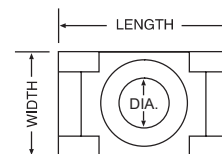


SCREW MOUNTS

A

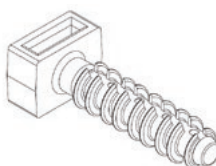
- **Secure Support** deep cradle design provides maximum support for larger bundles and tubing
- **Easy Insertion of Cable Ties** deep recessed screw hole allows cable ties to pass over screw head



Standard Screw Mounts Natural & Black

Part Number	Colour & Material	Height Inch/mm	Length Inch/mm	Width Inch/mm	Slot Height Inch/mm	Slot Width Inch/mm	Mount Method Inch/mm	Per Bag	Per Case
SMNY0019C	Natural Nylon	.280/7.11	.600/15.24	.385/9.77	.060/1.52	.200/5.08	#4-#6 Screw	100	1,000
SMNY0029C	Natural Nylon	.390/9.90	.875/22.22	.625/15.87	.090/2.29	.325/8.26	#12-1/4 Screw	100	1,000
SMNY0010C	Black Nylon	.280/7.11	.600/15.24	.385/9.77	.060/1.52	.200/5.08	#4-#6 Screw	100	1,000
SMNY0020C	Black Nylon	.390/9.90	.875/22.22	.625/15.87	.090/2.29	.325/8.26	#12-1/4 Screw	100	1,000
SMNY0019D	Natural Nylon	.280/7.11	.600/15.24	.385/9.77	.060/1.52	.200/5.08	#4-#6 Screw	500	1,000
SMNY0029D	Natural Nylon	.390/9.90	.875/22.22	.625/15.87	.090/2.29	.325/8.26	#12-1/4 Screw	500	1,000
SMNY0010D	Black Nylon	.280/7.11	.600/15.24	.385/9.77	.060/1.52	.200/5.08	#4-#6 Screw	500	1,000
SMNY0020D	Black Nylon	.390/9.90	.875/22.22	.625/15.87	.090/2.29	.325/8.26	#12-1/4 Screw	500	1,000

Tolerance: $\pm .03"/.76$ mm



Cable Ties Plug

- Material with Pure Nylon 6.6, UL 94V-2, Operation temp. -40°C~+85°C (-40°F ~+185°F)

Part no.	Diameter mm [Inch]	Length mm [Inch]	For Cable Ties width up to mm [inch]	Std. Pk. Qty.
MBP15000C	8.1 [.318]	38.1 [1.5]	7.6 [.300]	100
MBP17000C	10.6 [.417]	43.6 [1.7]	7.6 [.300]	100