

Job or Customer :	
Location :	
Engineer :	
<input type="checkbox"/> Complies with Spec <input type="checkbox"/> Alternate	Notes :
Contractor :	
HeatLink Rep :	
Submitted By :	Date :
Approved By :	Date :
P.O. Number :	Date :

Description

Solid brass fittings couples PEX tubing to PEX tubing.

Qty	PEX Size	NPT Size	Stk. #	Dimension				Weight
				A	B	C	D	
	1/2"	69005	2" (51 mm)	5/8" (15.5 mm)	1" (26 mm)	1 5/16" (24 mm)	0.29 lb 130 g	0.18 lb 80 g
	5/8"	69019	2" (51 mm)	1 1/16" (16.5 mm)	1 5/16" (33 mm)	1 3/16" (30 mm)	0.44 lb 200 g	0.3 lb 135 g
	3/4"	69022	2 1/8" (53 mm)	1 1/16" (16.5 mm)	1 7/16" (36 mm)	1 1/4" (32 mm)	0.51 lb 230 g	0.33 lb 150 g

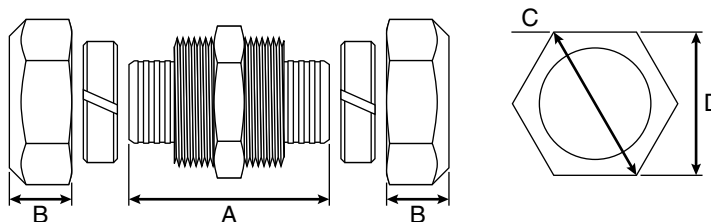
Technical Data

Specifications

Material	Brass (JIS C-3604)
Operating Temperature	180°F (82.2°C)
Operating Pressure	0.69 MPa / 100 psi

Standards / Listings

Manufactured to B137.5 & F-877



Installation

Installation must follow all of HeatLink's instructions and guidelines.

Related Documents

- HeatLink Limited Heating Warranty