

Job or Customer :	
Location :	
Engineer :	
<input type="checkbox"/> Complies with Spec <input type="checkbox"/> Alternate	Notes :
Contractor :	
HeatLink Rep :	
Submitted By :	Date :
Approved By :	Date :
P.O. Number :	Date :

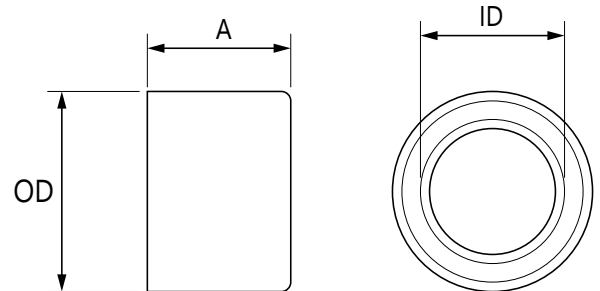
Description

PEX-a expansion rings with stop for use with PEX F1960 fittings.

The use of PEX tubing in a potable hot-water plumbing system with an operating temperature above 140°F (60°C) or system pressure above 80 psig (550 kPaG) or highly aggressive water quality or any combination thereof can significantly reduce the service life of the tubing.

HeatLink requires following the guidelines described in Plastics Pipe Institute TN-53, Guide to Chlorine Resistance Ratings of PEX Pipes and Tubing for Potable Water Applications and HeatLink INFO 37, Domestic Hot Water Recirculation Systems.

Qty	Stk. #	Size	Dimension, in/(mm)			Weight, lb/(kg)
			A	OD	ID	
	EX24205	1/2"	0.64 (16.3)	0.87 (22.1)	0.62 (15.7)	0.007 (0.003)
	EX24219	5/8"	0.77 (19.5)	1.00 (25.4)	0.76 (19.3)	0.009 (0.004)
	EX24222	3/4"	0.86 (21.8)	1.11 (28.2)	0.87 (22.1)	0.013 (0.006)
	EX24228	1"	1.11 (28.2)	1.41 (35.1)	1.13 (28.7)	0.022 (0.010)
	EX24235	1 1/4"	1.37 (34.8)	1.66 (42.2)	1.38 (35.1)	0.030 (0.014)
	EX24241	1 1/2"	1.62 (41.1)	1.94 (49.3)	1.65 (41.9)	0.040 (0.018)
	EX24250	2"	2.00 (50.8)	2.65 (67.3)	2.15 (54.6)	0.120 (0.054)



Technical Data

Specifications

Material	Crosslinked Polyethylene (PEX-a)
Maximum Temperature	200°F (93.3°C)

Codes

IMC	
IPC	
IRC	
NPC of Canada	
NSPC	
UMC	
UPC	

Listings

ICC-ES PMG 1087
cNSFus-pw
cQAlus P371

Standards

ASTM E84
ASTM F877
ASTM F1960
CSA B137.5
NSF/ANSI 14
ULC S102.2
ANSI/CAN/UL 1821 (excl. 5/8")

Installation

Installation must follow all of HeatLink's instructions and guidelines.

Related Documents

- F1960 PEX-a Potable Water Expansion System Installation Guide (L3240)
- HeatLink Limited Plumbing Warranty