



BF1980

Floormount tub filler with handshower (with rough-in)

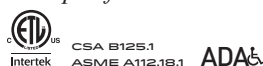
SPECIFICATIONS

- Solid brass construction
- Male water inlets 1/2NPT
- Ceramic disc cartridge
- Flexible 60" hose
- Laminar and hidden stream
- Integral check valves
- Integrated diverter

- Chrome: BF1980-110
- Matte black: BF1980-160
- Pure nickel PVD: BF1980-125

- 26 L/min (6.9 gpm) at 60 psi

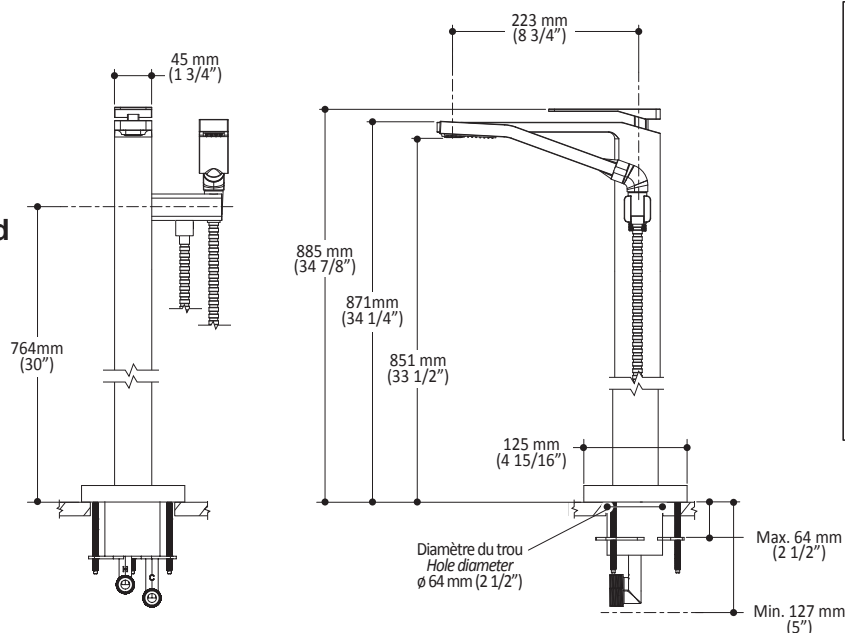
The specified model meets or exceeds the following standards:



This product must be installed following the installation instructions provided.

Kalia Inc. guarantees all aspects of its products to be free of defects in material and workmanship for normal residential use. **Refer to the warranty included with the Kalia products for details.**

105162 included



Top view

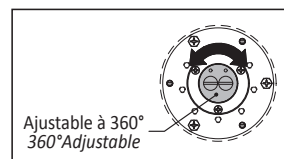
hot cold

BATH

hot cold

HANDSHOWER

FERME / OFF



Important: Dimensions are approximated and are subject to changes. Please refer to the installation instructions.



1355, 2^e Rue du Parc industriel
Sainte-Marie (Québec)
Canada G6E 1G9

T 418-387-9090
1-877-GO-KALIA (1-877-465-2542)
F 418 387-9089

kaliastyle.com