

# INSTALLATION GUIDE

## CHAPPELLE

### General Information

Please check the condition & that all parts are included with your new shower doors. Any issues must be reported right away. Delaying this might affect the warranty of the item.

**Warning:** *handle glass with care. It cannot be re-worked.*

**Aftercare:** clean regularly with soap & water; especially in areas with hard water. Avoid contact with strong chemicals such as organic solvents or strippers.

**Warning:** *two adults may be required to install shower doors.*

### Recommended Tools



Electric Drill



Drillbits



Tape Measure



Silicone Gun



Leveler



Pencil

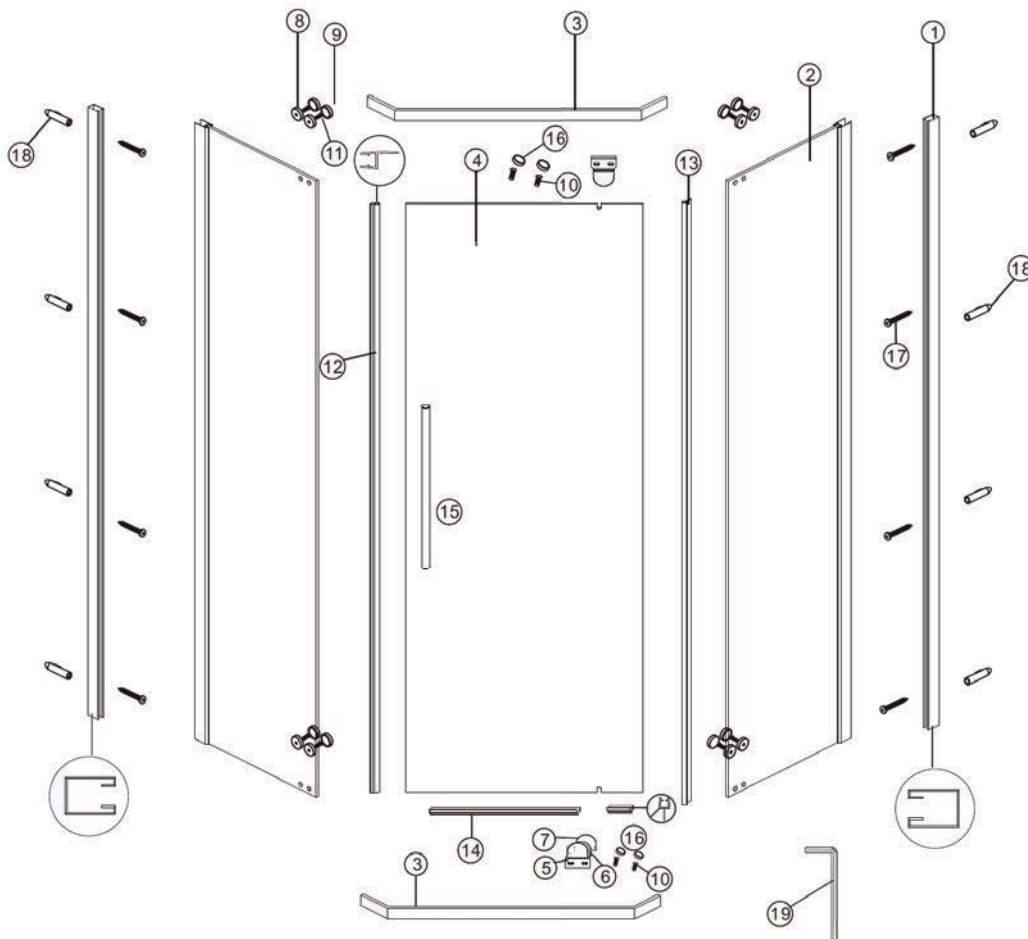


Flat/Cross  
Screwdrivers



Hammer

### Assembly Drawing



Item No.	Description	QTY
1	Wall Posts	2
2	Fixed Side Panels	2
3	Rails	2
4	Door Panel	1
5	Hinge Mounting Blocks	2
6	Hinges	2
7	Hinge caps	4
8	Rail Cap Bases	8
9	Rail Caps	8
10	Screws M6x16mm	4
11	Screws M6x20mm	8
12	Splash Guard	1
13	Magnetic Seals	2
14	Drip Seal	1
15	Handle Set	1
16	Hinge Mounting Block Caps	4
17	Screws M4x35mm	8
18	Wall plugs	8
19	Allen Wrench	1

**Disclaimer:** *please hire a specialist if you feel you are unable to install yourself. Teago cannot be held liable for a faulty install or damage done by it.*



Massachusetts Code: Approved



10-Year  
Warranty

**teago.ca**



## INSTALLATION GUIDE

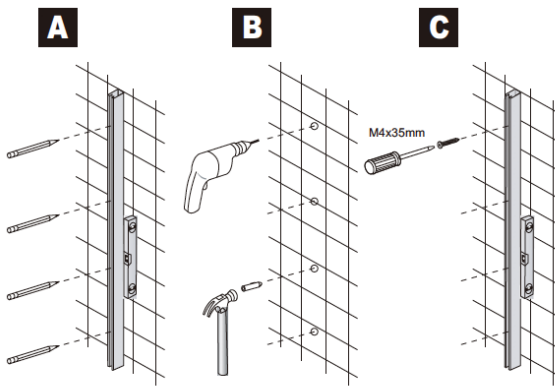
### CHAPPELLE

Install Steps (Page 1)

#### Step 1

**A**

Using a level ensure jambs (1) are plumb then mark the outside edge with a pencil. Then mark your screw holes that are on the inside of the jamb.



**B**

Remove jambs and drill 6mm holes with drill bit. Insert plastic wall plugs (18) that are provided.

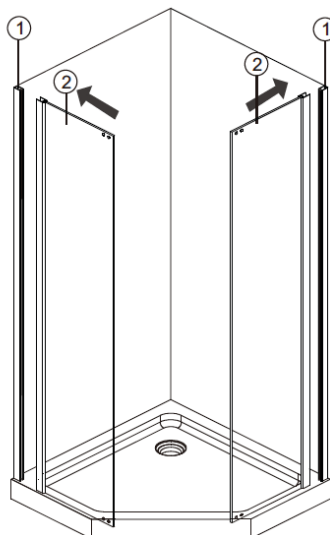
Note: Please use the right fixing for the surface you are screwing into, to ensure the jamb is securely fixed to the wall.

**C**

Using a level ensure jambs (1) are plumb and the holes in the jamb line up with the holes in the wall. Fix jamb to wall using the screws provided (17).

#### Step 2

**D**



**D**

Slide fixed panel (2) over wall jambs (1)

Hint: Insert top or bottom corner first then you will find that the rest of the panel will slide in easily.



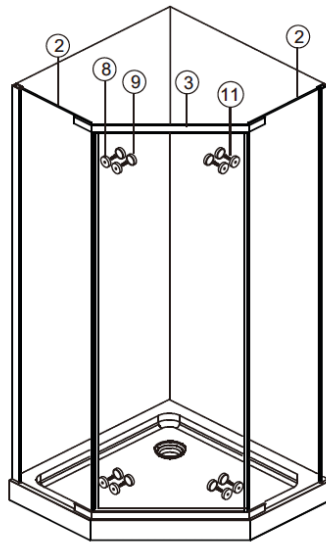
## INSTALLATION GUIDE

### CHAPPELLE

Install Steps (Page 2)

#### Step 3

**E**



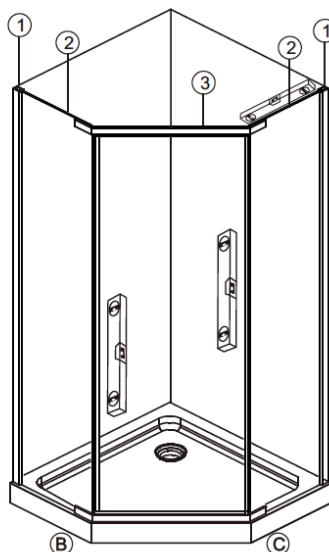
**E**

Connect top and bottom rails (3) to fixed panels (2). Ensure rail cap bases (8) are placed on the glass before using rail fixing screws (11). Cap off with rail caps (9). Do not over tighten as this may damage rail cap bases (8).

Hint: Use a small amount of silicone on the cap to seal the cap to the cap base. Do this last when sealing the shower

#### Step 4

**F**



**F**

Adjust fixed panel (2) in or out of the wall jambs (1) so that the top rail (3) is horizontal and the whole screen sits square on the shower base/ shower area. (Bmm = Cmm)

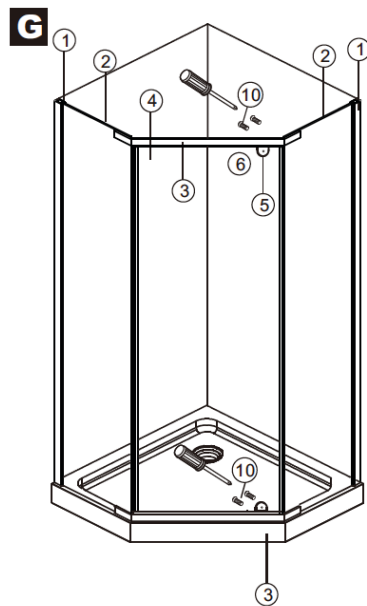
Also make sure both fixed panels (2) sit vertical.

# INSTALLATION GUIDE

## CHAPPELLE

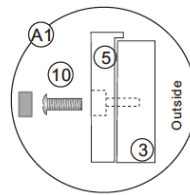
Install Steps (Page 3)

### Step 5



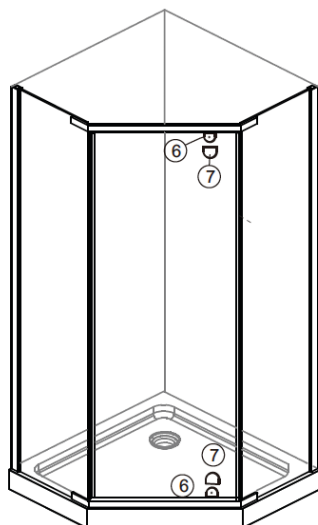
**G**

Attach the bottom hinge mounting block (5) to the bottom rail (3) using the screws provided (10). Make sure the mounting block is facing the right way See A1. Make sure the mounting block is in the middle of its adjustment range. Place the bottom door hinge (6) which is already attached to the door into the bottom mounting block (5). Try to keep the door (4) as vertical as possible to prevent damage. Slide the second mounting block (5) onto the top hinge (6). Make sure that the mounting block is facing the right way See A1. Screw mounting block (5) to the top rail (3) using the screws provided (10). Adjustment to the door (4) is made by loosening the screws (10) and sliding the hinge mounting block (5) along the rail. Adjust door panel so that there is an equal gap between the fixed panels (2) and the door. Also make sure the top rail (3) and the top of the door (4) have an equal gap. Now tighten the hinge mounting blocks.



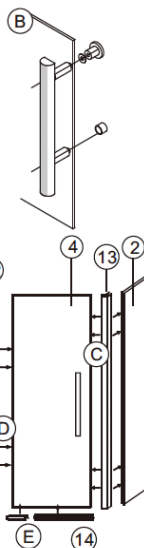
### Step 6

**H**



**H**

Slide hinge caps (7) over both hinges (6).  
Hint: Place a small amount of silicone under each cap before installing to ensure cap remain in position permanently This can be done last when sealing the outside of the shower.



**B** Attach handle to door as shown, Make sure that on the inside of the door the clear washers are next to the glass. See step over the page for assembly instructions.

**C** Push the magnetic seals (13) onto the door panel (4) and the fixed side panel (2).

**D** Push the splash guard (12) onto the door panel (4) Note that the flap is on the inside.

**E** Push the drip seal (14) onto the bottom of the door panel (4). Note that the top flap is to the inside.

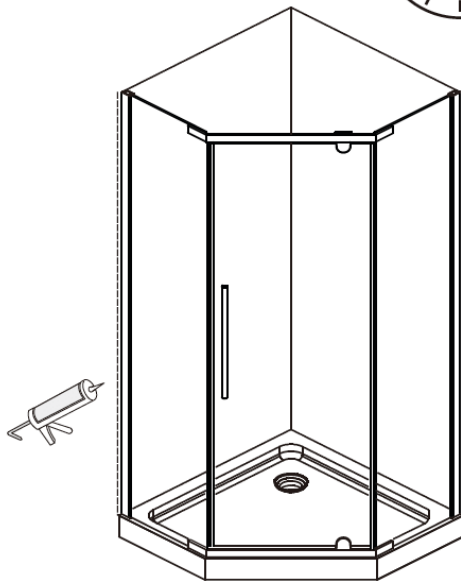


## INSTALLATION GUIDE

### CHAPPELLE

Install Steps (Page 4)

#### Step 7



Apply silicone sealer around all external joints of shower screen and allow 24 hours for silicone to set.

Silicone is not used on the inside of the shower screen because in time water can build up within the wall jamb and made the screen leak out of the shower area. The screens are designed to allow the water to return into the shower area if any is present. Screens that are sealed on the inside, will void warranty.



Massachusetts Code: Approved



10-Year  
Warranty