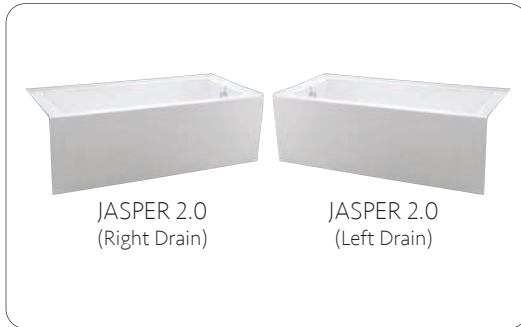


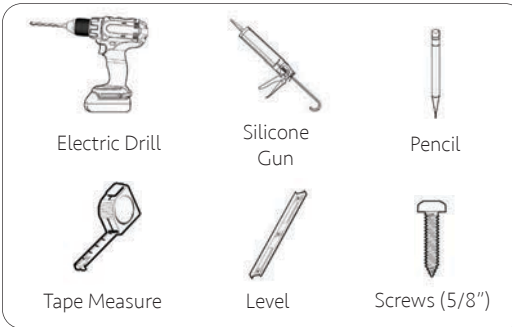
INSTALLATION GUIDE

JASPER 2.0 TUBS

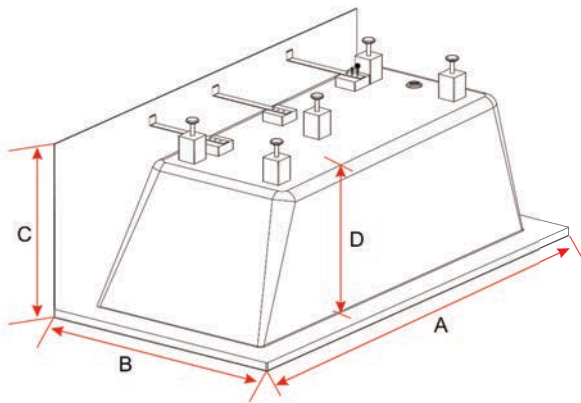
Applicable Models



Recommended Tools



SPECIFICATIONS

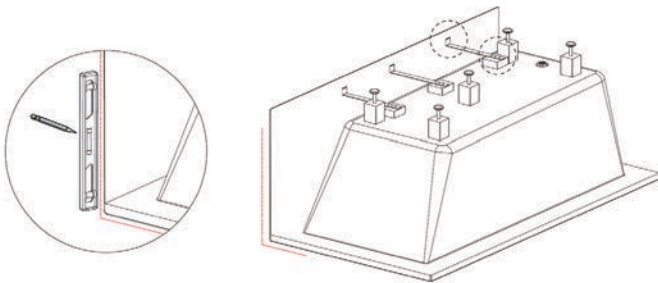


MODEL	DIMENSIONS*			
	A	B	C	D
JASPER 2.0 R	60" (1524mm)	32" (812mm)	22" (560mm)	17 3/8 (440mm)
JASPER 2.0 L	60" (1524mm)	32" (812mm)	22" (560mm)	17 3/8 (440mm)

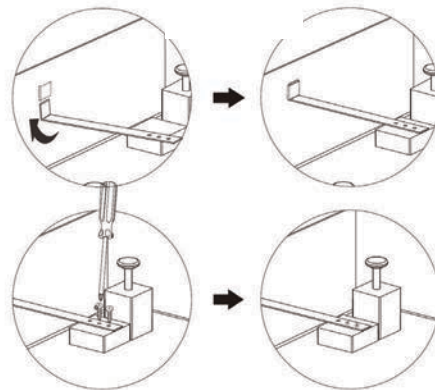
* Tolerance on dimensions: $\pm 0.25"$ (6mm)

INSTALL STEPS

- Place the tub on the mat mounted upside down. Then install the iron support using the level to make sure the apron is vertical to the ground.



- Insert the supporting cast iron bar as pictured below. Then, using two screws to fix the iron support onto the solid wood.

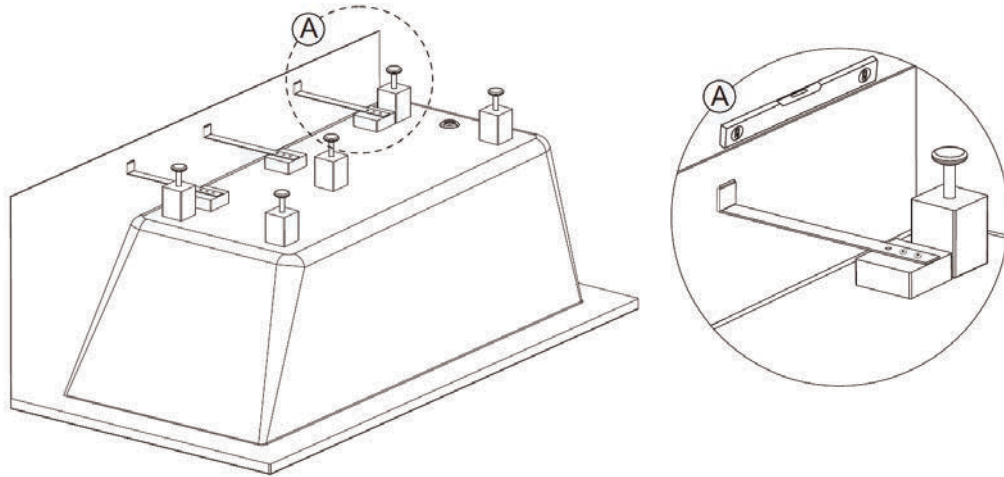


Disclaimer: please hire a specialist if you feel you are unable to install yourself. Teago cannot be held liable for a faulty install or damage done by it.

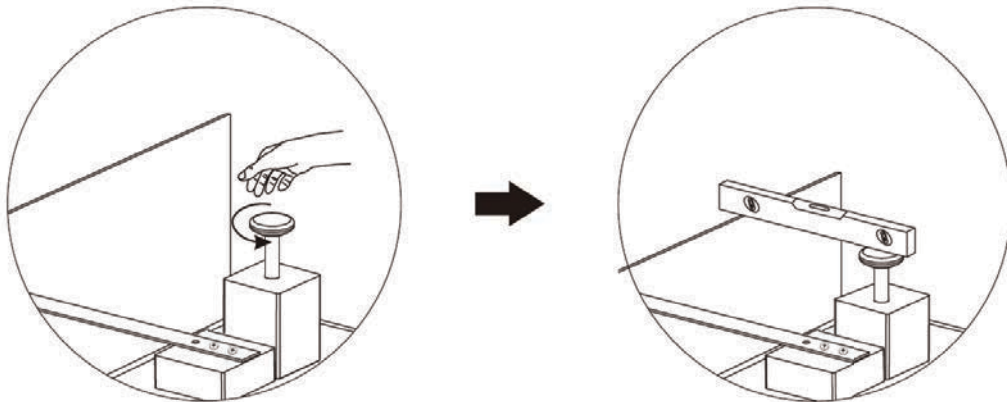
INSTALLATION GUIDE

JASPER 2.0 TUBS

- 3 After the installation of the first flat iron, complete the second one. Before installation, make the skirt panel vertical to the ground, with the method shown in Step 1, while at the same time, make sure the skirt panel is flat surface, with the method used in Step 2. Then, begin the installation for the iron support, as in Step 1.



- 4 Ensure the apron is fixed firmly with the bathtub's bottom, then adjust the feet to make bathtub level to finish the installation. **Note:** If you use the preleveled feet, this step is not necessary.



MAINTENANCE

The acrylic sheets, which forms the surface of your bathtub, provides one of the most durable surfaces found in modern bathrooms. Keep it bright and smooth with mild liquid household detergent, soap and water, or foaming cleansers. NEVER USE aromatic solvents, abrasive cleaners, scouring compounds or pads, strong liquid cleansers, or other material that could damage or dull the surface of the bath. Restore surface gloss by applying a very fine rubbing compound and polishing the surface by hand or with a power buffer. Finish with an application of good quality automotive wax and cloth.

Note: Please note these are only general installation guidelines. Steps may vary from time to time depending on the circumstances. Do not hesitate to contact us if you require any further information. Our contact info can be found at teago.ca.