

# INSTALLATION GUIDE

## RIVERBEND

### General Information

Please check the condition & that all parts are included with your new shower doors. Any issues must be reported right away. Delaying this might affect the warranty of the item.

**Warning:** *handle glass with care. It cannot be re-worked.*

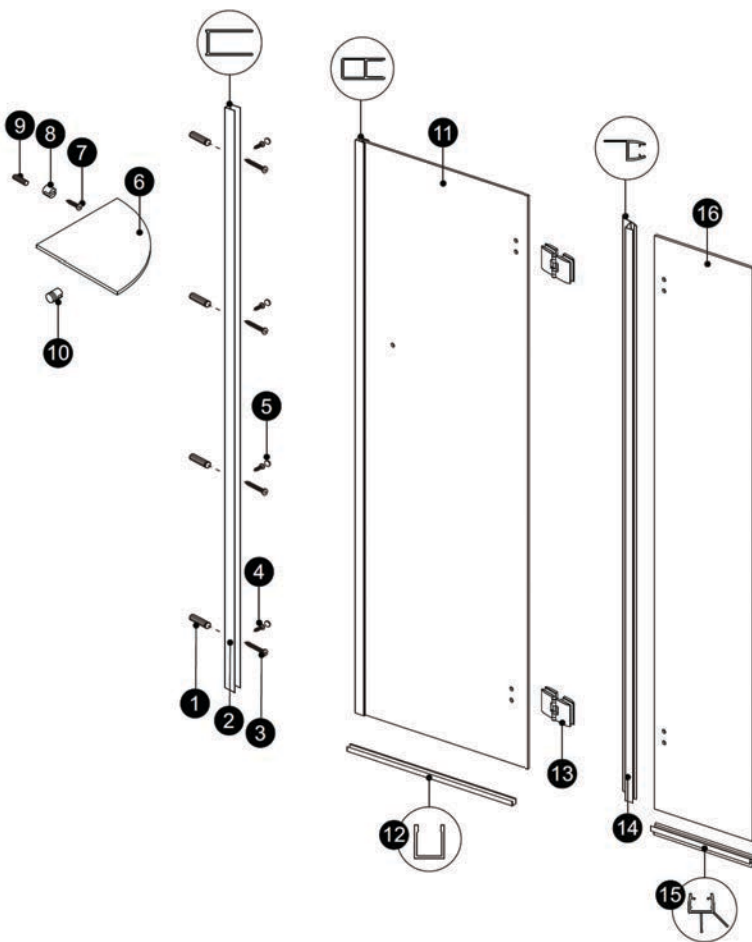
**Aftercare:** clean regularly with soap & water; especially in areas with hard water. Avoid contact with strong chemicals such as organic solvents or strippers.

**Warning:** *two adults may be required to install shower doors.*

### Recommended Tools



### Assembly Drawing



| PART # | DESCRIPTION                | Q'TY |
|--------|----------------------------|------|
| 1      | Wall Plugs-A               | 4pcs |
| 2      | Wall Jamb                  | 1pc  |
| 3      | Screws ST4x1 3/8"          | 4pcs |
| 4      | Screws ST4x5/16"           | 4pcs |
| 5      | Screw Caps                 | 4pcs |
| 6      | Glass Shelf                | 1pc  |
| 7      | Screws ST4x1"              | 1pc  |
| 8      | Shelf Bracket-A            | 1pc  |
| 9      | Wall Plugs-B               | 1pc  |
| 10     | Shelf Bracket-B            | 1pc  |
| 11     | Fixed Panel                | 1pc  |
| 12     | Aluminium Bottom U Channel | 1pc  |
| 13     | Hinge                      | 2pcs |
| 14     | Door Panel Gasket          | 1pc  |
| 15     | Bottom Door Gasket         | 1pc  |
| 16     | Door Panel                 | 1pc  |

**Disclaimer:** *please hire a specialist if you feel you are unable to install yourself. Teago cannot be held liable for a faulty install or damage done by it.*

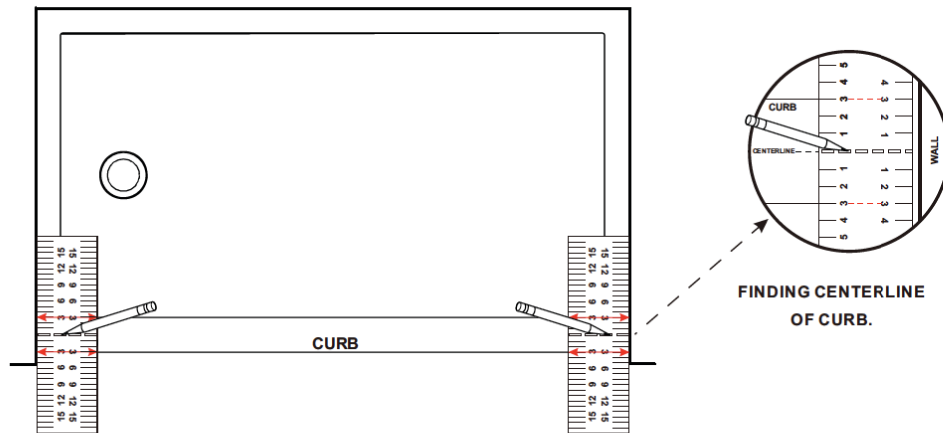


# INSTALLATION GUIDE

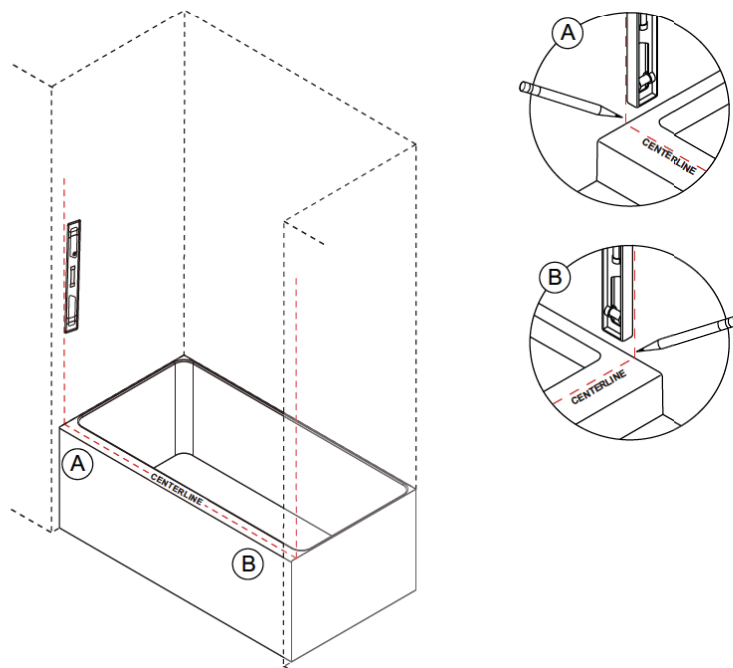
## RIVERBEND

Install Steps (Page 1)

### Step 1



### Step 2



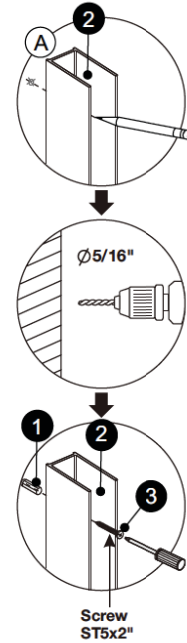
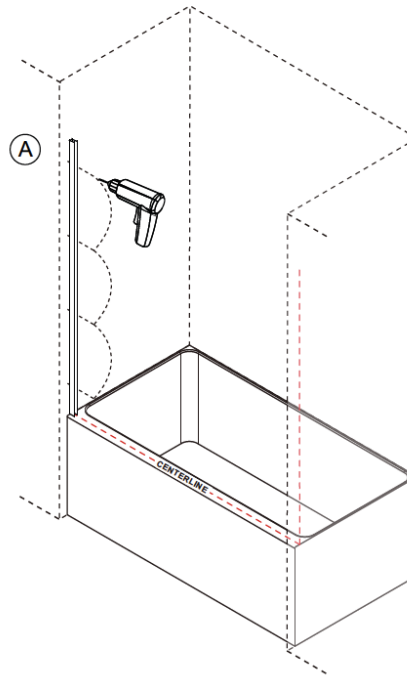


## INSTALLATION GUIDE

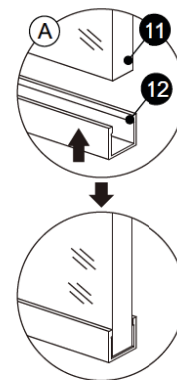
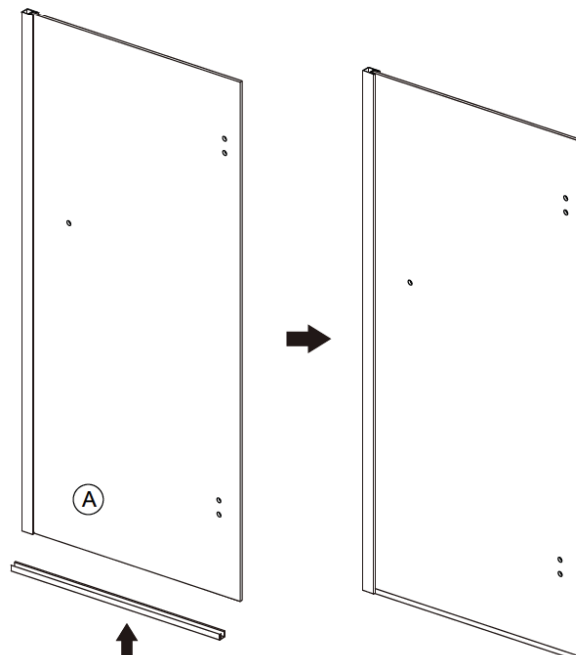
### RIVERBEND

Install Steps (Page 2)

#### Step 3



#### Step 4



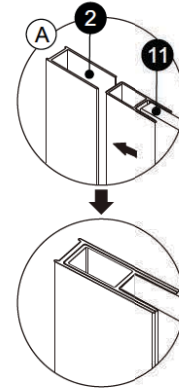
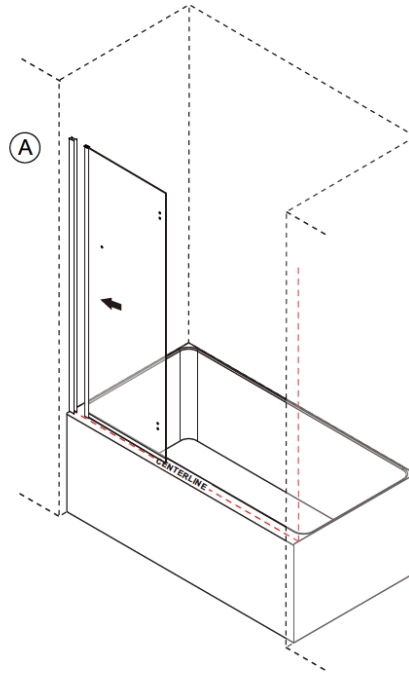


## INSTALLATION GUIDE

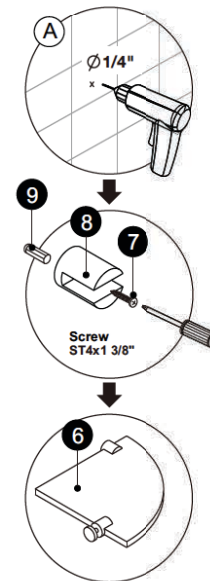
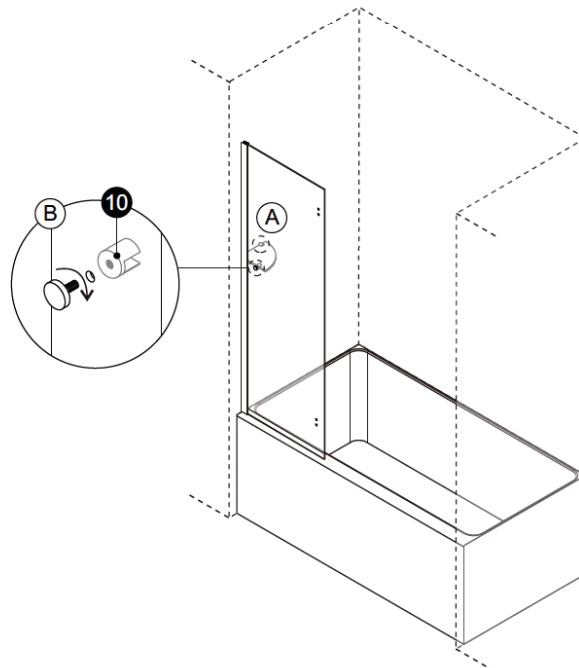
### RIVERBEND

Install Steps (Page 3)

#### Step 5



#### Step 6



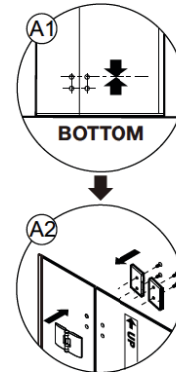
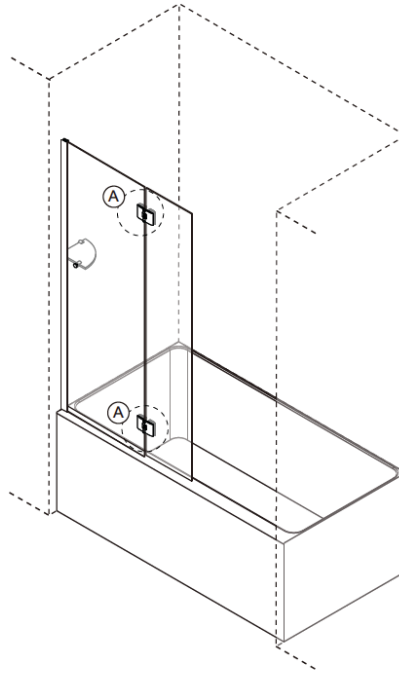


## INSTALLATION GUIDE

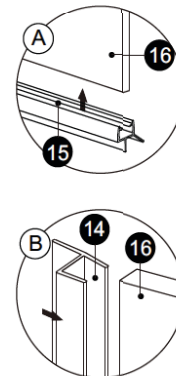
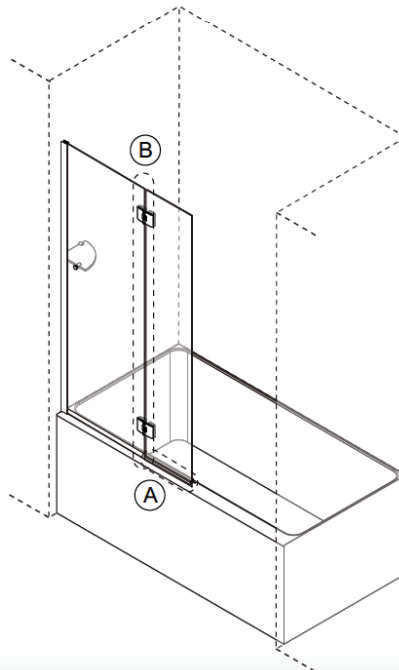
### RIVERBEND

Install Steps (Page 4)

#### Step 7



#### Step 8



View from outside

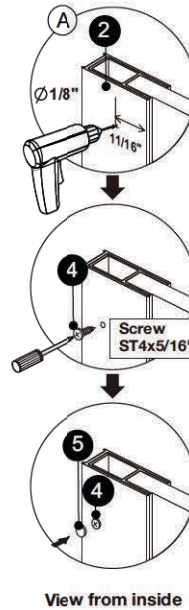
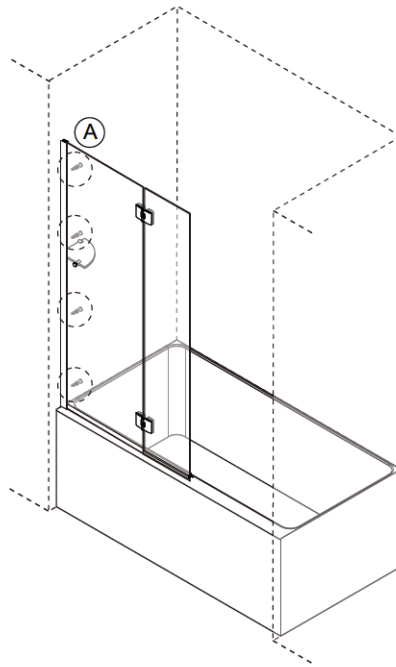


## INSTALLATION GUIDE

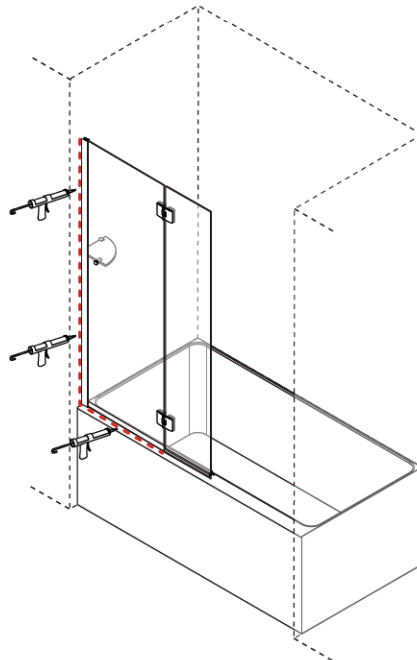
### RIVERBEND

Install Steps (Page 5)

#### Step 9



#### Step 10

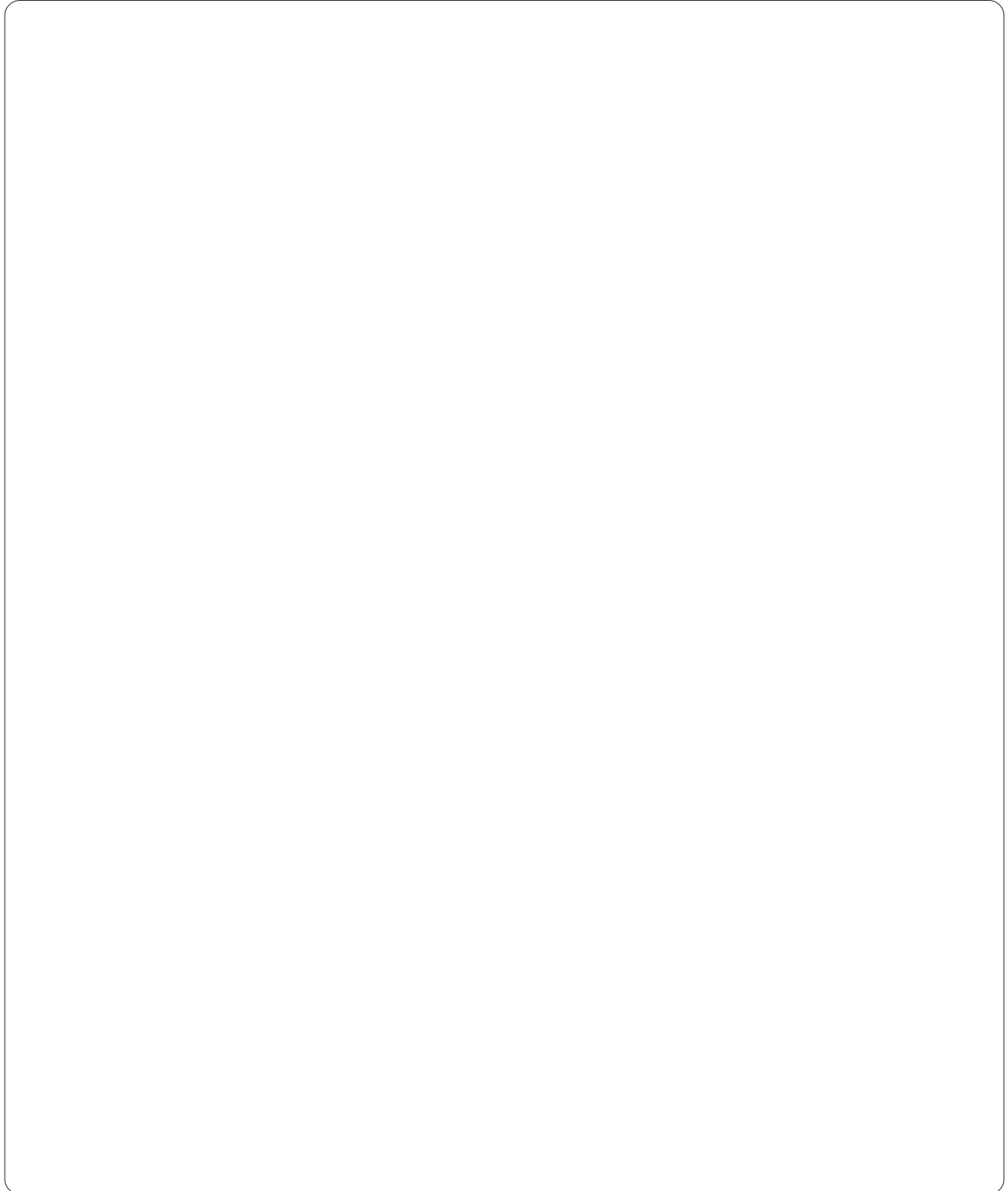


**24 HOURS**  
Allow 24 hours for silicone to dry before use.

# INSTALLATION GUIDE

## RIVERBEND

Install Steps (Page 6)



Massachusetts Code: Approved



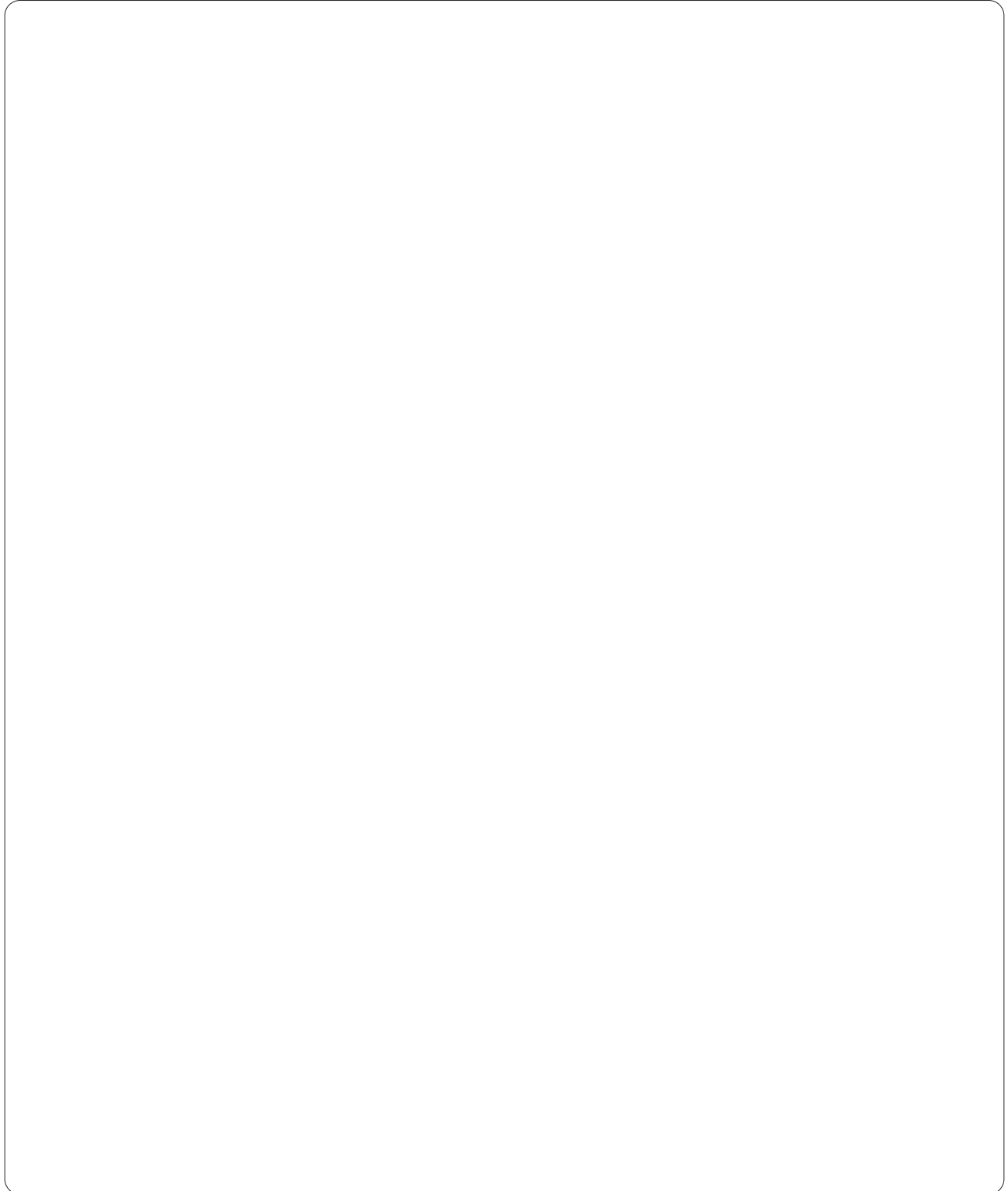
10-Year  
Warranty

**teago.ca**

# INSTALLATION GUIDE

## RIVERBEND

Install Steps (Page 7)



Massachusetts Code: Approved



10-Year  
Warranty

**teago.ca**