

INSTALLATION GUIDE

SECORD 2.0

General Information

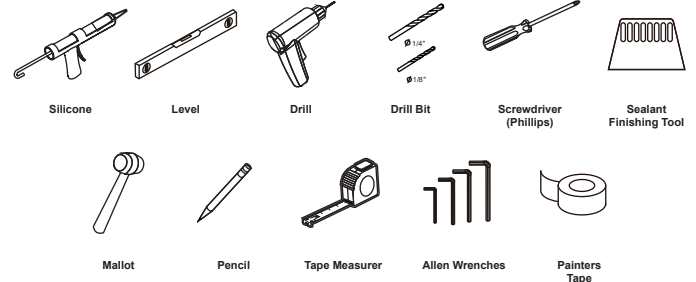
Please check the condition & that all parts are included with your new shower doors. Any issues must be reported right away. Delaying this might affect the warranty of the item.

Warning: handle glass with care. It cannot be re-worked.

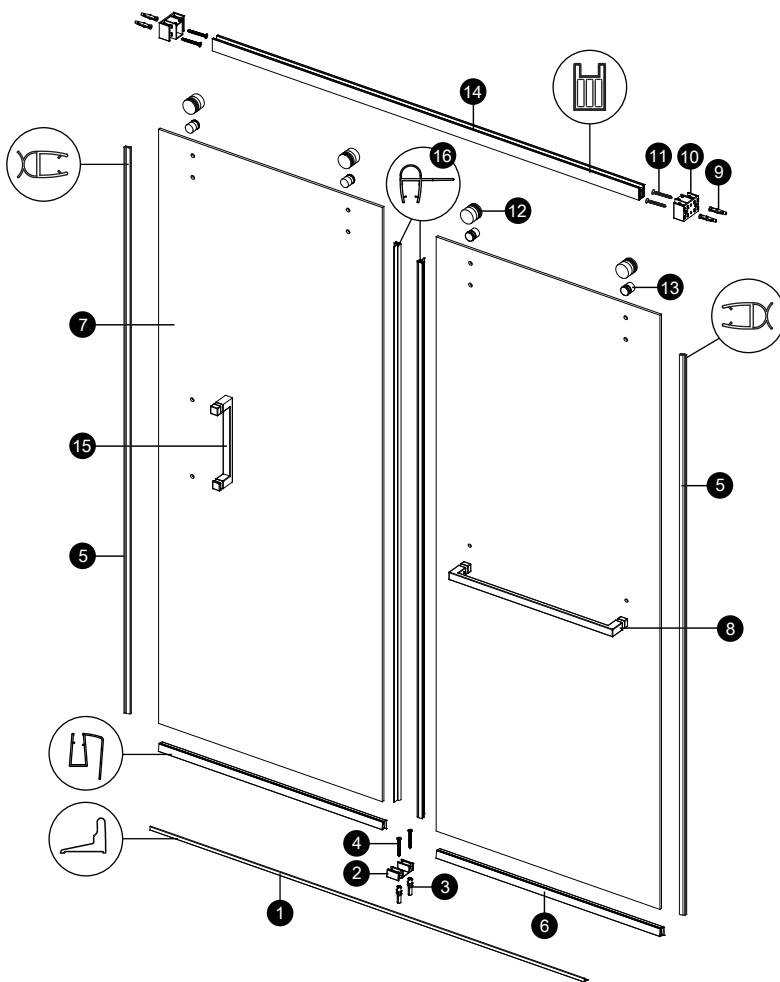
Aftercare: clean regularly with soap & water; especially in areas with hard water. Avoid contact with strong chemicals such as organic solvents or strippers.

Warning: two adults may be required to install shower doors.

Recommended Tools



Assembly Drawing



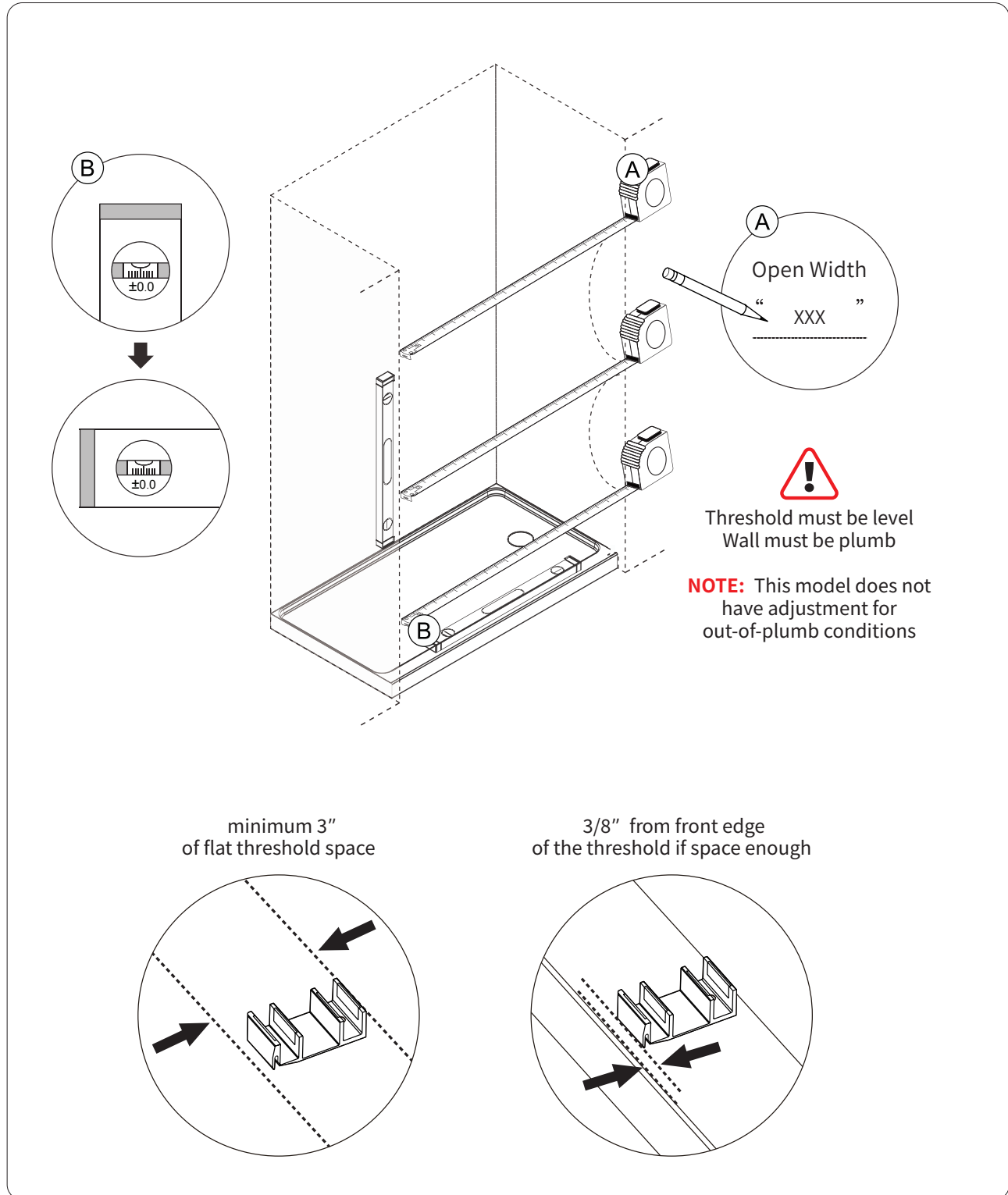
PART #	DESCRIPTION	Q'TY
1	Aluminum Threshold	1pc
2	Bottom Guide	1pc
3	Wall Plugs-A	2pcs
4	Screws ST4x1 3/8"	2pcs
5	Door bubble Gasket	2pcs
6	Bottom Door Gasket	2pcs
7	Door Panels	2pcs
8	Towel Bar	1pc
9	Wall Plugs-B	4pcs
10	Wall Brackets	2pcs
11	Screws ST5x2"	4pcs
12	Rollers	4pcs
13	Anti-Lift Pins	4pcs
14	Rail	1pc
15	Handle	1pc
16	F waterproof Gasket	2pcs

Disclaimer: please hire a specialist if you feel you are unable to install yourself. Teago cannot be held liable for a faulty install or damage done by it.

INSTALLATION GUIDE

SECORD 2.0

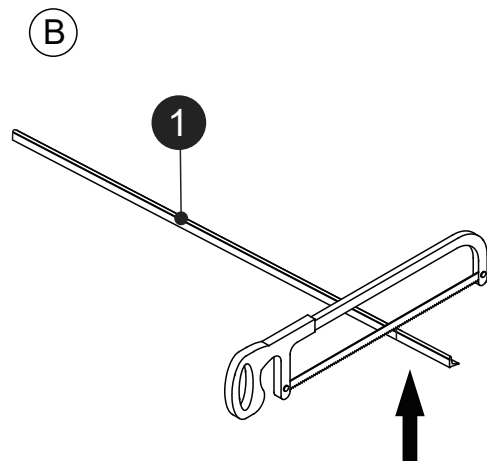
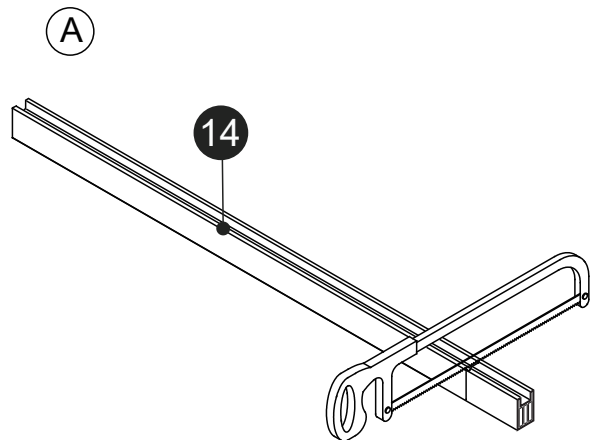
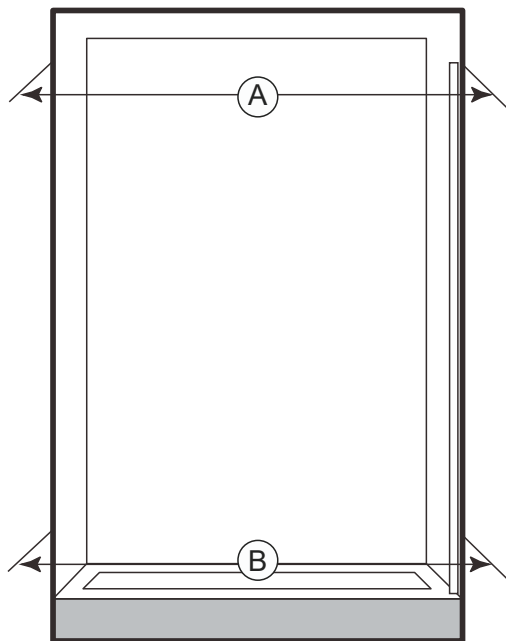
Install Steps (Page 1)



INSTALLATION GUIDE

SECORD 2.0

Install Steps (Page 2)



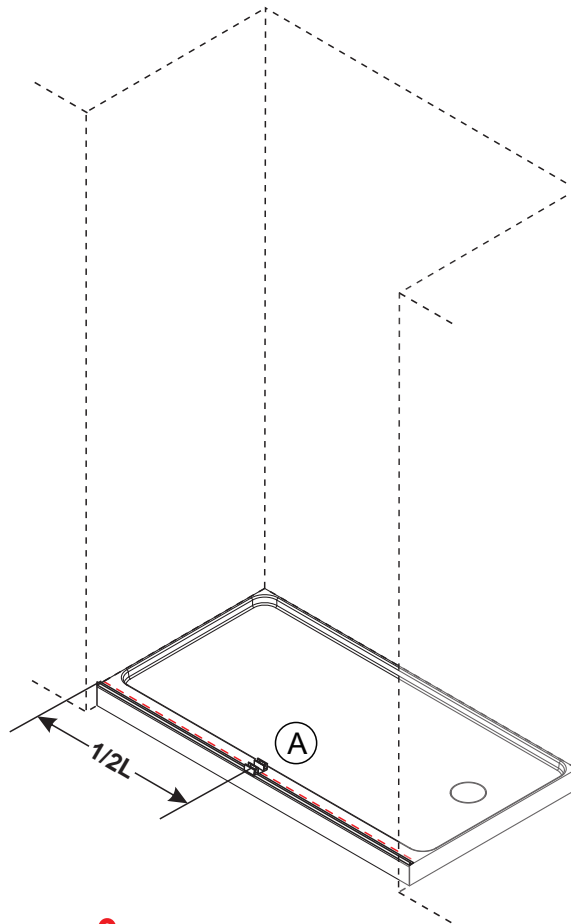
Measure the bottom threshold / top rail with a tape measure. Cut the length according to installer's recommendation.



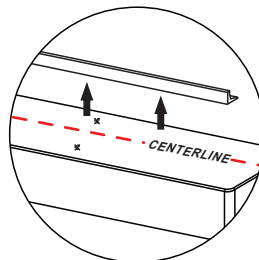
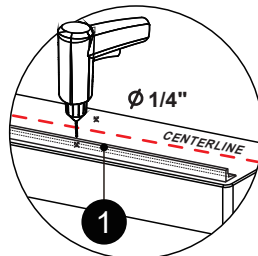
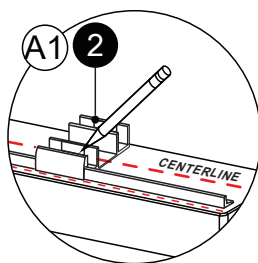
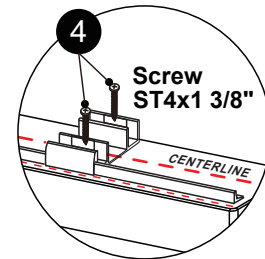
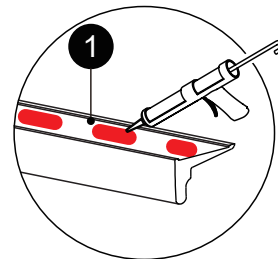
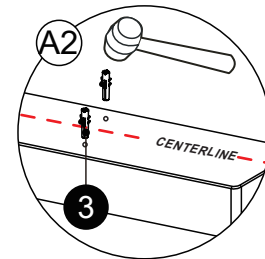
INSTALLATION GUIDE

SECORD 2.0

Install Steps (Page 3)



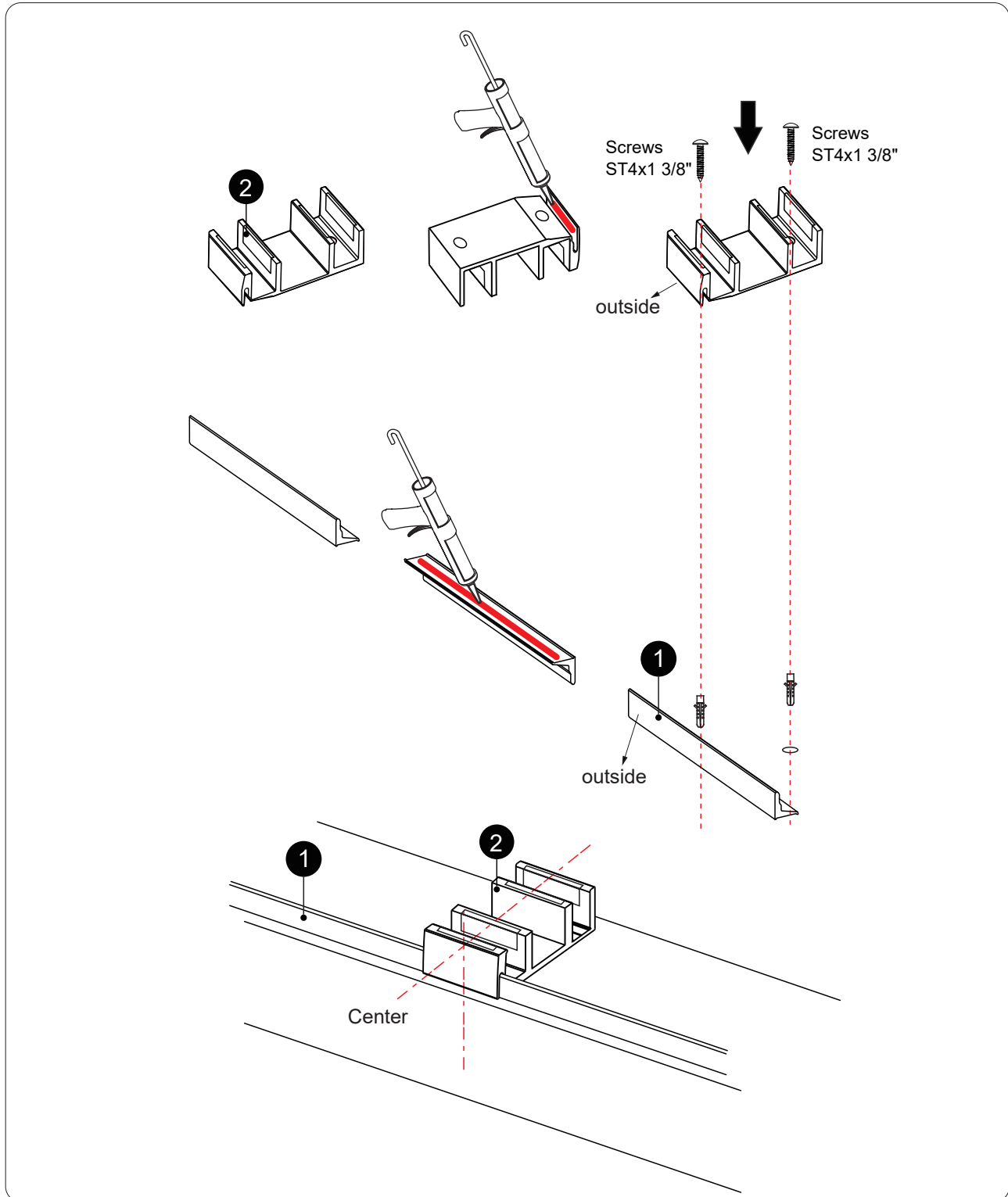
Center the bottom guide and drill screw hole on it.



INSTALLATION GUIDE

SECORD 2.0

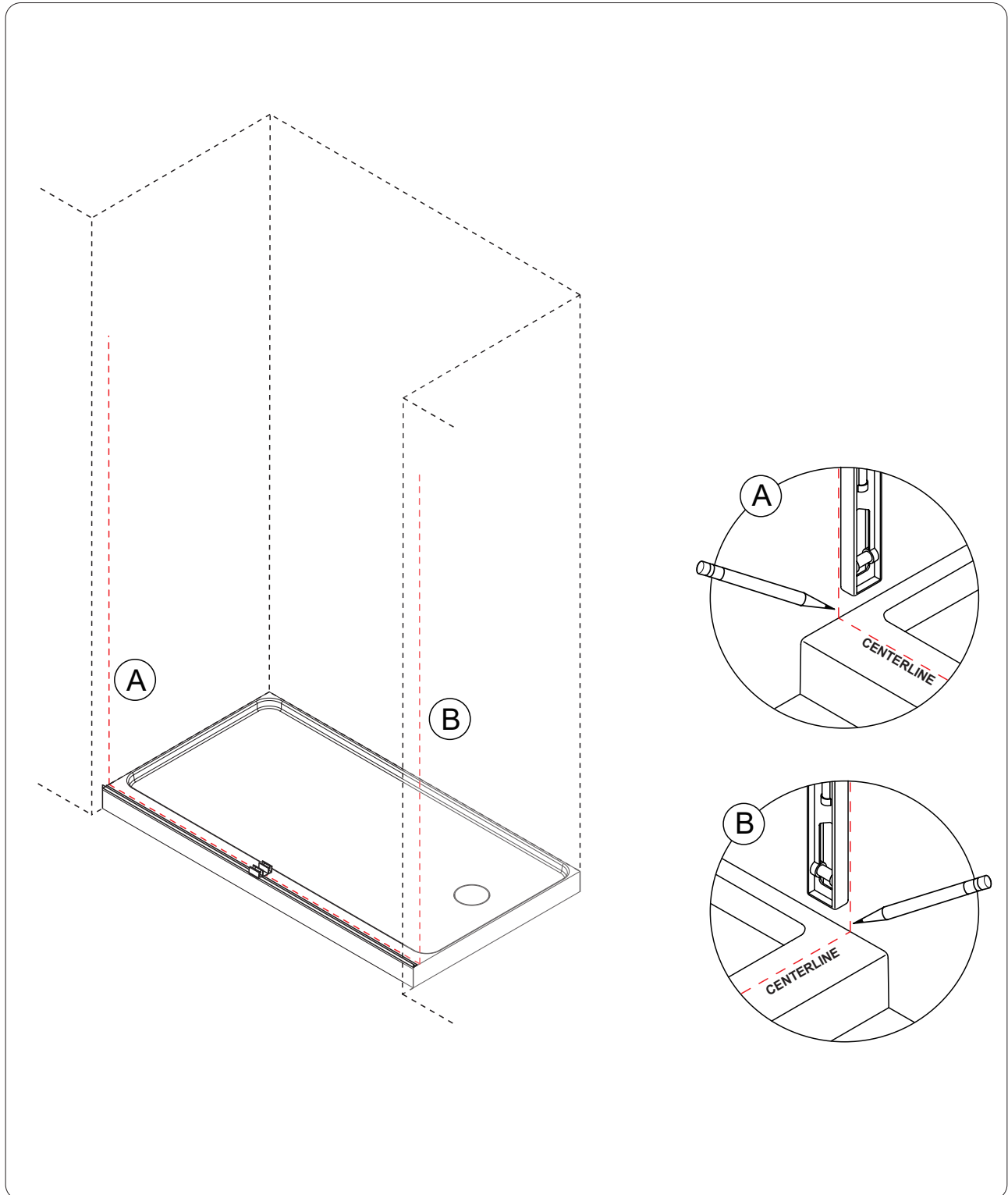
Install Steps (Page 4)



INSTALLATION GUIDE

SECORD 2.0

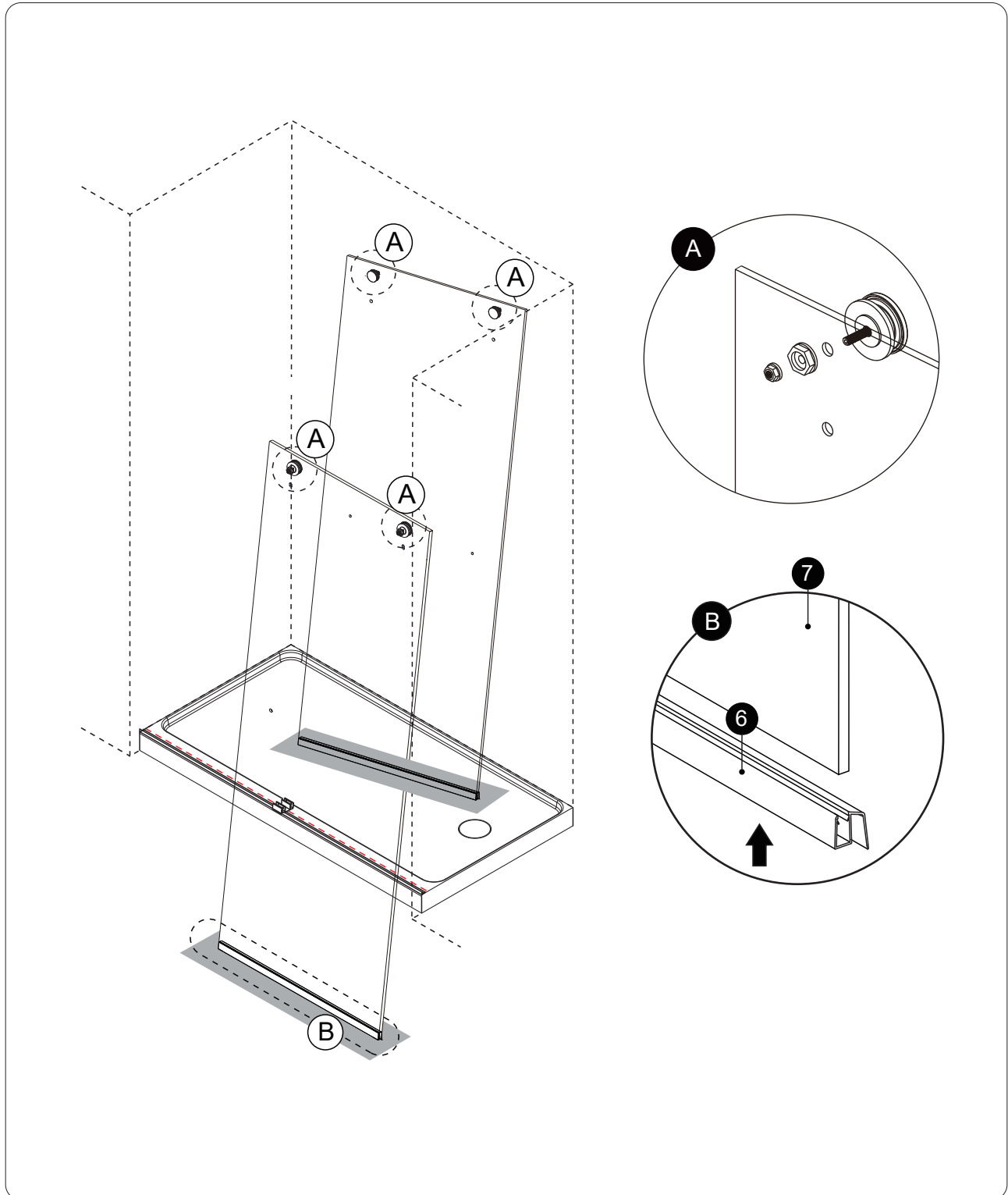
Install Steps (Page 5)



INSTALLATION GUIDE

SECORD 2.0

Install Steps (Page 6)



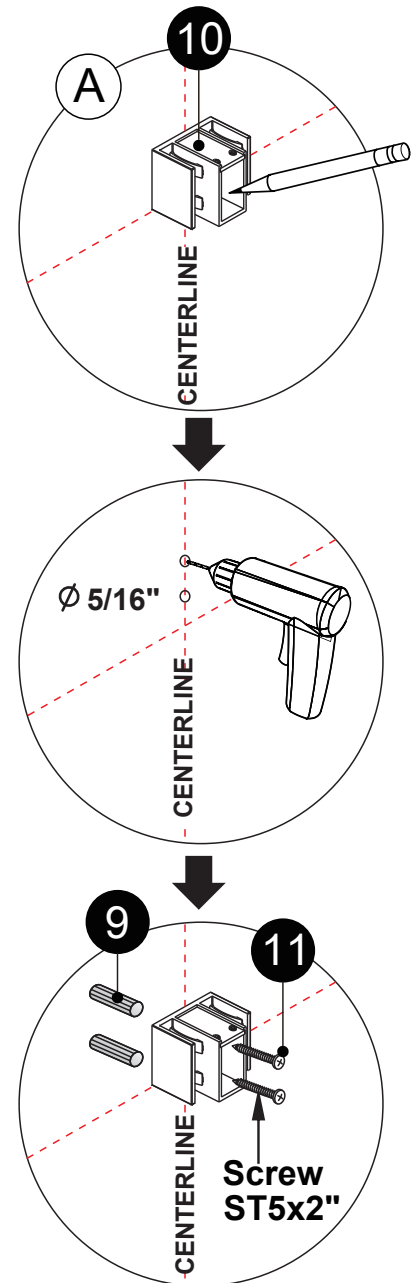
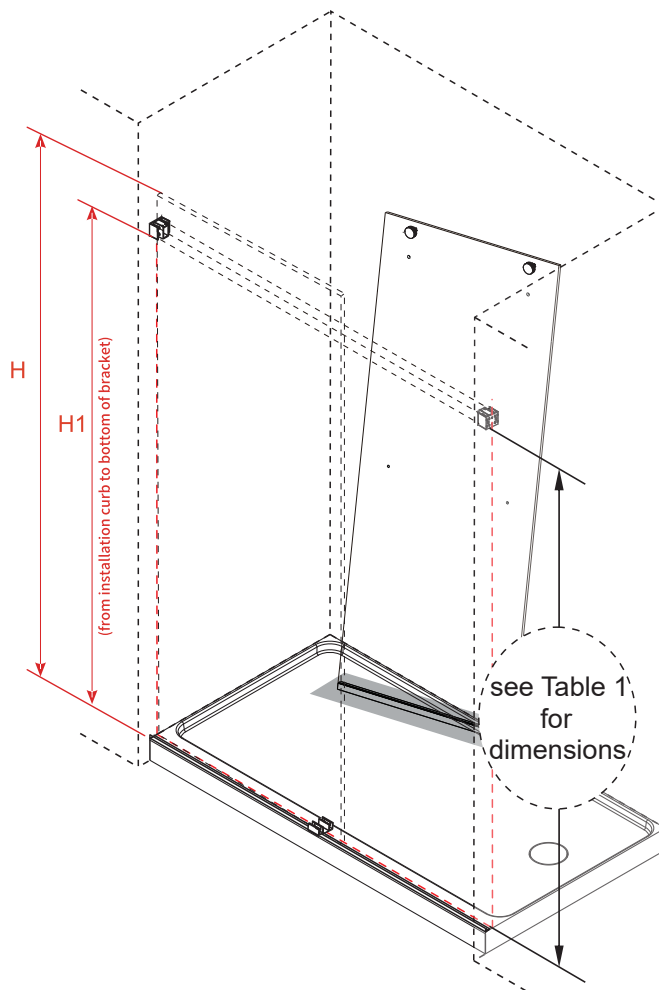
INSTALLATION GUIDE

SECORD 2.0

Install Steps (Page 7)

Table

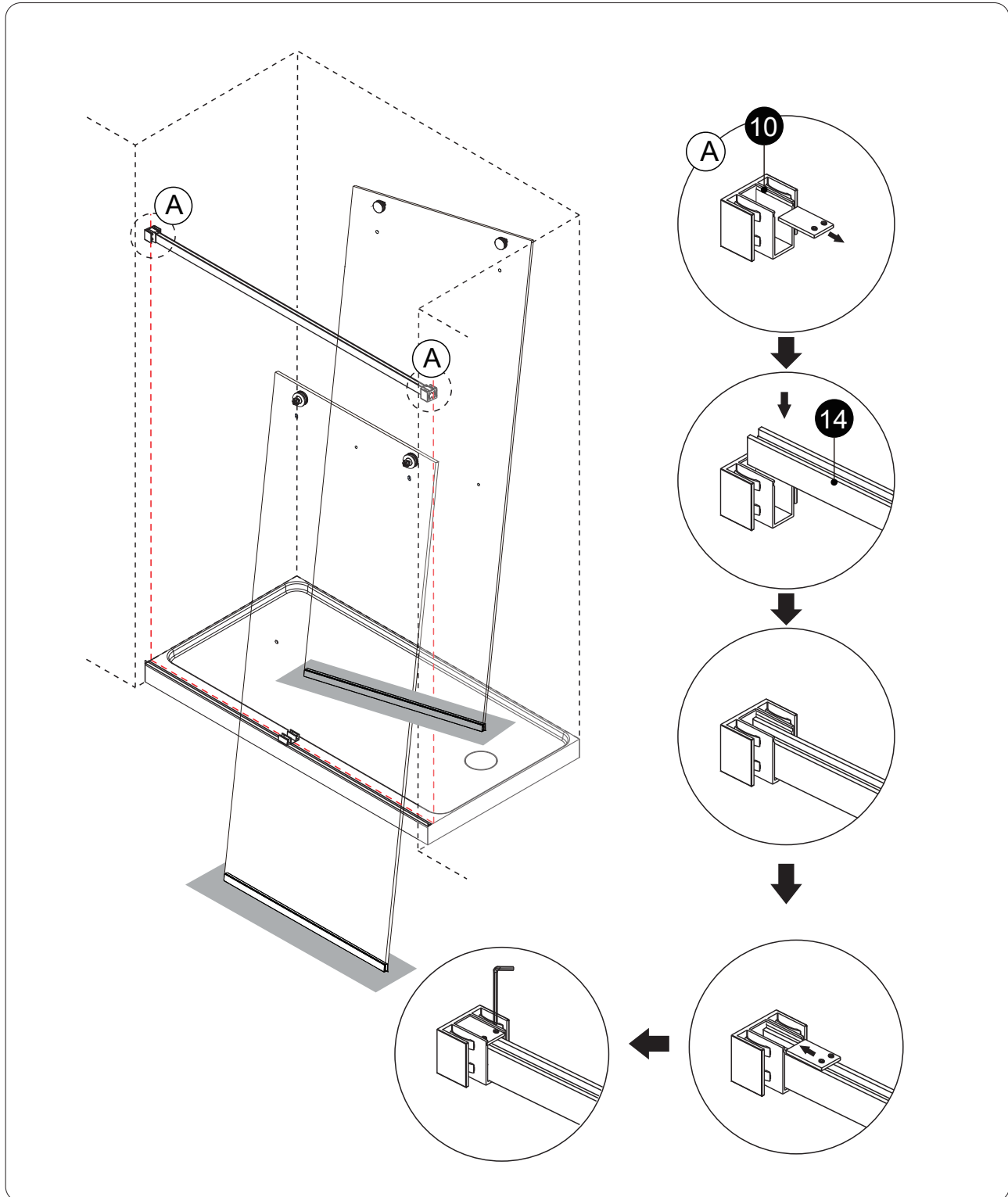
Shower Height	Wall Bracket Location (from installation curb to bottom of bracket)
H	$H1 = H - 4 \frac{3}{16}"$



INSTALLATION GUIDE

SECORD 2.0

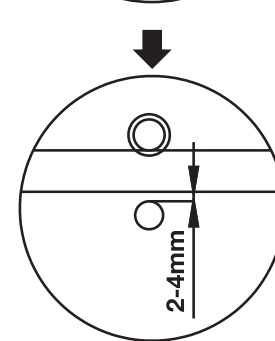
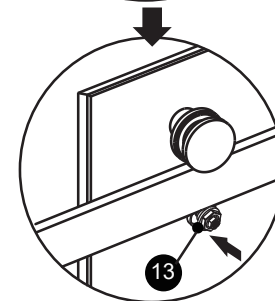
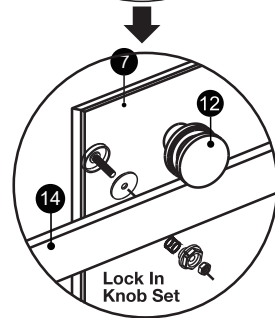
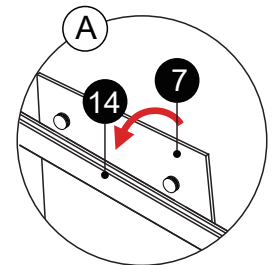
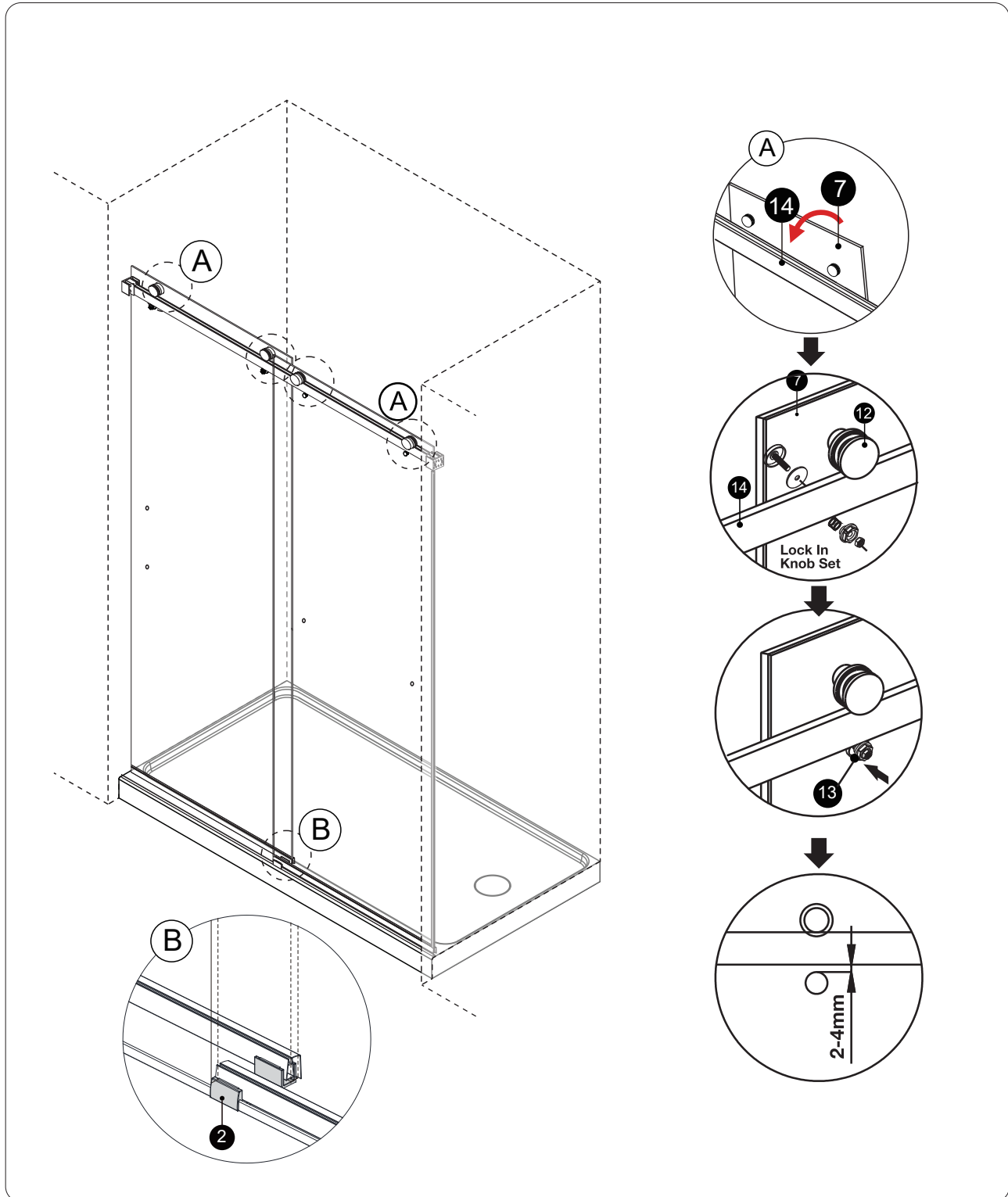
Install Steps (Page 8)



INSTALLATION GUIDE

SECORD 2.0

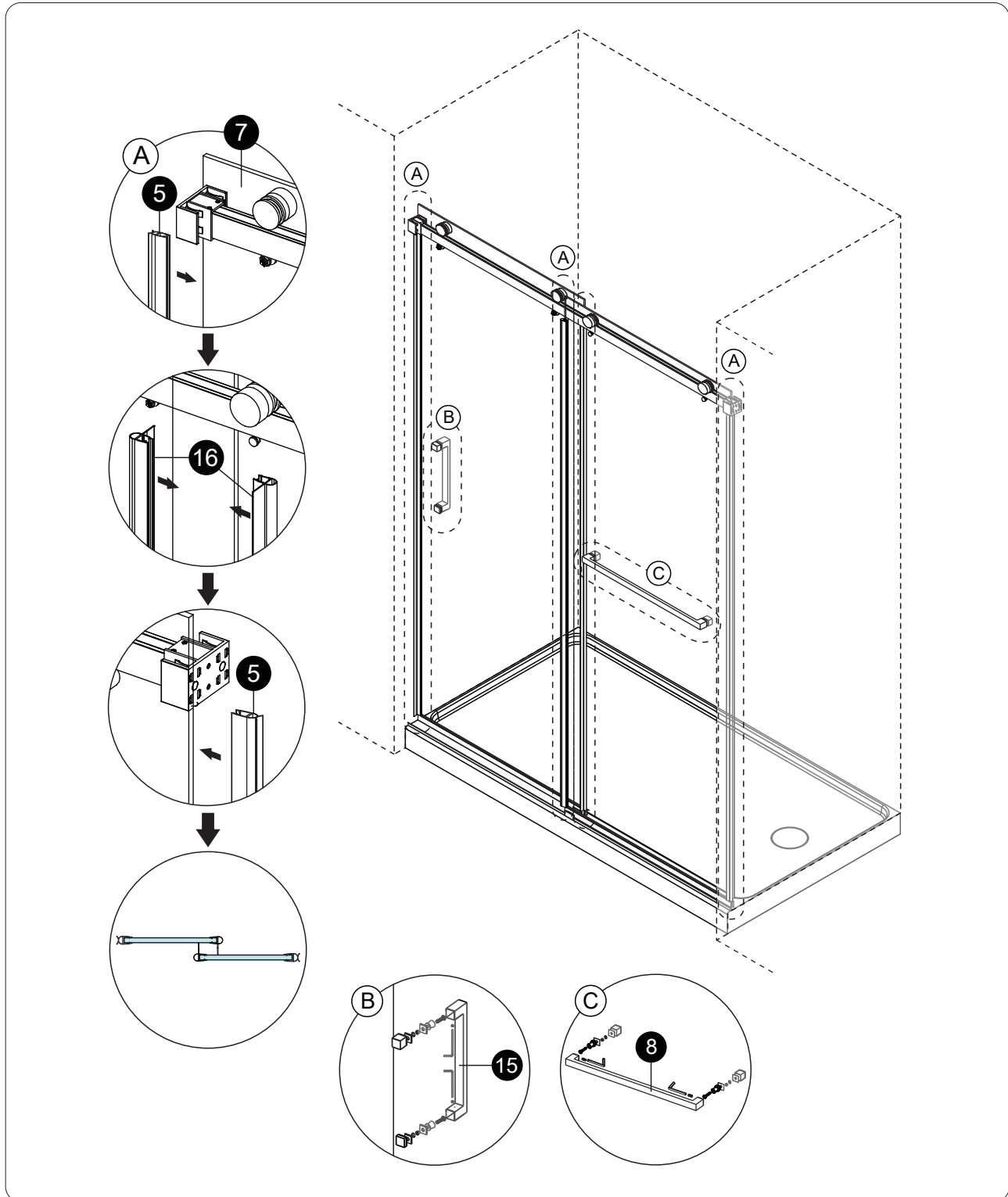
Install Steps (Page 9)



INSTALLATION GUIDE

SECORD 2.0

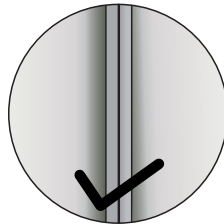
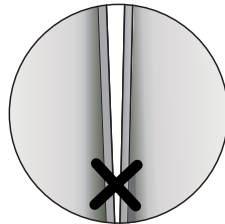
Install Steps (Page 10)



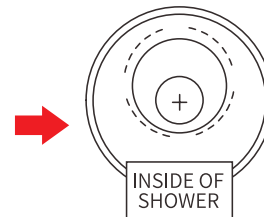
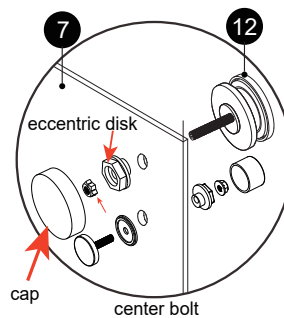
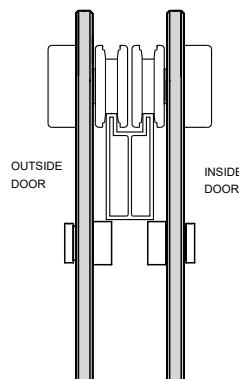
INSTALLATION GUIDE

SECORD 2.0

Install Steps (Page 11)



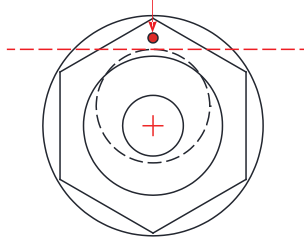
We shall not have a gap between the door panels and wall.



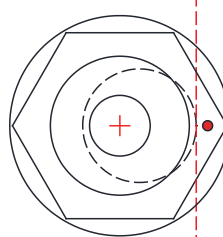
Adjust from the out side of the door where the eccentric disk is located



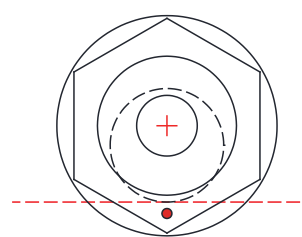
Tip: There is a mark on the location of the high spot eccentric disk to make adjustment easier to see.



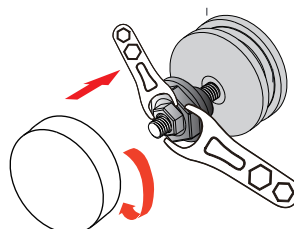
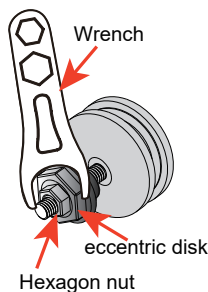
Top: High spot of disk bushing



Middle: Glass level



Bottom: Bottom spot of disk bushing



HOW TO ADJUST

- Step 1 :** Loosen hexagon nut with wrench.
- Step 2 :** Rotate eccentric disk to level glass panels.
- Step 3 :** Tighten hexagon nut.

INSTALLATION GUIDE

SECORD 2.0

Install Steps (Page 12)



24 HOURS

