

# INSTALLATION GUIDE

## SUMMERSIDE 2.0

### General Information

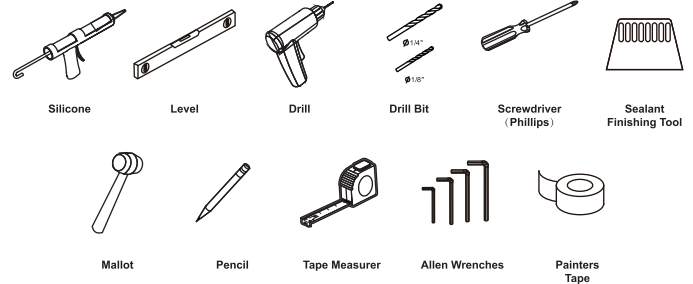
Please check the condition & that all parts are included with your new shower doors. Any issues must be reported right away. Delaying this might affect the warranty of the item.

**Warning:** handle glass with care. It cannot be re-worked.

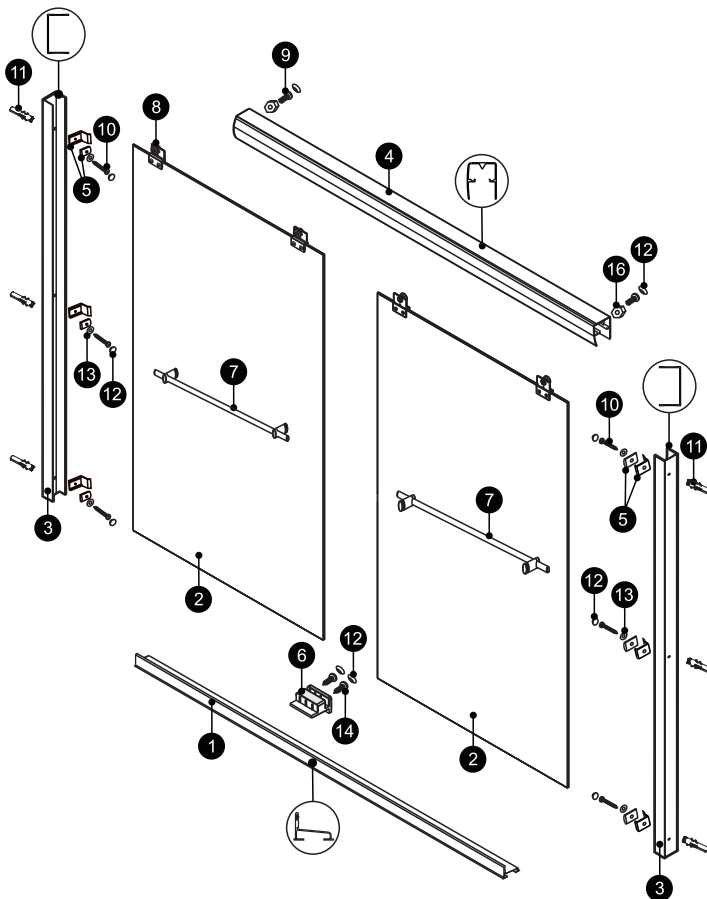
**Aftercare:** clean regularly with soap & water; especially in areas with hard water. Avoid contact with strong chemicals such as organic solvents or strippers.

**Warning:** two adults may be required to install shower doors.

### Recommended Tools



### Assembly Drawing



PART #	DESCRIPTION	Q'TY
1	Bottom Horizontal Rail	1pc
2	Door Panels	2pcs
3	Wall Jambs	2pcs
4	Top Horizontal Rail	1pc
5	Bumper Blocks x 6 Stopper Blocks x 6	6sets
6	Bottom Guide	1pc
7	Towel Bar	2set
8	Roller Bracket Assembly	4sets
9	Round Head Screw M4x3/8"	2pcs
10	Round Head Screws ST4x1 3/8"	6pcs
11	Wall Plugs	6pcs
12	Screw Caps	10pcs
13	Washers	6pcs
14	Round Head Screw ST4x9/16"	2pcs
15	Screw nut	2pcs

**Disclaimer:** please hire a specialist if you feel you are unable to install yourself. Teago cannot be held liable for a faulty install or damage done by it.



Massachusetts Code: Approved



10-Year  
Warranty

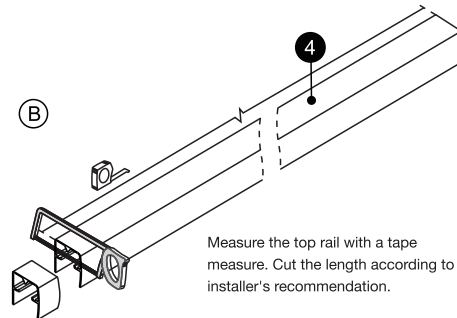
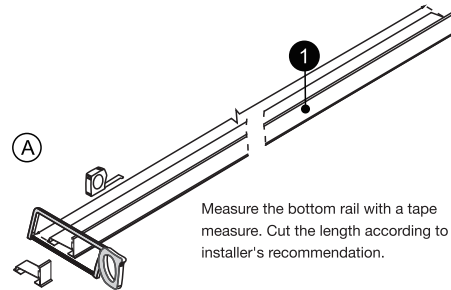
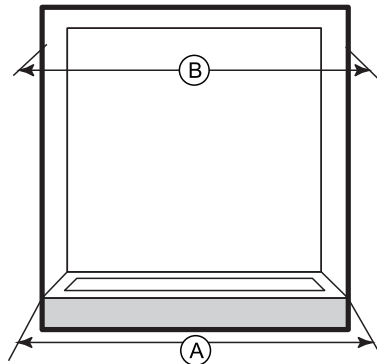
**teago.ca**

# INSTALLATION GUIDE

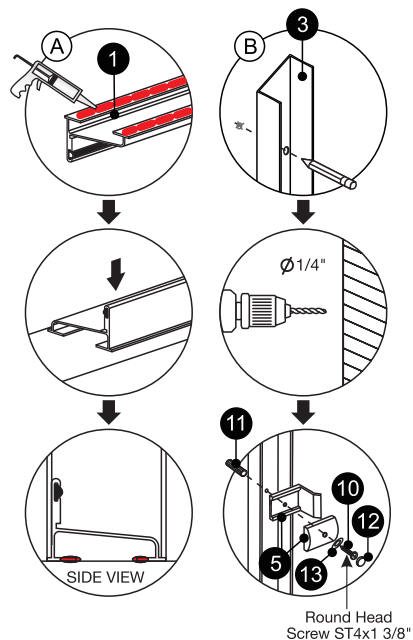
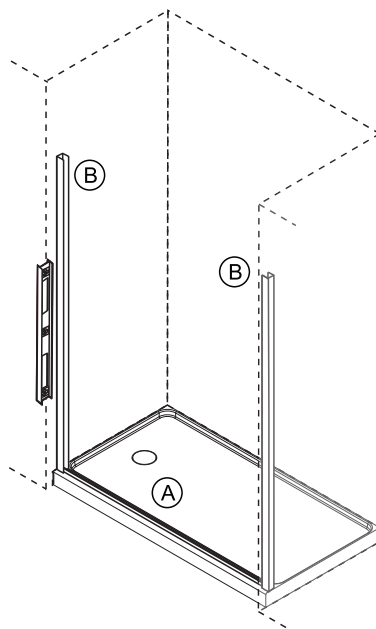
## SUMMERSIDE 2.0

### Install Steps (Page 1)

#### Step 1



#### Step 2

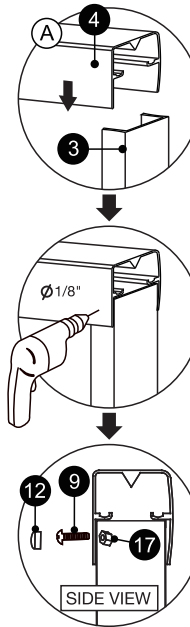
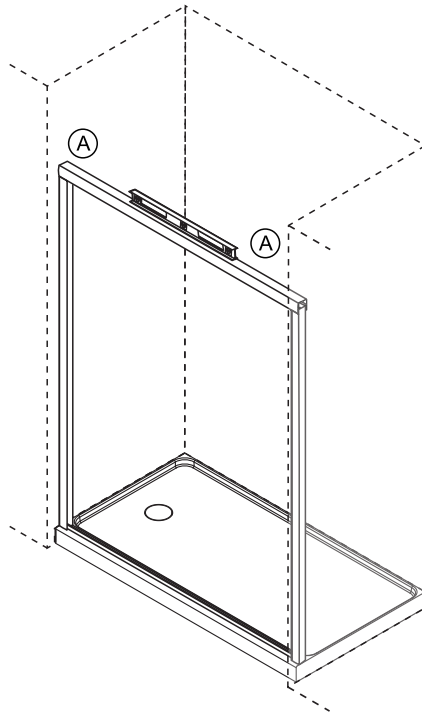


# INSTALLATION GUIDE

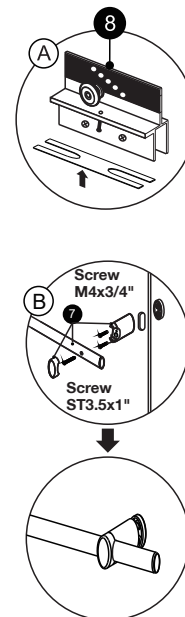
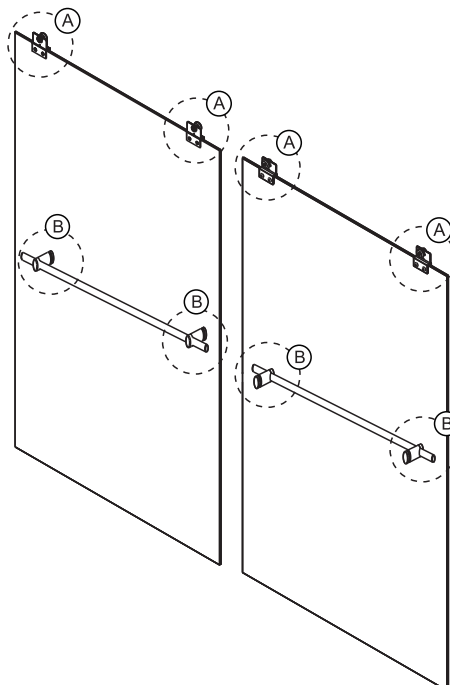
## SUMMERSIDE 2.0

Install Steps (Page 2)

### Step 3



### Step 4

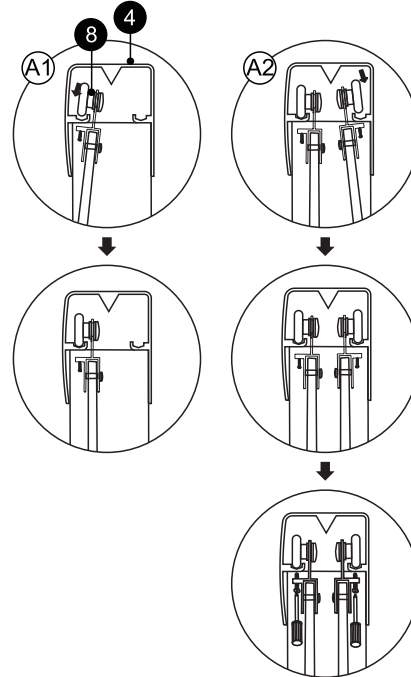
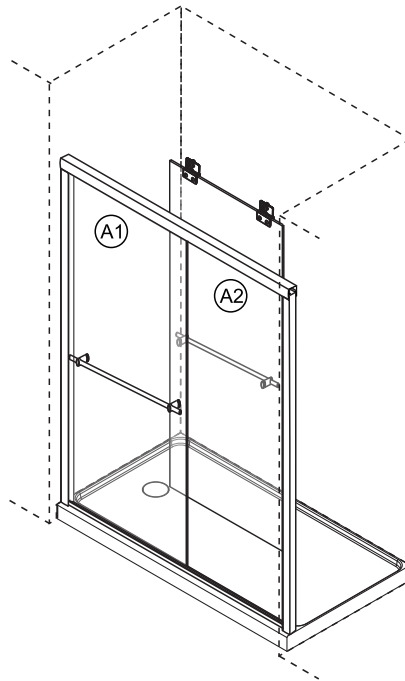


# INSTALLATION GUIDE

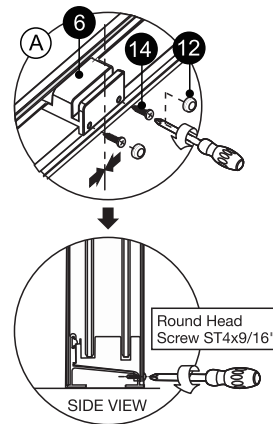
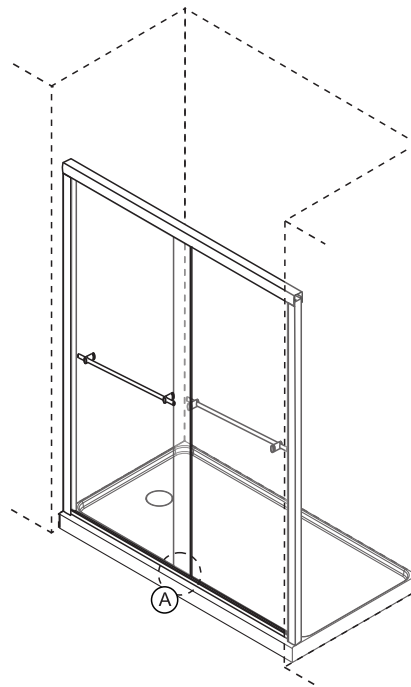
## SUMMERSIDE 2.0

Install Steps (Page 3)

### Step 5



### Step 6



## INSTALLATION GUIDE

### SUMMERSIDE 2.0

Install Steps (Page 4)



**24 HOURS**

Allow 24 hours for silicone to dry before use.

