



TEAGO
Bath Solutions

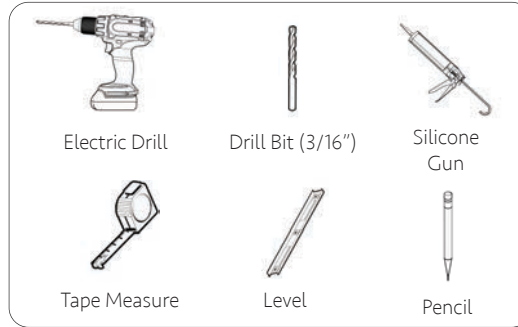
INSTALLATION GUIDE

SHOWER SIDE & BACK WALLS

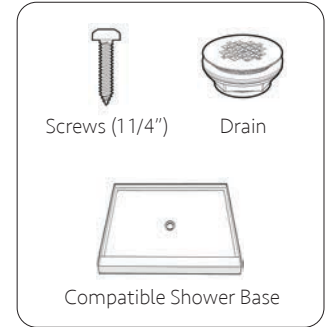
Applicable Models



Recommended Tools



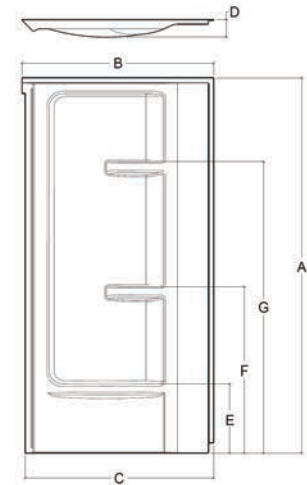
Recommended Parts



SPECIFICATIONS

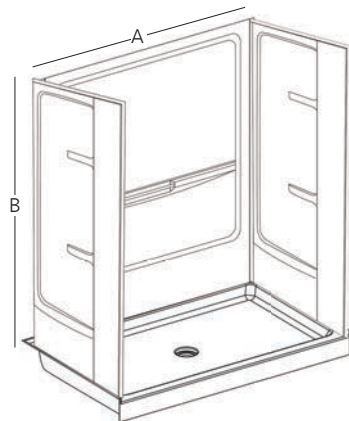
MODELS	SIDE WALL DIMENSIONS*						
	A	B	C	D	E	F	G
AWF32	72" (1828mm)	32" (813mm)	31.9" (811mm)	3.3" (83mm)	13.4" (34mm)	32" (812mm)	55.9" (1420mm)
AWF36	72" (1828mm)	36" (915mm)	35.9" (913mm)	3.3" (83mm)	13.4" (34mm)	32" (812mm)	55.9" (1420mm)
AWF40	72" (1828mm)	40" (1016mm)	39.9" (1014mm)	3.3" (83mm)	13.4" (34mm)	32" (812mm)	55.9" (1420mm)

* Tolerance on dimensions: $\pm 0.25"$ (6mm)



MODELS	BACK WALL DIMENSIONS*	
	A	B
ABW32	32" (813mm)	72" (1828mm)
ABW48	48" (1219mm)	72" (1828mm)
ABW60	60" (1524mm)	72" (1828mm)

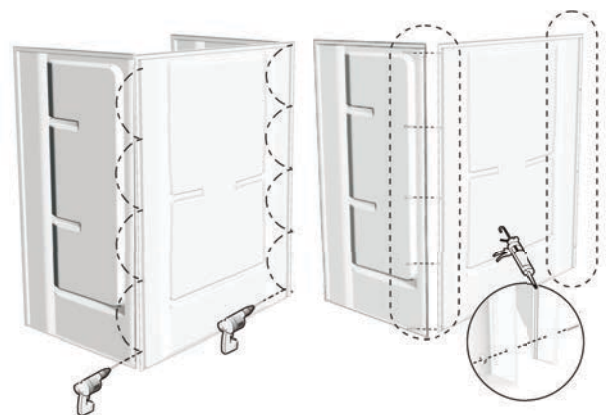
* Tolerance on dimensions: $\pm 0.25"$ (6mm)



INSTALL STEPS

1

Remove protective film around surrounding area of the back flange. Run a bead of silicone along channel of wall panel. Using bolts supplied, join wall panels together.



Disclaimer: please hire a specialist if you feel you are unable to install yourself. Teago cannot be held liable for a faulty install or damage done by it.



Massachusetts Code: Approved



10-Year
Warranty

teago.ca



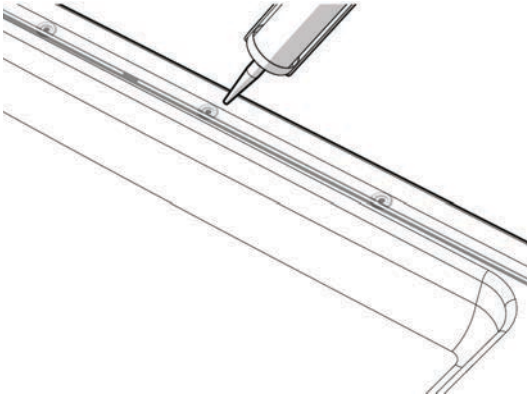
TEAGO
Bath Solutions

INSTALLATION GUIDE

SHOWER SIDE & BACK WALLS

2

Prior to assembling wall & base, remove protective film around surrounding area of base. Run a bead of silicone along the edge where the wall panel will be set on the base & around all drilled holes on base.



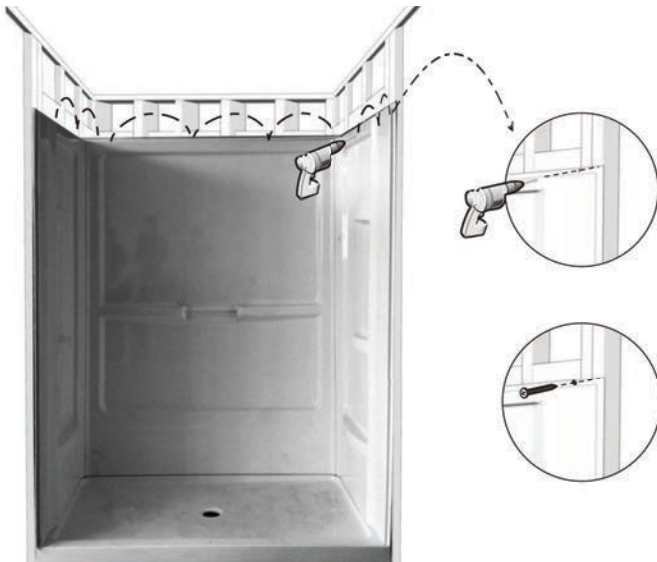
3

Join wall panels to base using supplied bolts.



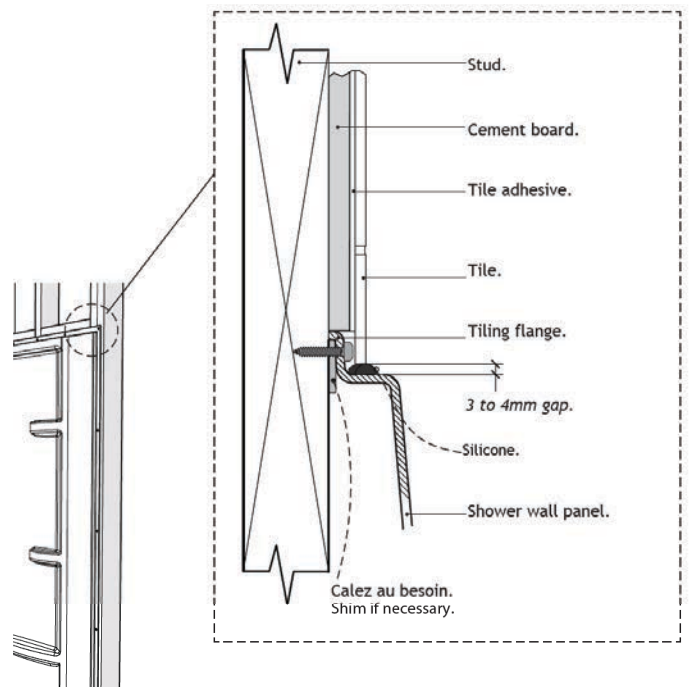
4

Carefully position assembled unit into position & ensure it is level & plumb. Drill 3/16" diameter holes evenly spaced in wall panel return flanges along the top of both panels & down on both sides. Attach wall panels to studs using 1 1/4" screws (stainless steel preferably).



5

Tips to achieve a professional looking & watertight finish.



Note: Please note these are only general installation guidelines. Steps may vary from time to time depending on the circumstances. Do not hesitate to contact us if you require any further information. Our contact info can be found at teago.ca.



Massachusetts Code: Approved



10-Year
Warranty

teago.ca