



**TEAGO**  
Bath Solutions

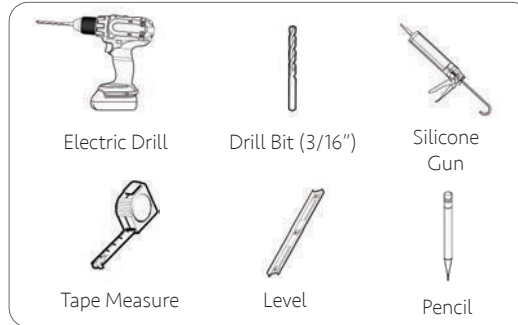
## INSTALLATION GUIDE

### SHOWER SIDE & BACK WALLS

#### Applicable Models



#### Recommended Tools



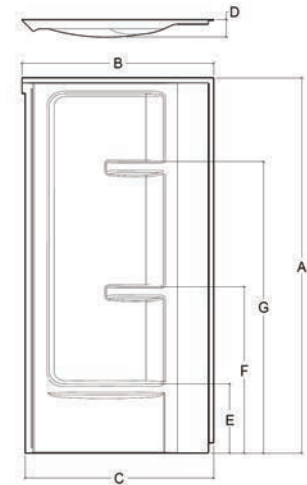
#### Recommended Parts



#### SPECIFICATIONS

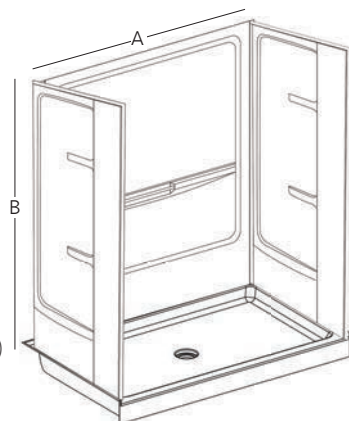
MODELS	DIMENSIONS*						
	A	B	C	D	E	F	G
AWF3277	77" (1956mm)	33.1" (840mm)	32.3" (820mm)	3.3" (83mm)	18.4" (468mm)	37" (940mm)	60.6" (1540mm)
AWF3677	77" (1956mm)	37" (940mm)	36.1" (917mm)	3.3" (83mm)	18.4" (468mm)	37" (940mm)	60.6" (1540mm)
AWF3877	77" (1956mm)	39.4" (1000mm)	38.6" (980mm)	3.3" (83mm)	18.4" (468mm)	37" (940mm)	60.6" (1540mm)

\* Tolerance on dimensions:  $\pm 0.25"$  (6mm)



MODELS	BACK WALL DIMENSIONS*	
	A	B
ABW3277	32" (813mm)	77" (1956mm)
ABW4877	48" (1219mm)	77" (1956mm)
ABW6077	60" (1524mm)	77" (1956mm)

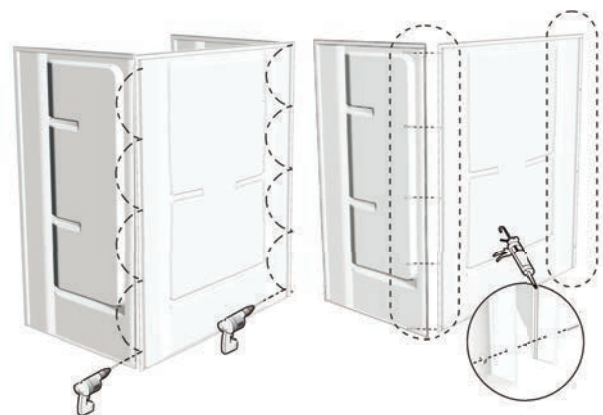
\* Tolerance on dimensions:  $\pm 0.25"$  (6mm)



#### INSTALL STEPS

1

Remove protective film around surrounding area of the back flange. Run a bead of silicone along channel of wall panel. Using bolts supplied, join wall panels together.



Disclaimer: please hire a specialist if you feel you are unable to install yourself. Teago cannot be held liable for a faulty install or damage done by it.



Massachusetts Code: Approved



10-Year  
Warranty

**teago.ca**

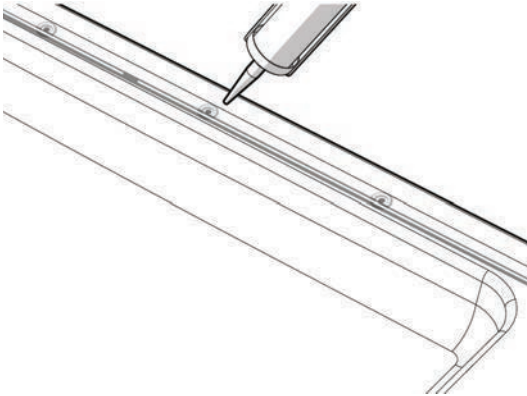


**TEAGO**  
*Bath Solutions*

## INSTALLATION GUIDE

### SHOWER SIDE & BACK WALLS

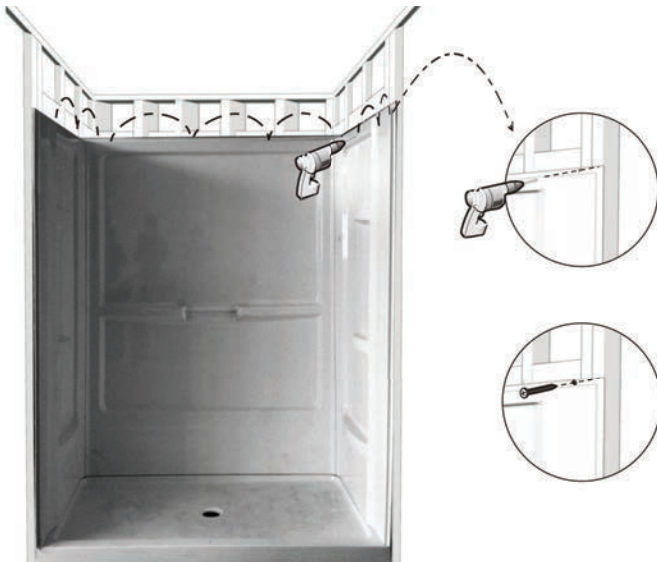
- 2 Prior to assembling wall & base, remove protective film around surrounding area of base. Run a bead of silicone along the edge where the wall panel will be set on the base & around all drilled holes on base.



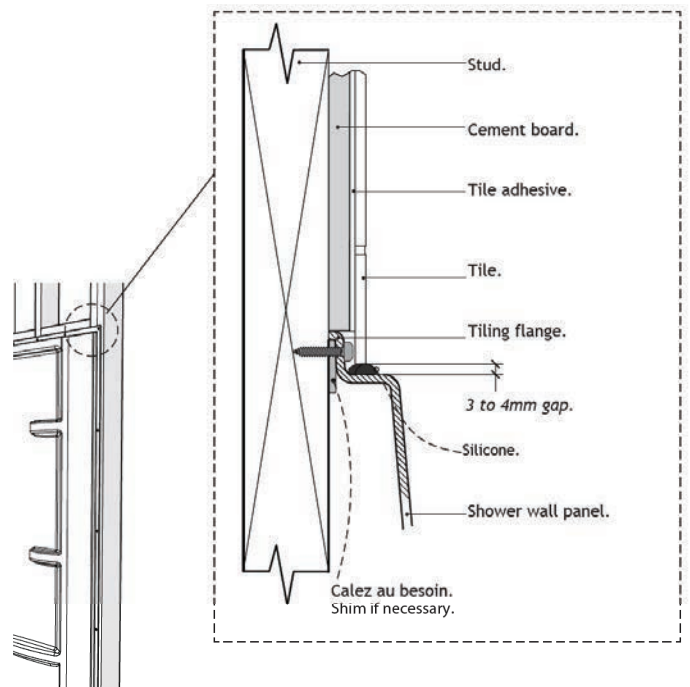
- 3 Join wall panels to base using supplied bolts.



- 4 Carefully position assembled unit into position & ensure it is level & plumb. Drill 3/16" diameter holes evenly spaced in wall panel return flanges along the top of both panels & down on both sides. Attach wall panels to studs using 1 1/4" screws (stainless steel preferably).



- 5 Tips to achieve a professional looking & watertight finish.



**Note:** Please note these are only general installation guidelines. Steps may vary from time to time depending on the circumstances. Do not hesitate to contact us if you require any further information. Our contact info can be found at [teago.ca](http://teago.ca).



Massachusetts Code: Approved



10-Year  
Warranty

**teago.ca**