

# INSTALLATION GUIDE

## WINDERMERE 2.0

### General Information

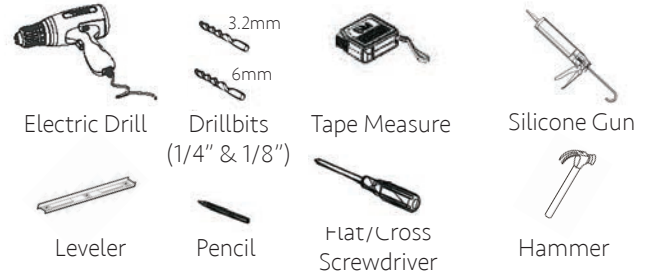
Please check the condition & that all parts are included with your new shower doors. Any issues must be reported right away. Delaying this might affect the warranty of the item.

**Warning:** handle glass with care. It cannot be re-worked.

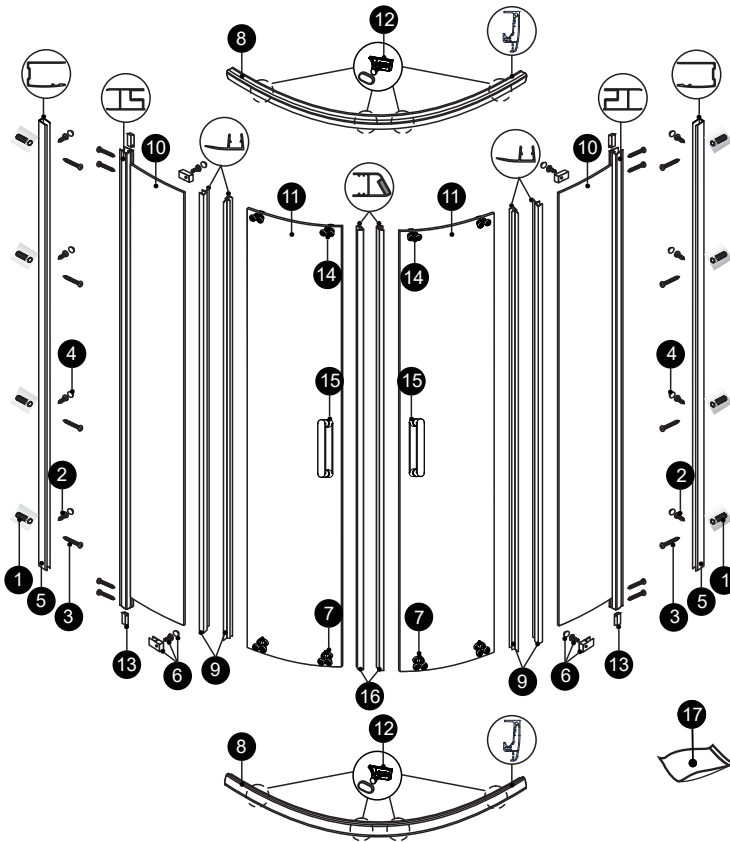
**Aftercare:** clean regularly with soap & water; especially in areas with hard water. Avoid contact with strong chemicals such as organic solvents or strippers.

**Warning:** two adults may be required to install shower doors.

### Recommended Tools



### Assembly Drawing



PART #	DESCRIPTION	Q'TY
1	Wall Plugs	8pcs
2	Screws ST4x8	8pcs
3	Screws ST4x35	16pcs
4	Screw Cover Caps	8pcs
5	Wall Jamb	2pcs
6	Bumper Blocks(L/R) x 2 for each	2sets
	Bumper Blocks Caps x 4	
	Screws ST4x10 x 4	
7	Bottom Rollers	4pcs
8	Rails	2pcs
9	Gaskets	4pcs
10	Fixed Panels	2pcs
11	Door Panels	2pcs
12	Set Piece(L/R) x 4 for each	4sets
	Set Piece Caps x 8	
	Screws M4x8 x 8	
13	Spacer Blocks	4pcs
14	Top Rollers	4pcs
15	Handle	2sets
16	Magnetic Seals	2pcs
17	Lube	1pc

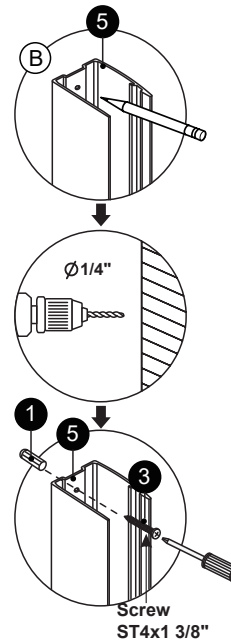
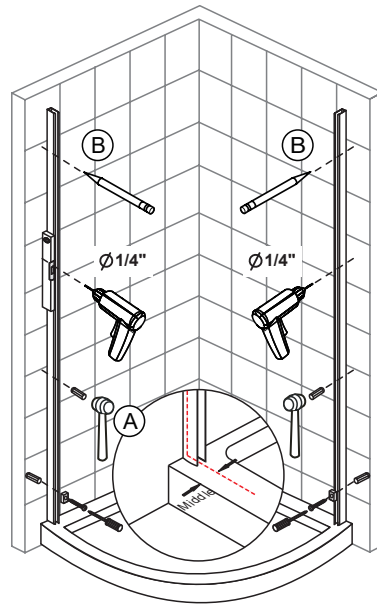
**Disclaimer:** please hire a specialist if you feel you are unable to install yourself. Teago cannot be held liable for a faulty install or damage done by it.

# INSTALLATION GUIDE

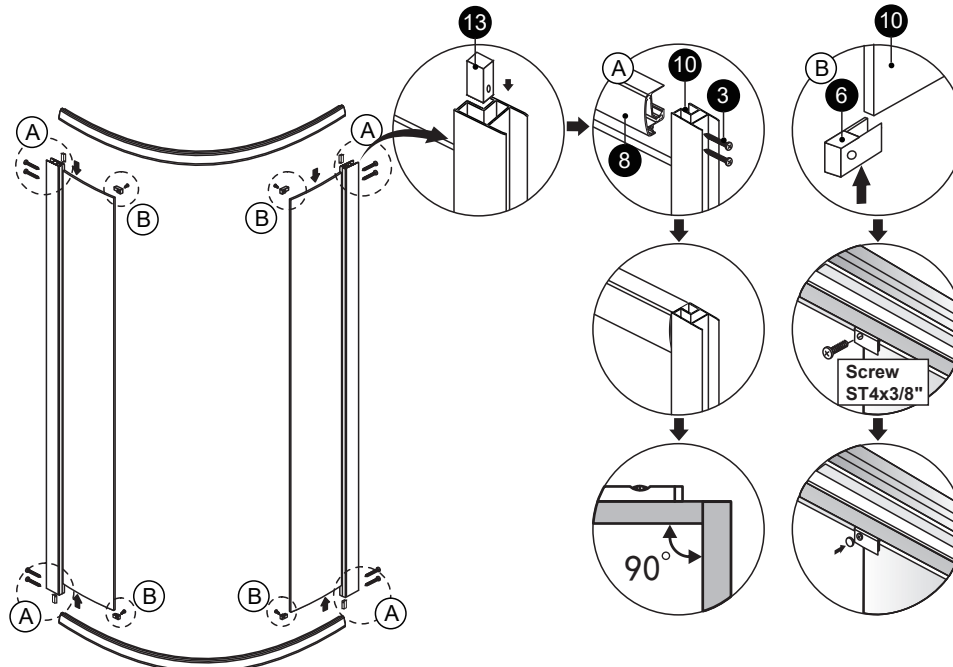
## WINDERMERE 2.0

Install Steps (Page 1)

### Step 1



### Step 2

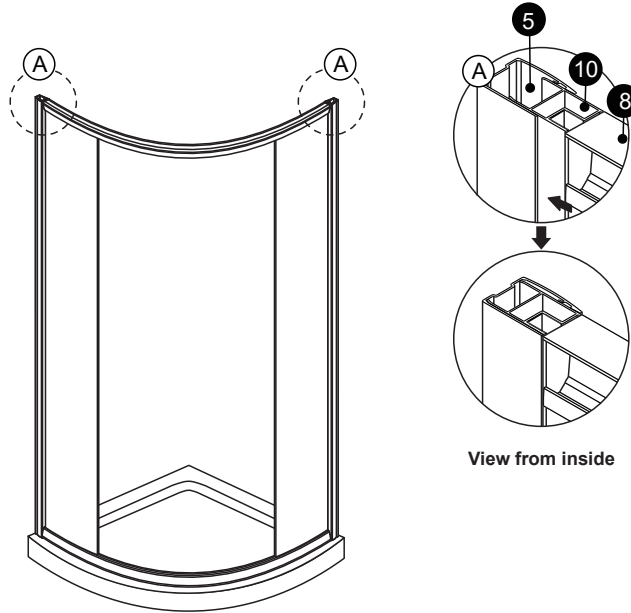


# INSTALLATION GUIDE

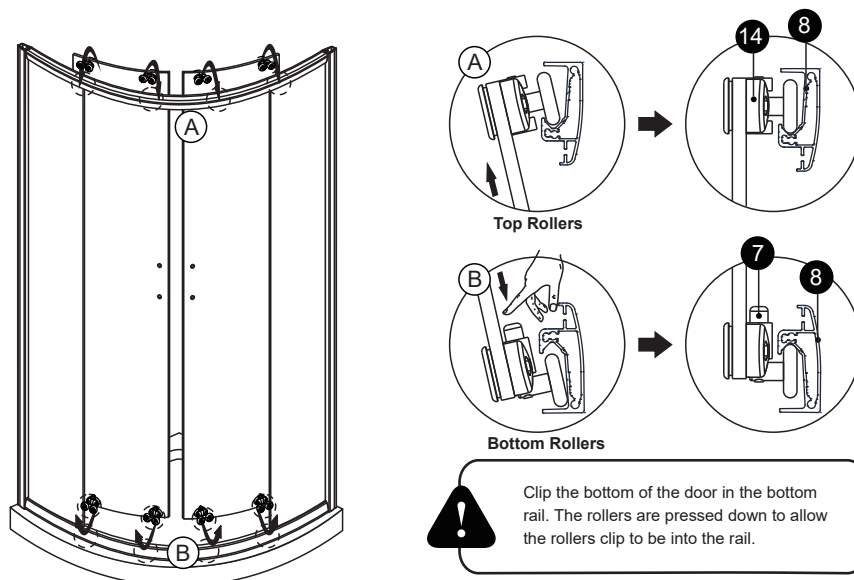
## WINDERMERE 2.0

Install Steps (Page 2)

### Step 3



### Step 4

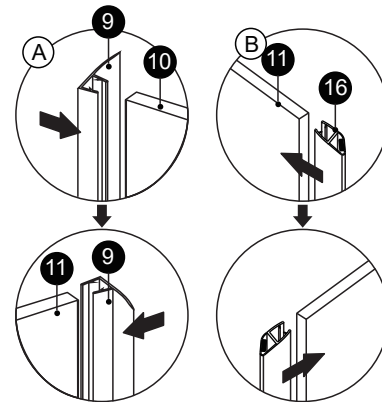
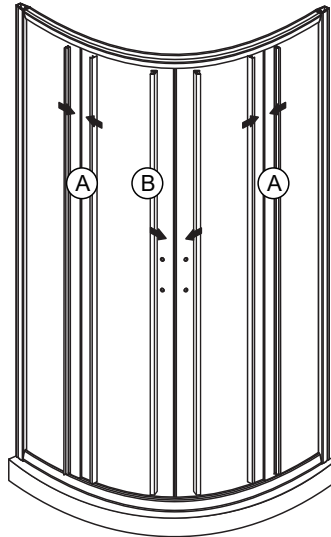


# INSTALLATION GUIDE

## WINDERMERE 2.0

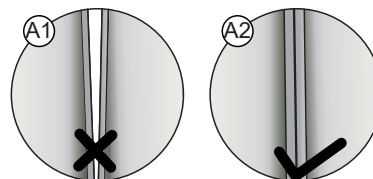
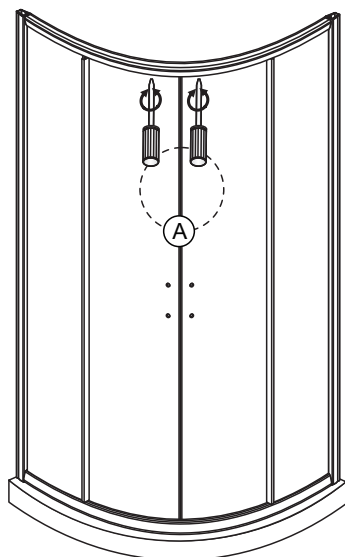
Install Steps (Page 3)

### Step 5



Ensure wall profiles are plumb.  
Adjust enclosure to be square and level.  
Wheels should be adjusted to square the  
doors and ensure smooth running.

### Step 6



Adjust the sliding doors using the  
screws located on the bottom of top  
roller assemblies. Adjust rollers so  
that the sliding doors are parallel to  
the fixed panels and parallel to each  
other.

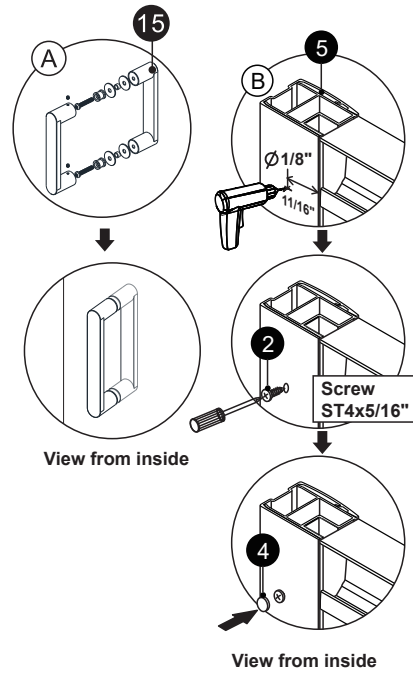
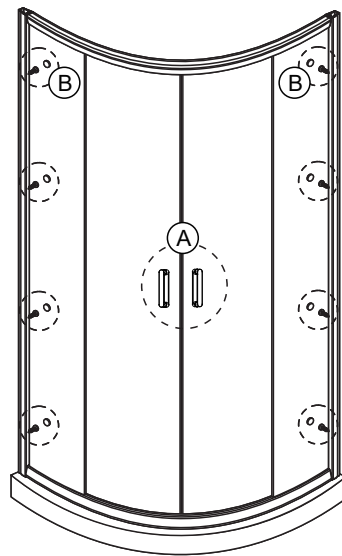
Note: Do not over tighten top rollers  
as this will cause the bottom rollers  
to jamb and or break.

# INSTALLATION GUIDE

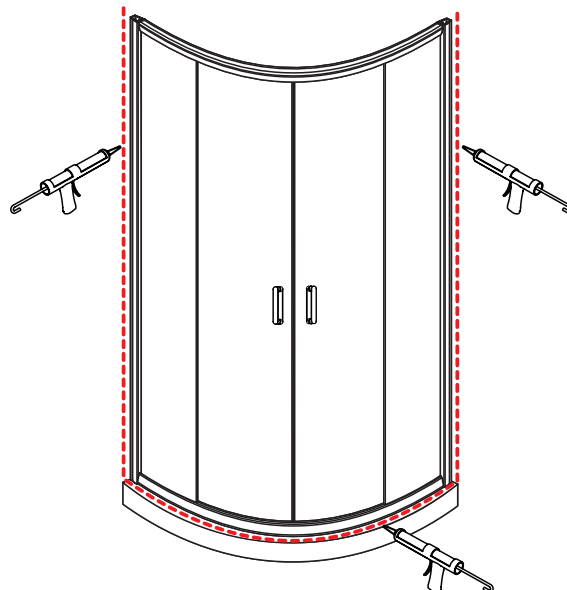
## WINDERMERE 2.0

Install Steps (Page 4)

### Step 7



### Step 8



**24 HOURS**

Allow 24 hours for silicone to dry before use.