

MWG, MWSM and MG Families of SBF Sport Bottle Fillers

INSTALLATION INSTRUCTIONS

OASIS PUSH BUTTON ACTIVATION SURFACE MOUNT BOTTLE FILLER INSTRUCTIONS

1. INSPECTION

Inspect the carton and water cooler for evidence of rough handling and concealed damage. Damage claims should be filed with the carrier.

2. MAINTENANCE

The only maintenance operation required is the removal of dirt and lint from the condenser. Inspection should be made at 3 month intervals. When condenser requires cleaning, remove dirt and lint with a vacuum cleaner. Observance of this procedure will insure adequate air circulation through the condenser so operation is efficient and economical.

3. OVERLOAD PROTECTION

The compressor motor is equipped with an automatic reset protector which will disconnect the motor from the line in case of an overload.

4. LUBRICATION

This unit is equipped with a hermetically sealed compressor and requires no additional lubrication. The fan motor on this unit seldom needs oiling, but if required, a few drops of SAE 10 oil should be used.

5. COOLING UNIT INSTALLATION

- a) Note: The following states require a licensed plumber to install cooler; AR, GA, MA, MI, OK, RI, SC, SD, TX, VT and WI. CA, KS, MN, NM and OR allow for a state-registered installer or contractor as well. State and local plumbing codes may prohibit the use of saddle tapping valves for water line connection in some applications. All connections must conform to applicable plumbing codes.
- b) This unit is a remote water cooling package suitable for mounting in most locations. CAUTION: If located in a recess or alcove, the ventilated sides of the cooling unit requires a minimum of 5" clearance from walls. This unit is not intended for cabinet or under-sink installation.
- c) Locate and install plumbing and electrical service in accordance with the dimensional drawing.
- d) Connect water supply tube from WATER-IN tube on cooling unit to the shut-off valve. If a filter is to be installed, place it in-line between the shut-off valve and the WATER-IN tube on the cooling unit.
- e) A filter kit is available for retrofit to this system. Refer to kit instructions for installation. WARNING: Do not flush filter until WATER-OUT connection is made. A bracket or clip can be used to secure the filter. Refer to the "Rough in and Dimensional Drawing" of the unit in which the filter is to be installed for specifics on use and location. Pre-punched holes are already located where the filter will be mounted.
- f) Make connection to WATER-OUT tube on cooling unit.
- g) Flush filter per instructions listed on the "Oasis Versafilter Cartridge Replacement Instructions" sheet.
- h) Check the available power supply against the cooling unit data plate to assure correct electrical service. Make service connections to the outlet box.
- i) Turn on power and water supply to the cooling unit. After cooling unit has filled as evidenced by the absence of the audible filling sound, draw off water until no air bubbles are seen in the water stream.

6. TO DISCONTINUE USE OF COOLING UNIT

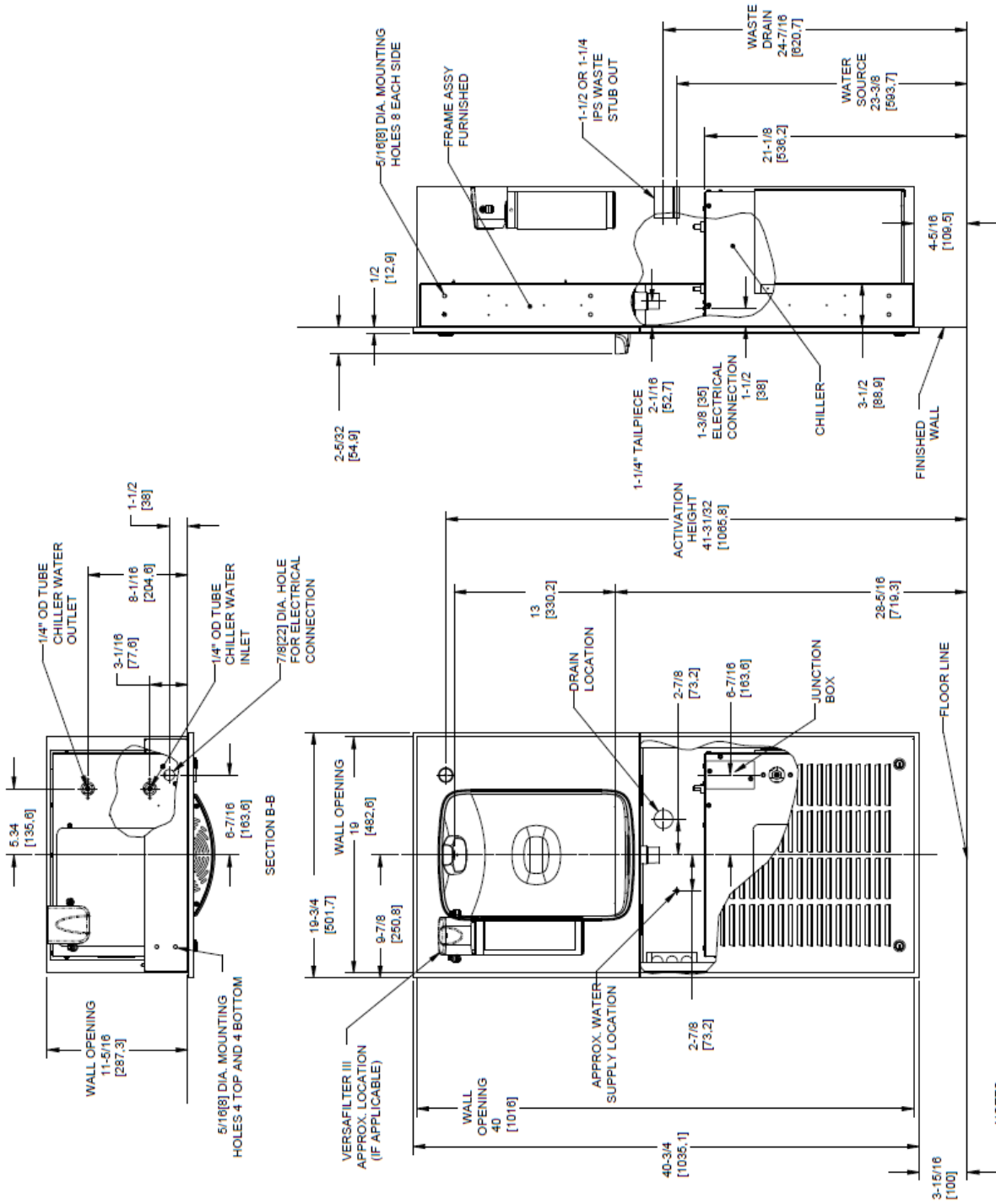
- a) Disconnect power supply.
- b) Close water supply shut-off valve.
- c) Provide container to catch water and remove drain plug from cooling unit.
- d) Replace plug when draining is complete.
- e) **ALWAYS DRAIN ALL WATER WHEN FREEZING TEMPERATURES ARE ANTICIPATED AND BEFORE SHIPPING THE COOLING UNIT.**

WARNING

The warranty and the Underwriters' Laboratories listing for this machine are automatically voided if this machine is altered, modified, or combined with any other machine or device. Alteration or modification of this machine may cause serious flooding and/or hazardous electrical shock or fire.

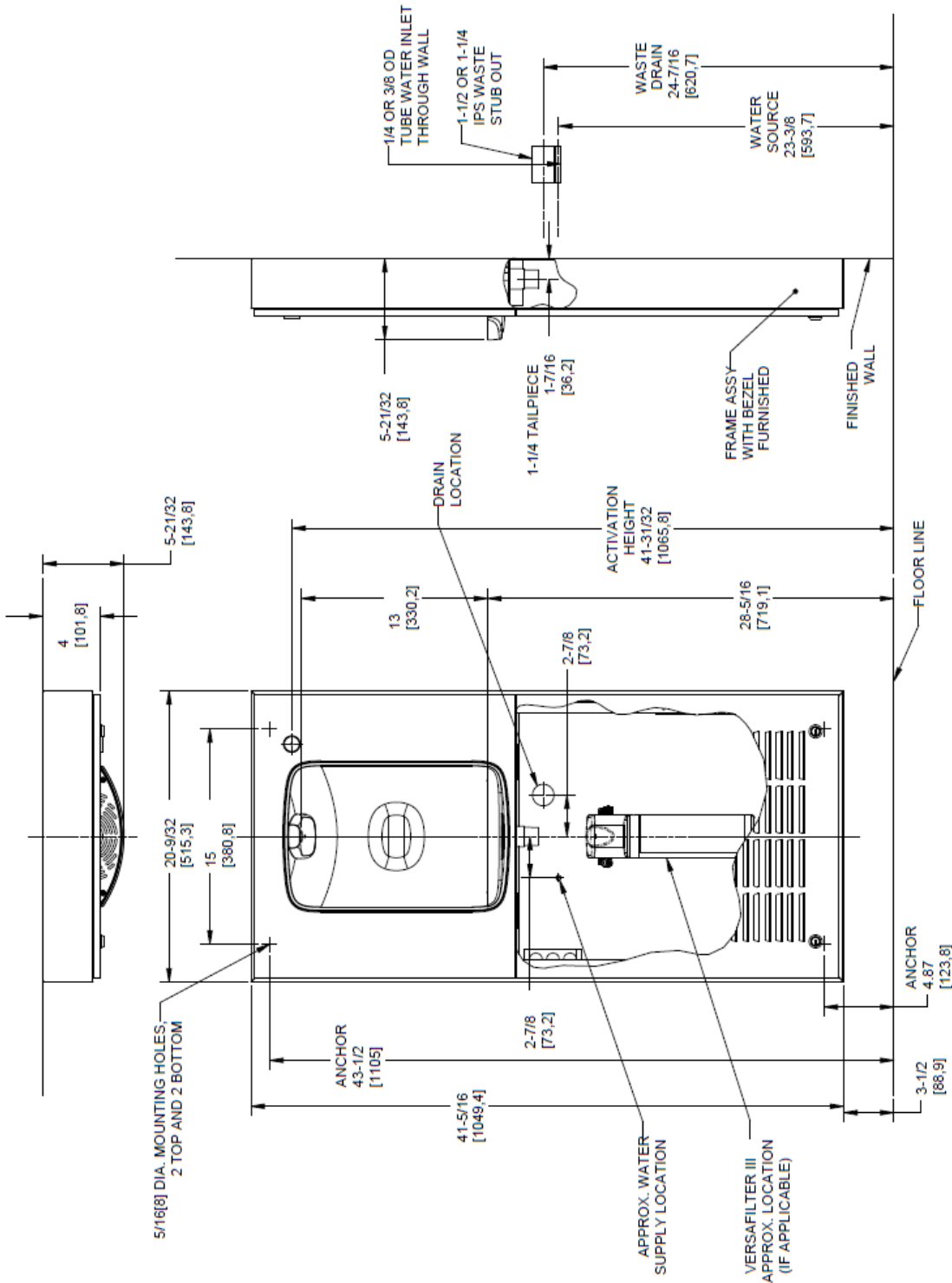
EXCEPT AS SET FORTH HEREIN, THE MANUFACTURER MAKES NO OTHER WARRANTY, GUARANTEE OR AGREEMENT EXPRESSED, IMPLIED OR STATUTORY, INCLUDING ANY IMPLIED WARRANTY OR MERCHANTABILITY OR FITNESS FOR A PARTICULAR PURPOSE.

Rough-in Drawings for models: MWGSBF, MWG8SBF, MWG8SBFY, MWG12SBF



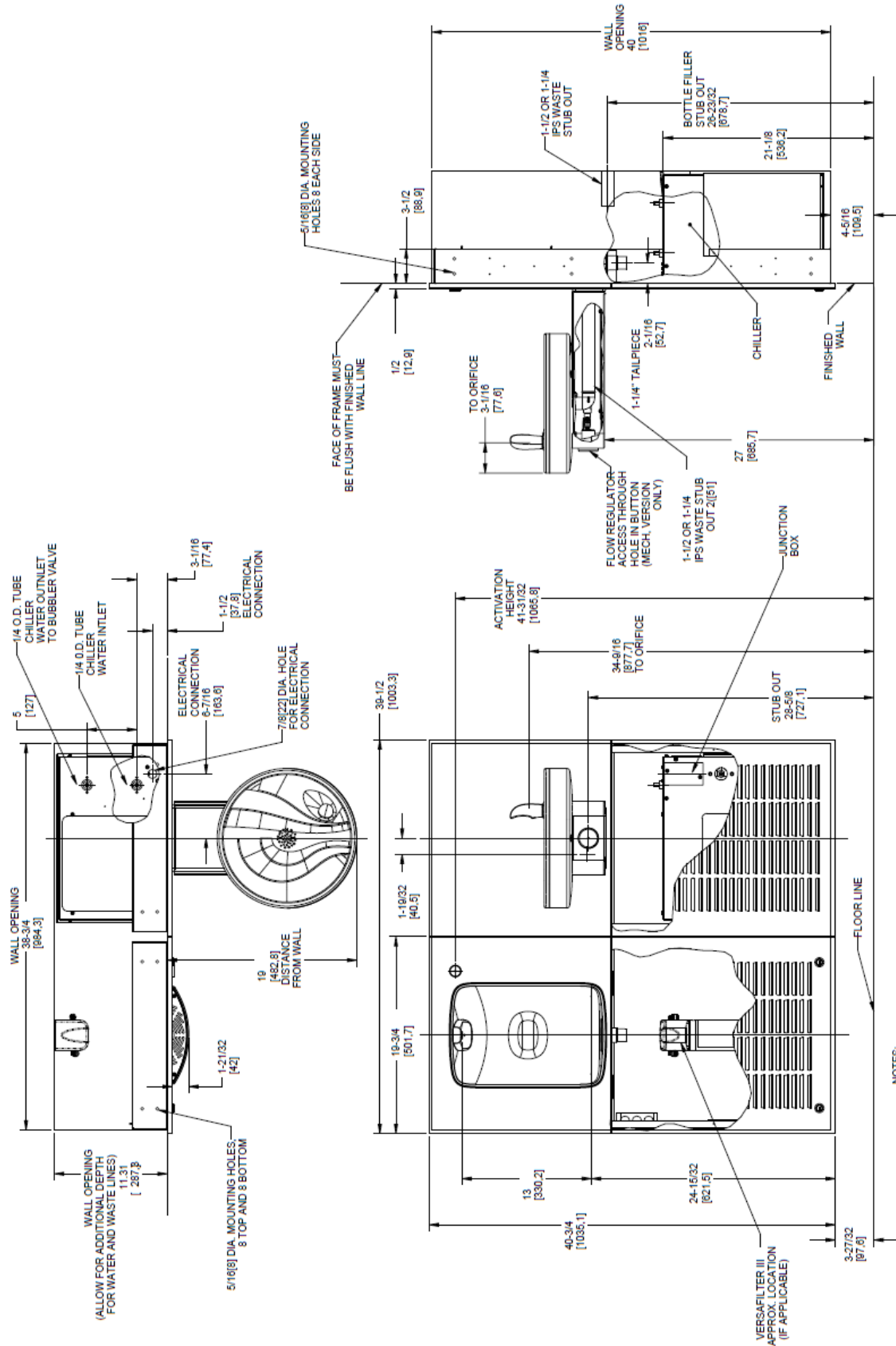
- NOTES:**
1. RECOMMENDED ADULT HEIGHT INSTALLATION SHOWN. ADJUST VERTICAL DIMENSIONS AS REQUIRED TO COMPLY WITH FEDERAL, STATE AND LOCAL CODES.
 2. STOP VALVE, TRAP, PIPE CONNECTOR TO WASTE LINE NOT PROVIDED. SHORT RADIUS TRAP REQUIRED.
 3. ALL DIMENSIONS ARE IN INCHES. DIMENSIONS IN [] ARE IN MILLIMETERS.
 4. 115V GROUND NORTH AMERICAN DUPLEX RECEPTACLE REQUIRED. THIS DRINKING WATER COOLER IS INTENDED TO BE CONNECTED TO A 20A MINIMUM GROUND FAULT CIRCUIT INTERRUPTING (GFCI) DEVICE TO MEET UL REQUIREMENTS.
 5. FILTER INSTALLATION LOCATIONS WILL VARY BY MODEL.

Rough-in Drawings for models: MWSMG8SBF, MWSMG12SBF



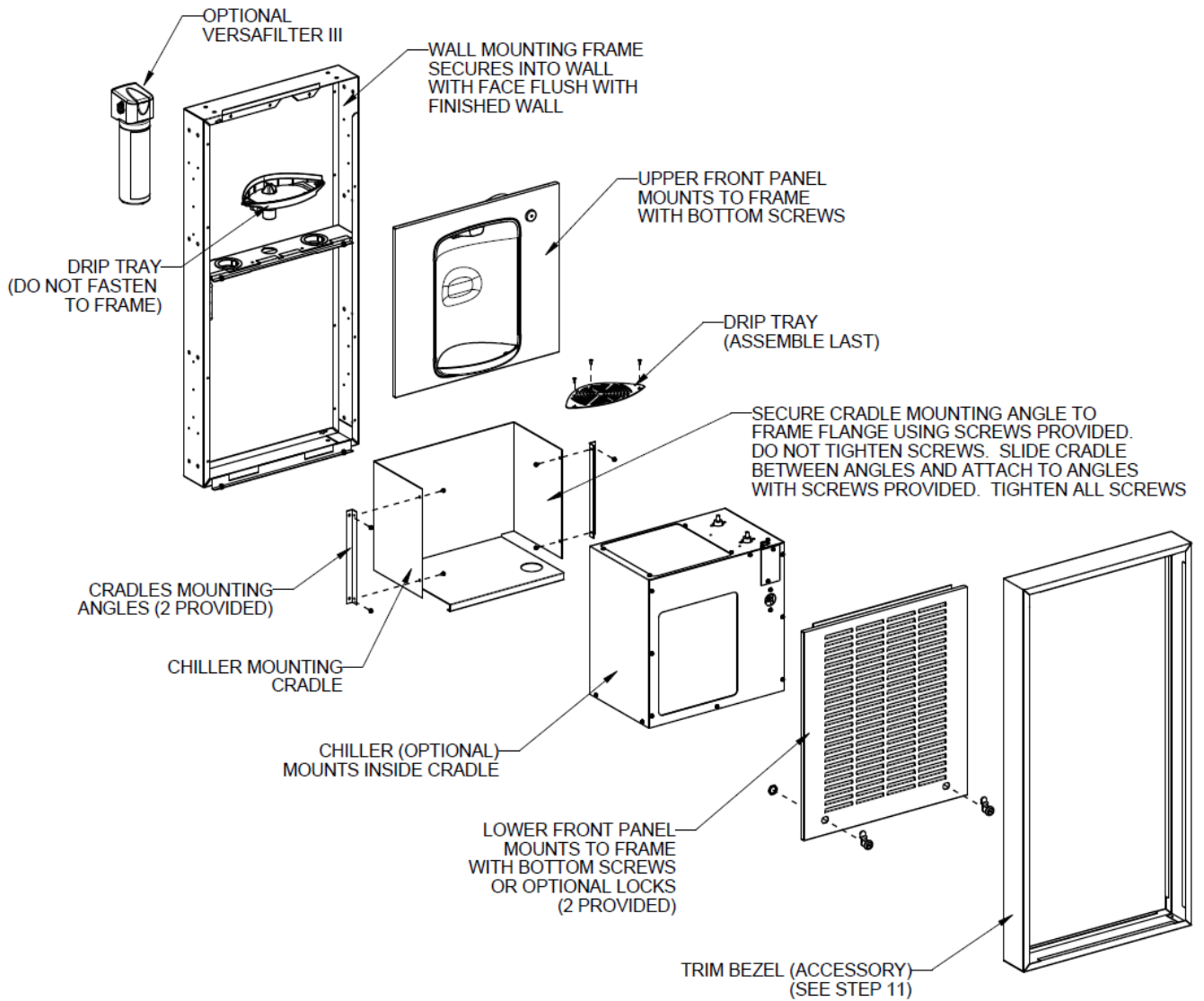
- NOTES:**
1. RECOMMENDED ADULT HEIGHT INSTALLATION SHOWN. ADJUST VERTICAL DIMENSIONS AS REQUIRED TO COMPLY WITH FEDERAL, STATE AND LOCAL CODES.
 2. STOP VALVE, TRAP, PIPE CONNECTOR TO WASTE LINE NOT PROVIDED. SHORT RADIUS TRAP REQUIRED.
 3. ALL DIMENSIONS ARE IN INCHES. DIMENSIONS IN [] ARE IN MILLIMETERS.
 4. 115V GROUNDED NORTH AMERICAN DUPLEX RECEPTACLE REQUIRED. THIS DRINKING WATER COOLER IS INTENDED TO BE CONNECTED TO A 20A MINIMUM GROUND FAULT CIRCUIT INTERRUPTING (GFCI) DEVICE TO MEET UL REQUIREMENTS.
 5. CHILLER, IF APPLICABLE, MUST BE ADEQUATELY SUPPORTED BY SOMETHING OTHER THAN THE FRAME.
 6. FILTER INSTALLATION LOCATIONS WILL VARY BY MODEL.

Rough-in Drawings for models: MG5BF, MG8SBF, MG12SBF



- NOTES:
1. RECOMMENDED ADULT HEIGHT INSTALLATION SHOWN. ADJUST VERTICAL DIMENSIONS AS REQUIRED TO COMPLY WITH FEDERAL, STATE AND LOCAL CODES.
 2. STOP VALVE, TRAP, PIPE CONNECTOR TO WASTE LINE NOT PROVIDED. SHORT RADIUS TRAP REQUIRED.
 3. ALL DIMENSIONS ARE IN INCHES. DIMENSIONS IN [] ARE IN MILLIMETERS.
 4. 115V GROUND NORTH AMERICAN DUPLEX RECEPTACLE REQUIRED. THIS DRINKING WATER COOLER IS INTENDED TO BE CONNECTED TO A 20A MINIMUM GROUND FAULT CIRCUIT INTERRUPTING (GFCI) DEVICE TO MEET UL REQUIREMENTS.
 5. FILTER INSTALLATION LOCATIONS WILL VARY BY MODEL.

BOTTLE FILLER ASSEMBLY WITH CHILLER

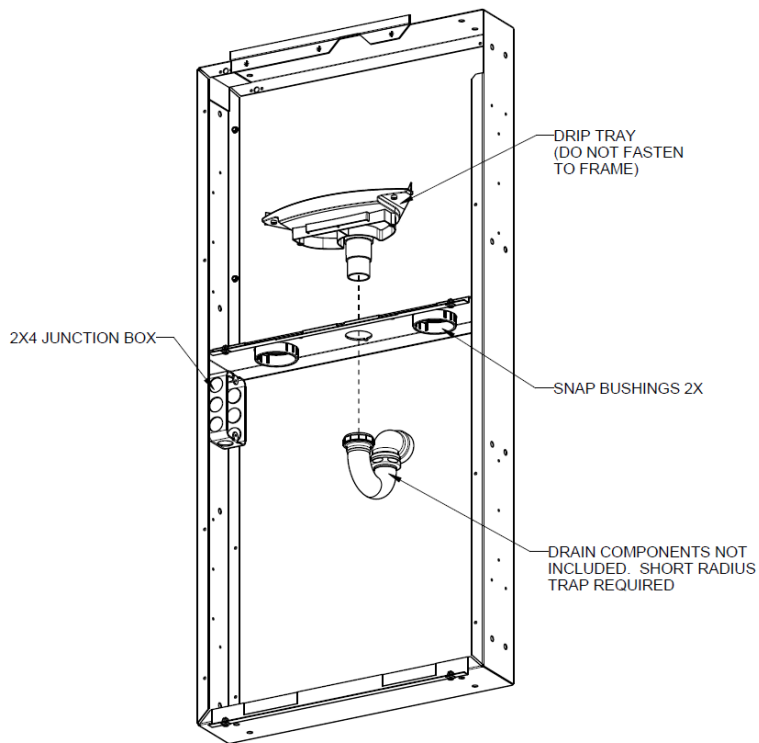


ASSEMBLY INSTRUCTIONS

NOTE: Review all instructions before installation to identify the proper steps for the model being installed.

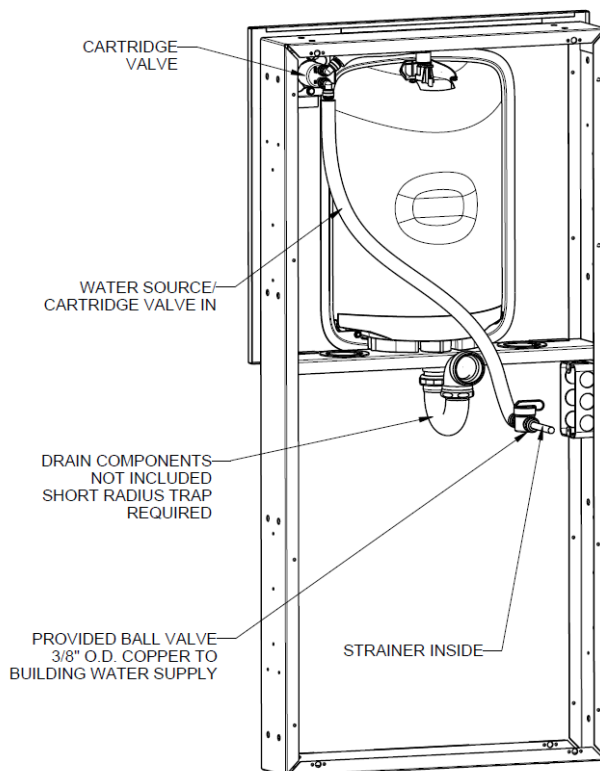
STEP 1:

- A. Install frame per rough-in drawing.
- B. Install drain assembly by placing the drip tray onto the frame with the tailpiece through the frame. **NOTE:** Do not fasten the drip tray to the frame and ensure the drip tray grill has been disassembled.
- C. Install snap bushings.



STEP 2:

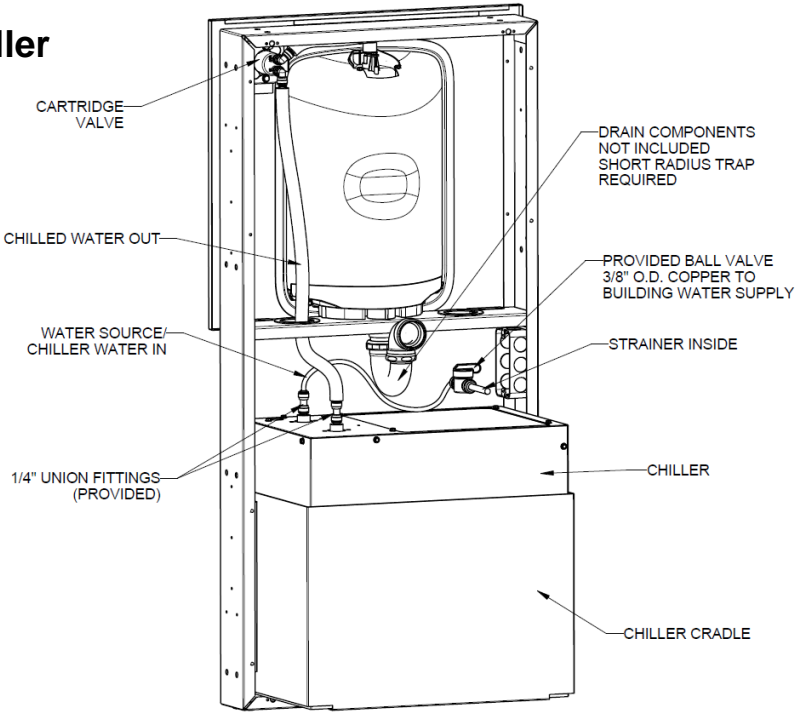
- A. Install provided ball valve and 3/8" O.D. copper tube to building water supply.
- B. Install tubing as shown before mounting the panel assembly.
- C. Install upper panel assembly (screws provided)
- D. Install lower louver panel using supplied locks or screws.
- E. Install drip tray grill and secure with screws (provided).



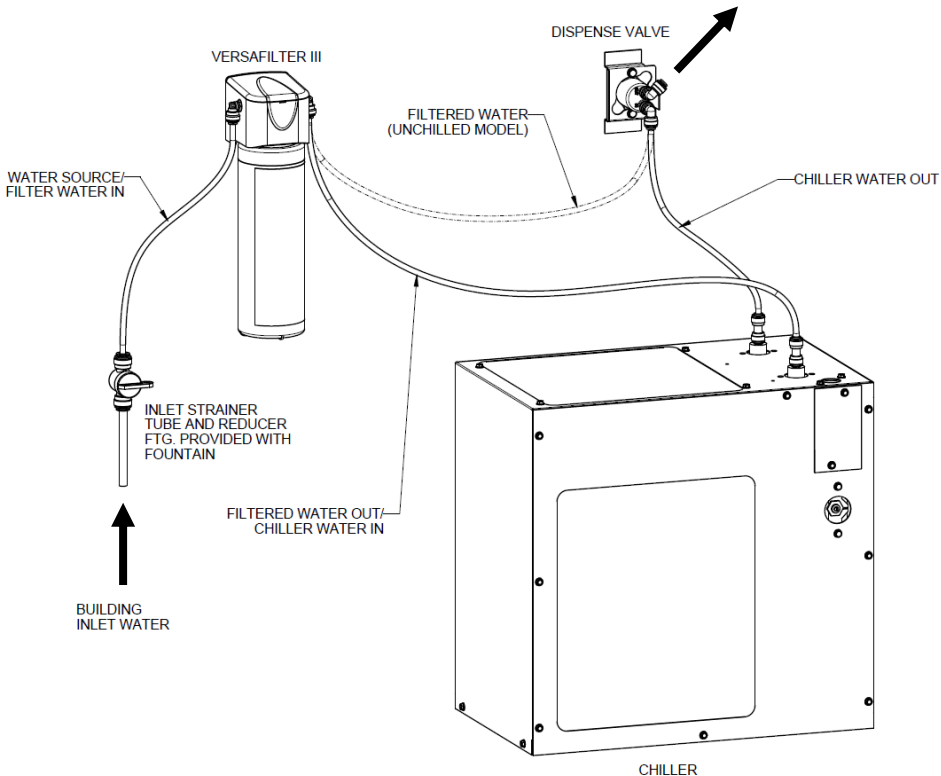
ASSEMBLY INSTRUCTIONS

STEP 3: For Models with Chiller

- A. Attach cradle to frame per rough-in drawing. (screws provided 4)
- B. Place chiller in frame.
- C. Install 1/4" union fitting on chiller inlet and outlet.
- D. Run the water line from the bottle filler solenoid valve "out" to the chiller "IN". Cut off excess and use it to run from chiller "OUT" to bottle filler delivery tube.

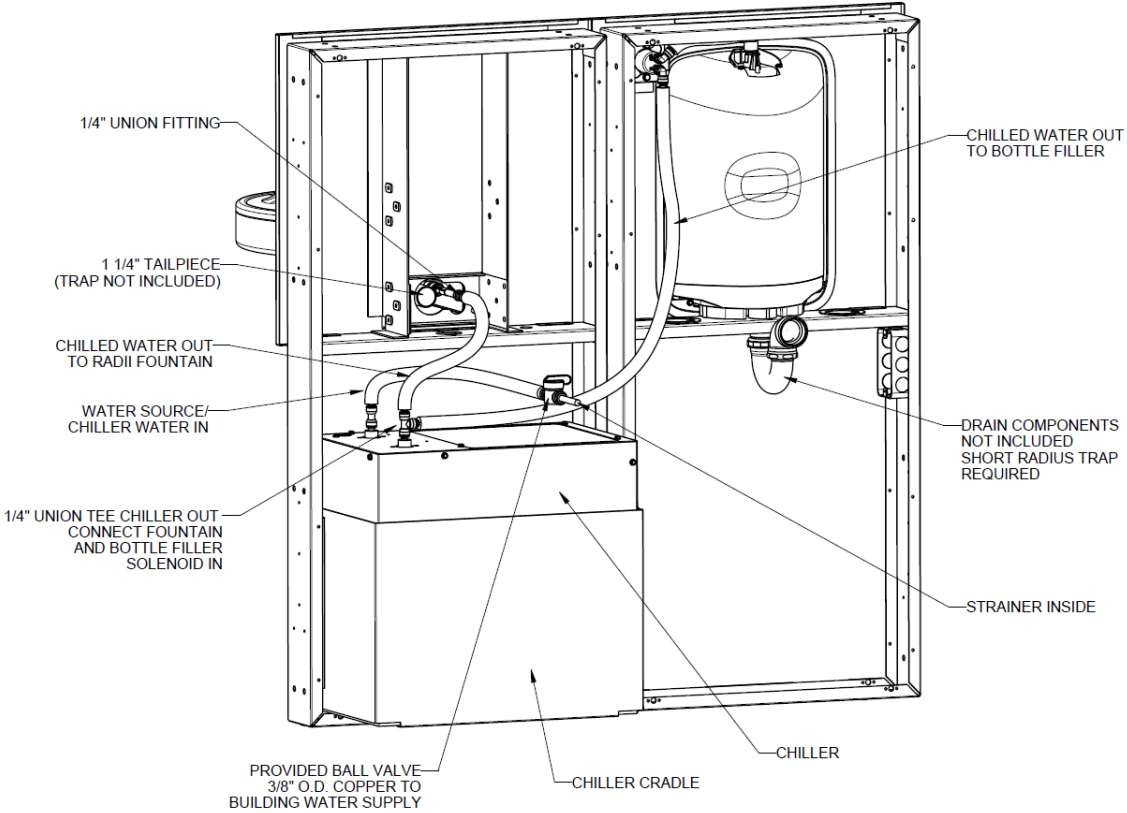


OPTIONAL FILTRATION:



ASSEMBLY INSTRUCTIONS

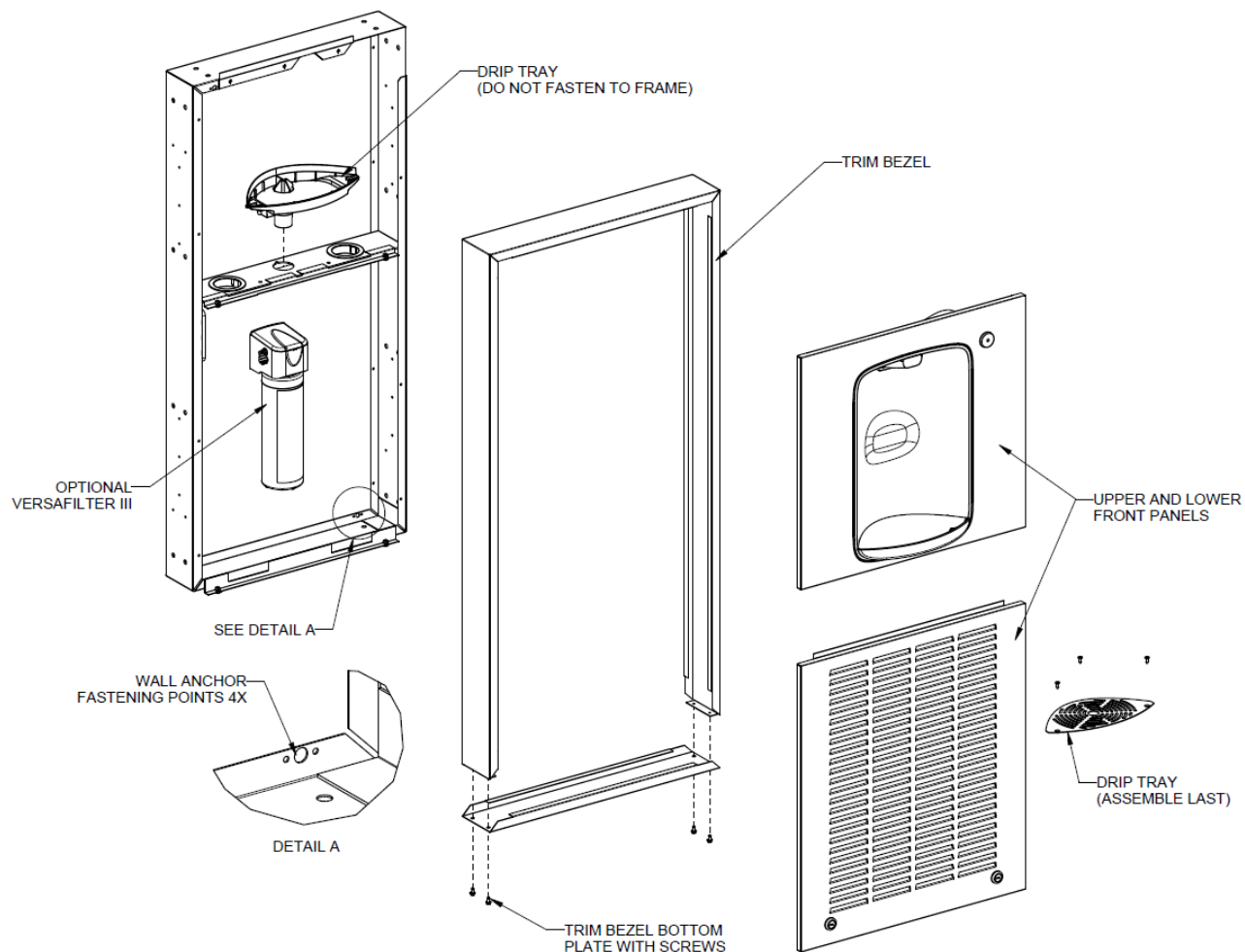
STEP 4: For Combination Units with Fountains



- A. Install chiller in frame.
- B. Install 1/4" union on chiller IN.
- C. Connect 1/4" union tee to chiller OUT.
- D. Determine tube length needed to connect bottle filler solenoid IN (the line attached to ball valve) to chiller tee. Cut tube and connect.
- E. Attach remaining tube from ball valve to chiller IN.
- F. Remove adapter fitting and copper tube from fountain water line. Install provided 1/4" union.
- G. Determine length of tube needed to connect bottle filler solenoid OUT to bottle filler delivery tube. Cut off excess.
- H. Use excess tube to connect fountain to chiller tee.

ASSEMBLY INSTRUCTIONS

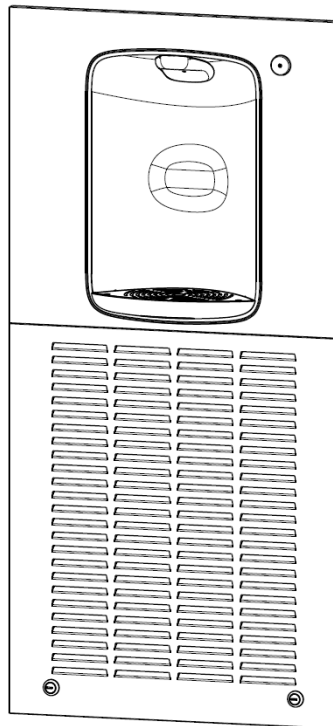
STEP 5: TRIM BEZEL INSTALLATION: For Surface Mount Models Only



- A. Install frame assembly to a flat surface. Use appropriate fastening hardware (not included). Refer to the Rough-In Drawings for correct installation height.
- B. Remove bottom plate from trim bezel (4 screws)
- C. Install trim bezel to frame assembly and replace bottom plate with screws.
- D. Install drain assembly, snap bushings and any other accessories included with this kit.
- E. Complete the installation by following Step 1B, 1C, and Step 2 of the ASSEMBLY INSTRUCTIONS on Page 7.

MWG, MWSM and MG Families of SBF Sport Bottle Fillers

Installation Instructions



P/N 030099-685 Date: 04/2023
© 2023 LVD Acquisition, LLC

Oasis, Aqua Pointe, Versacooler and VersaFiller are registered trademarks of LVD Acquisition, LLC dba Oasis International



OASIS INTERNATIONAL
222 East Campus View Blvd.
Columbus, OH 43235
614-861-1350
www.oasiscoolers.com