

**MOND**  
**3/4" HIGH FLOW THERMOSTATIC TRIM**  
TM.MD.150

**Description**

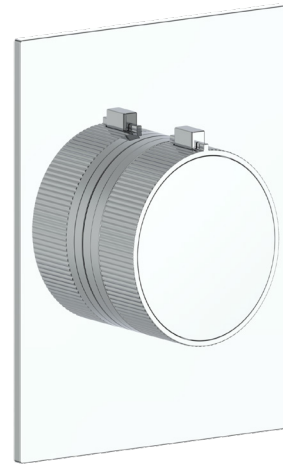
- **TM.MD.150** - 3/4" High flow trim for thermostatic valve
- Volume control or diverter with shut off is required

**Flow Rate**

- 12 gpm | 45 lpm | 60 psi

**Cartridge**

- CE.2300.TT - Thermostatic cartridge



**Available Finishes**

- Chrome (CC)
- Matte Black (MB)
- Brushed Gold (BG)

(Model Pictured: Chrome)

**Codes / Standards**

- Uniform Plumbing Code (UPC®)
- ASME A112.18.1/CSA B125.1

**Warranty**

- Limited lifetime warranty (see full warranty for details)

