

# TECHNICAL SPECIFICATIONS



## C96 SERIES (WPV-C)

Model	BTU	Width	Height	Depth	A.F.U.E
WPV035T2AA-C	35,000	17 ½"	34"	29 ½"	Up to 96.0% Certified through AHRI
WPV050T3AA-C	53,000				
WPV070T3AA-C	70,000				
WPV070T4BA-C	70,000	22 ½"			
WPV090T5BA-C	88,000				
WPV105T5BA-C	105,000				
WPV120T5BA-C	120,000				



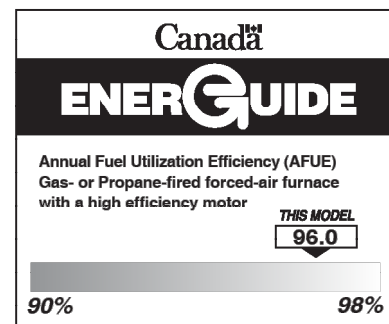
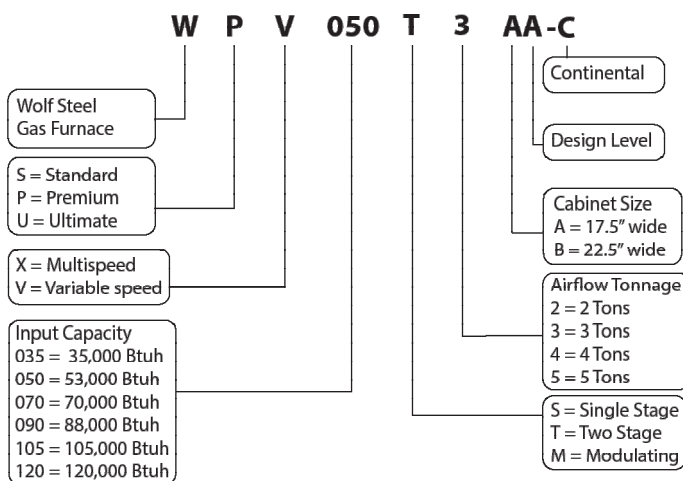
## FEATURES&BENEFITS

The C96 Series High Efficiency Gas Furnace may be installed in four positions, alcove or closet installations that require zero clearance. Certified by CSA for application in Canada and the United States.

- High efficiency variable speed ECM Blower Motor
- T140 Aluminized Wrinkle Bent Primary Heat Exchanger Tubes
- 29-4C Stainless Steel Heat Recovery Coil
- Aluminized Multi-Port In-Shot Burners
- Self Diagnostic Integrated Furnace Control
- Zero clearance in all positions
- Multi-fit: upflow, downflow, horizontal left and horizontal right
- Premium hot surface igniter
- Direct and Single Vent installation approved
- Concentric Venting Approved
- Energy Star rated (except 120kBTU model)
- One Propane Conversion Kit
- Canada: Certified to 4500 ft (1372m)\*
- U.S.A.: Certified to 5400 ft (1646m)\*
- 100% Units factory fired
- Flexible Condensate Trap for easy service
- Clear Front Manifold Cover
- Modular heating and blower section for easy service
- Sealed Vestibule and Blower Compartments for quiet operation
- Low fire is 70% of high fire rate (60% for 120kBTU model)
- High flow rate condensate drain
- Can be used for new construction heat
- Optional UV light installation

\* See rating plate for more information

## MODEL BREAKDOWN



Product information provided is not complete and is subject to change without notice. Please consult the installation manual for the most up to date installation information.

Wolf Steel LTD., 24 Napoleon Rd., Barrie, ON  
L4M 0G8 Canada. Phone 866-820-8686  
www.continentalcomfort.com

W415-3077 / 02.18.22

# C96 SERIES (WPV-C)



## Heating Capacities

C96 SERIES	WPV035T2AA-C	WPV050T3AA-C	WPV070T3AA-C	WPV070T4BA-C	WPV090T5BA-C	WPV105T5BA-C	WPV120T5BA-C
MOTOR	Variable	Variable	Variable	Variable	Variable	Variable	Variable
EFFICIENCY	96.0%	96.0%	96.0%	96.0%	96.0%	96.0%	96.0%
HIGH FIRE INPUT (BTU/HR)	35,000	53,000	70,000	70,000	88,000	105,000	120,000
LOW FIRE OUTPUT (BTU/HR)	24,000	37,000	49,000	49,000	61,000	73,000	72,000

## Airflow Cooling

BLOWER SIZE	112-6RDD	112-8RDD	112-8RDD	112-10RDD	112-10RDD	112-10RDD	112-10RDD
MOTOR SIZE	1/3 HP	1/2 HP	1/2 HP	3/4 HP	1 HP	1 HP	1 HP
AC TONNAGE	1 ½, 2, 2 ½	1½, 2, 2½, 3	1½, 2, 2½, 3	2, 2 ½, 3, 4	2, 2 ½, 3, 4, 5	2 ½, 3, 4, 5	2 ½, 3, 4, 5

## AIR FLOW (CFM)

**TABLE 11A - AIRFLOW (W1-LOW HEAT)**

	WPV035T2AA-C	WPV050T3AA-C	WPV070T3AA-C	WPV070T4BA-C	WPV090T5BA-C	WPV105T5BA-C	WPV120T5BA-C
	ESP: 0.10" WC - 0.50" WC	ESP: 0.12" WC - 0.50" WC	ESP: 0.20" WC - 0.50" WC				
Heat Jumper	CFM						
A (MAX)	395	576	905	748	914	1156	1306
B	N/A						
C	348	504	799	656	802	1018	1068
D	367	535	852	677	836	1069	923

NOTE: For more detailed airflow tables, please see available literature on product website.

**TABLE 11B - AIRFLOW (W2-HIGH HEAT)**

	WPV035T2AA-C	WPV050T3AA-C	WPV070T3AA-C	WPV070T4BA-C	WPV090T5BA-C	WPV105T5BA-C	WPV120T5BA-C
	ESP: 0.10" WC - 0.50" WC	ESP: 0.12" WC - 0.50" WC	ESP: 0.20" WC - 0.50" WC				
Heat Jumper	CFM						
A (MAX)	517	732	1167	972	1206	1526	1833
B	N/A						
C	466	655	1031	872	1083	1374	1588
D	492	679	1099	894	1120	1443	1394

NOTE: For more detailed airflow tables, please see available literature on product website.

**TABLE 11C - AIRFLOW (Y1-LOW COOL)**

	WPV035T2AA-C		WPV050T3AA-C		WPV070T3AA-C		WPV070T4BA-C		WPV090T5BA-C		WPV105T5BA-C		WPV120T5BA-C	
	ESP: 0.10" WC - 0.50" WC		ESP: 0.12" WC - 0.50" WC		ESP: 0.20" WC - 0.50" WC									
Cool Jumper	A/C Ton	CFM	A/C Ton	CFM	A/C Ton	CFM	A/C Ton	CFM	A/C Ton	CFM	A/C Ton	CFM	A/C Ton	CFM
A	2.5	652	3	841	3	873	4	1109	5	1366	5	1366	5	1366
B	2	515	2.5	659	2.5	684	3	815	4	1070	4	1070	4	1070
C	1.5	363	2	528	2	548	2.5	666	3	791	3	791	3	791
D	N/A	N/A	1.5	397	1.5	412	2	540	2.5	666	2.5	666	2.5	666

NOTE: For more detailed airflow tables, please see available literature on product website.

**TABLE 11D - AIRFLOW (Y1-HIGH COOL)**

	WPV035T2AA-C		WPV050T3AA-C		WPV070T3AA-C		WPV070T4BA-C		WPV090T5BA-C		WPV105T5BA-C		WPV105T5BA-C	
	ESP: 0.10" WC - 0.50" WC		ESP: 0.12" WC - 0.50" WC		ESP: 0.20" WC - 0.50" WC									
Cool Jumper	A/C Ton	CFM	A/C Ton	CFM	A/C Ton	CFM	A/C Ton	CFM	A/C Ton	CFM	A/C Ton	CFM	A/C Ton	CFM
A	2.5	988	3	1274	3	1323	4	1680	5	2070	5	2070	5	2070
B	2	781	2.5	999	2.5	1037	3	1235	4	1621	4	1621	4	1621
C	1.5	550	2	800	2	831	2.5	1009	3	1199	3	1199	3	1199
D	N/A	N/A	1.5	601	1.5	624	2	818	2.5	1009	2.5	1009	2.5	1009

NOTE: For more detailed airflow tables, please see available literature on product website.

Refer to Blower Airflow Specification Sheet on the Continental website for more information.

# C96 SERIES (WPV-C)

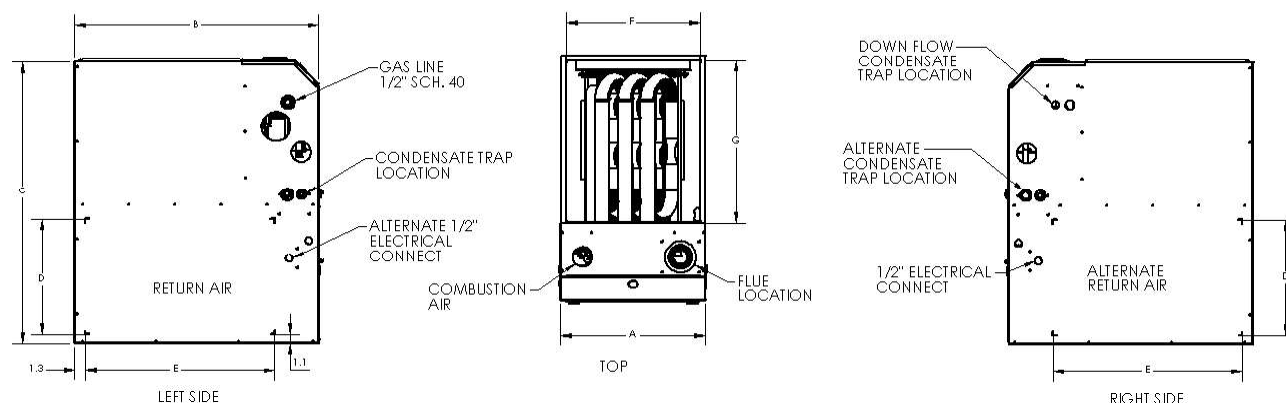


## Cabinet Dimensions

INPUT K/Btu/hr	Width A	Depth B	Height C	Supply Air (F x G)	Return Air (D x E)			
35	17 1/2" (445mm)	29 1/2" (749mm)	34" (864mm)	16 1/4" x 19 5/8" (413mm x 499mm)	14" x 23" (356mm x 584mm)			
50								
70-3								
70-4	22 1/2" (572mm)			21 1/4" x 19 5/8" (540mm x 499mm)				
90								
105								
120*								

**\*NOTE:** If the airflow requirements exceed 1800 cfm, models will require air openings and filters on:

- both sides, OR
- one side and the bottom, OR
- just the bottom



## Venting

In Canada:

Furnace must be vented with ULC S636 PVC manufactured by IPEX, Royal Build Products (GVS-65 & GVS90), M&G Duravent (PPE) or Centrotherm (InnoFlue®).

In United States:

- Schedule 40 PVC, ASTM D1785 or CSA B137.3
- PVC-DWV, ASTM D2665 or CSA B181.2
- Schedule 40 CPVC, ASTM F441 or CSA 137.6
- PVC Primer and Solvent Cement: ASTM D2564
- PPE ULC S636 manufactured by M&G Duravent - must terminate using 45 and 90 degree elbows, or a tee.

EQUIVALENTS:

Short Radius Elbow = 7 ft (2.13m)

Standard Radius Elbow = 5 ft (1.52m)

Long Radius Elbow = 3 ft (0.91m)

45 Degree Elbow = 2.5 ft (0.76m)

Tee

Vent lengths that require more than 6-90° elbows, add listed equivalents for every elbow up to the maximum allowable vent length.

## Warranty

### **PRESIDENT'S LIMITED WARRANTY (Registered)**

To the original registered owner and his or her spouse ("owner"), the **HEAT EXCHANGER\*** is warranted for the owner's **LIFETIME** or so long as the owner owns the home in which the unit was originally installed, and **all remaining parts** as warranted for a period of **10 YEARS**, except as provided below. These warranties apply only if:

- The unit is installed in an owner-occupied, primary single family residence, and
- The unit is properly registered with Continental® online within 60 days after the original installation. To register, go to [www.continentalheatingandcooling.com](http://www.continentalheatingandcooling.com). Some states and provinces do not allow limitations on how long an implied limited warranty lasts or do not allow the exclusion or limitation of incidental or consequential damages, so the above limitation or exclusion may not apply to you. This limited warranty gives you specific legal rights, and you may also have other rights which vary by jurisdiction.

With respect to the Heat Exchanger, if the heat exchanger fails within:

- the first 10 years for C95 / C96 Series
- the first 15 years for C97 Series

Continental® will, at its discretion, provide a new equivalent gas furnace. After the 10 years (15 years - C97 Series), Continental® may choose to credit its prorated wholesale value towards the purchase of a new Continental® furnace.

OR

### **LIMITED WARRANTY (Not Registered)**

If not registered within 60 days, the **HEAT EXCHANGER** is warranted for a period of **20 YEARS** (pro rated), and all remaining parts are warranted for a period of **5 YEARS**, all other limitations apply.

With respect to the heat exchanger, Continental® at its discretion, after 5 years may choose to provide a credit towards a replacement Continental® gas furnace.