



Oversized **XXS → 3XL** **400 GSM**

Set-in sleeve
Neck collar in self fabric
Herringbone tape at inside back neck and at inside of zipper
Quarter zip at center front
2x1 rib at sleeve hem and bottom hem
Armhole, sleeve hem and bottom hem with twin needle topstitch

Shell - French Terry
100% Cotton - Organic Ring Spun Carded - 400.0 GSM
Dry Handfeel

Wash similar colours together, do not iron on print, wash and iron inside out. Close zip before washing.



Weaving : Bangladesh
Dyeing : Bangladesh
Assembly : Bangladesh

Colors



Black
C002



Desert
Dust
C028



Aloe
C089



French
Navy
C727



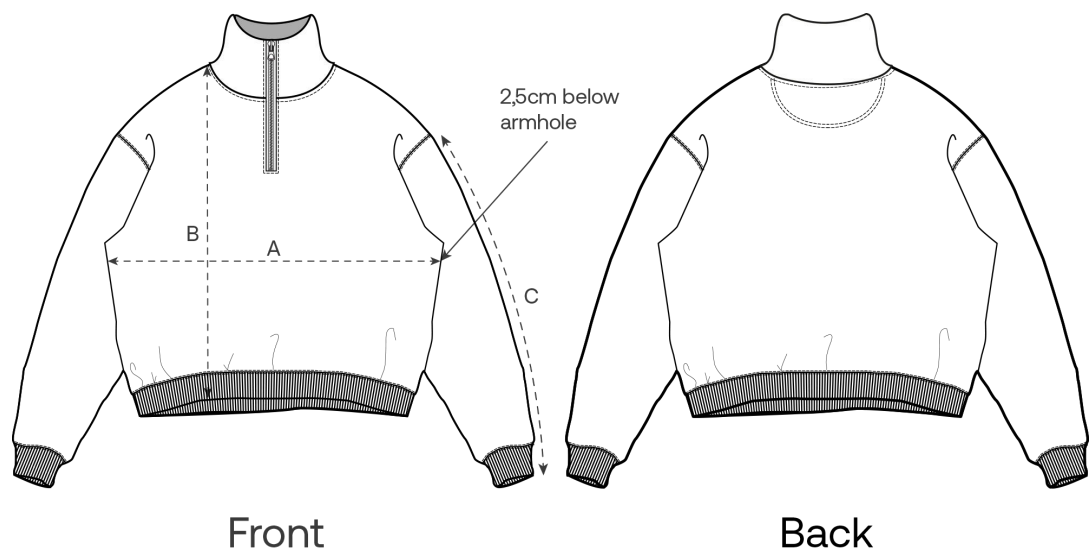
Red Earth
C086

Essential Heathers



Heather
Grey
C250

Size Guide



Measurement in cm	XXS	XS	S	M	L	XL	XXL	3XL
A - Half Chest	56.5	59	61.5	64	67	70	73	76
B - Body Length	61	63	68	72	74	76	78	80
C - Sleeve Length	56.5	57.5	61.5	63	64.5	66	67.5	67.5

Packing

Sizes	XXS	XS	S	M	L	XL	XXL	3XL
Pieces / bag	5	5	5	5	5	5	5	5
Pieces / box	10	20	20	20	20	20	20	10

Environmental impact

Please note that the table below shows data for an adult in size M.

Carbon emission in Kg CO2eq	Natural Raw	Eco-heather	Whites & Colours	Heathers*
From cradle to gate ¹	-	-	8.31	8.43
From cradle to grave ²	-	-	10.95	11.06

Water usage in m³	Natural Raw	Eco-heather	Whites & Colours	Heathers*
From cradle to gate ¹	-	-	4.19	4.49
From cradle to grave ²	-	-	5.98	6.27

1 - From the extraction of raw materials to the point it leaves the manufacturer. 2 - From the extraction of raw materials to the product end-of-life. * Except Heather Haze