



Damen ärmellose Fleece-Jacke

Fitted XS → XXL 300 GSM

Description

- Sleeveless
- Elastic binding at neck edge, armhole and hem
- Inside back neck grosgrain loop
- Nylon coil zipper with metal puller and cord ending
- Brushed fabric with Anti piling finish on inside and outside
- Front side welt pockets with zip opening
- Inside back neck tape in recycled polyester

Composition

Shell - Polar Fleece  
100% recyceltes Polyester - 300.0 GSM  
Brushed

Care instruction

Wash similar colours together. No ironing. Close all snaps before washing. Line dry.



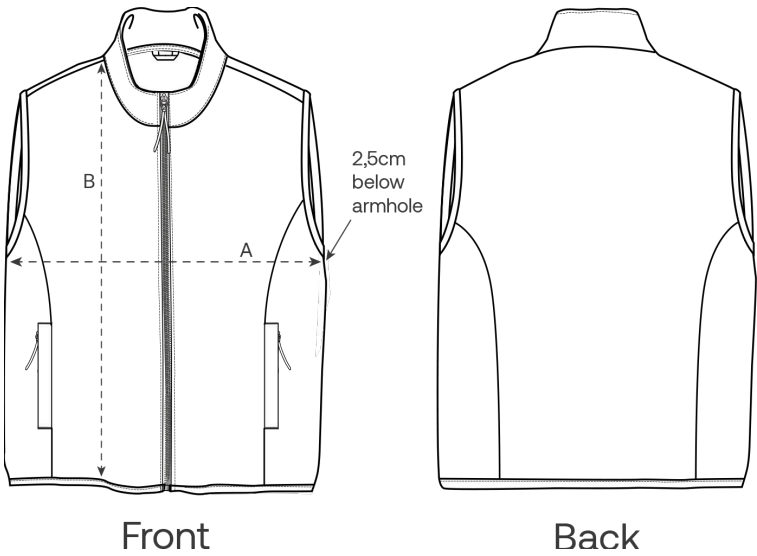
Herkunftsland

Weaving : China  
Dyeing : China  
Assembly : Bangladesh

Colors



Größenführer



Measurement in cm	XS	S	M	L	XL	XXL
A - Half Chest	45	48	51	54	58	62
B - Body Length	59	62	64	66	68	70

Verpackung

Sizes	XS	S	M	L	XL	XXL
Pieces / bag	5	5	5	5	5	5
Pieces / box	15	15	15	15	15	15