



The women's body warmer

Fitted XS → 3XL\* 38 GSM

Description

- Sleeveless
- High collar
- Reverse nylon zip at center front
- Zippered welt pockets with extra grosgrain puller
- Elastic tape binding at armhole
- Fully quilted
- Side panels for better shape
- Inside seams with binding finish
- Bottom hem with adjustable plastic stopper and elastic cord

Composition

- Shell - Plain Weave
- 100% Nylon - Recycled - 38.0 GSM
- Durable water repellent, Fluorine-free DWR
- Padding
- 100% Polyester - Recycled -
- Lining - Plain Weave
- 100% Nylon - Recycled - 38
- Durable water repellent, Fluorine-free DWR

Care instruction

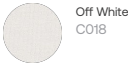
Wash similar colours together, no ironing on print, wash and iron inside out.



Country of origin

- Weaving : China
- Dyeing : China
- Assembly : Bangladesh

Whites



Colors



Black  
C002



Desert  
Dust  
C028



Anthracite  
C253



Red Brown  
C116



Khaki  
C223



Mindful  
Blue  
C729



Stargazer  
C702



French  
Navy  
C727

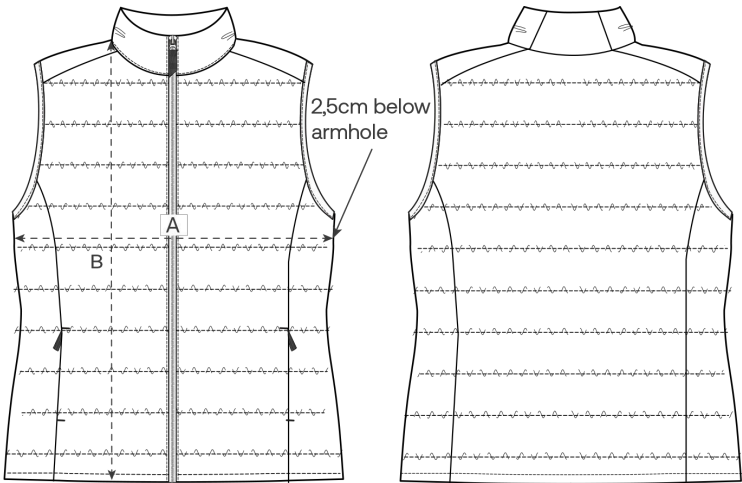


Lavender  
C063



Red  
C004

Size Guide



Front

Back

Measurement in cm	XS	S	M	L	XL	XXL	3XL
A - Half Chest	47	50	53	56	59	62	66
B - Body Length	58	60	62	64	66	68	70

Packing

Sizes	XS	S	M	L	XL	XXL
Pieces / bag	5	5	5	5	5	5
Pieces / box	10	10	10	10	10	10