



The Women's fleece jacket

Fitted XS > XXL 300 GSM

Details

- Set in sleeves
- Elastic binding at neck edge, cuffs and hem
- Inside back neck grosgrain loop
- Nylon coil zipper with metal puller and cord ending
- Brushed fabric with Anti piling finish on inside and outside
- Front side welt pockets with zip opening
- Inside back neck tape in recycled polyester

Composition

Shell - Polar Fleece  
100% Polyester - Recycled - , 300.0 GSM  
Brushed

Care

Wash similar colours together. No ironing. Close all snaps before washing. Line dry.



Country of origin

Weaving : China  
Dyeing : China  
Assembly : Bangladesh



Made with 100% GRS recycled polyester  
Certified by Control Union  
P17/00524



STANDARD 100

1112055  
Centexbel

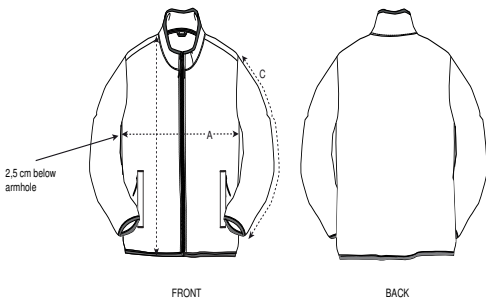
www.oeko-tex.com



Colors



Size Guide



Sizes		XS	S	M	L	XL	XXL
A	Half Chest	47	50	53	56	60	64
B	Body Length	61	64	66	68	70	72
C	Sleeve Length	59.5	61	62.5	64	65.5	65.5

Packing

Sizes		XS	S	M	L	XL	XXL
Pieces/bag		5	5	5	5	5	5
Pieces/box		10	10	10	10	10	10