



The wool-like women's body warmer

Fitted XS > XXL 140 GSM

Details

- Sleeveless
- High collar
- Reverse nylon zip at center front
- Zipped welt pockets with extra grosgrain puller
- Elastic tape binding at armhole
- Fully quilted
- Side panels for better shape
- Inside seams with binding finish
- Bottom hem with adjustable plastic stopper and elastic cord

Composition

Shell - Plain Weave Brushed
100% Polyester - Recycled - , 140.0 GSM
Fluorine-free DWR
Padding
100% Polyester - Recycled -

Lining - Plain Weave
100% Polyester - Recycled
Fluorine-free DWR

Care

Wash similar colours together, no ironing, wash inside out. Close all zips before washing.



Country of origin

Weaving : China
Dyeing : China
Assembly : China

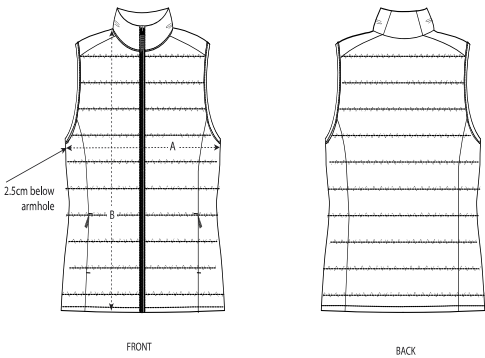


www.oeko-tex.com

Essential Heathers



Size Guide



Sizes		XS	S	M	L	XL	XXL
A	Half Chest	47	50	53	56	59	62
B	Body Length	58	60	62	64	66	68

Packing

Sizes		XS	S	M	L	XL	XXL
Pieces/bag		5	5	5	5	5	5
Pieces/box		10	10	10	10	10	10