



The Men's Mid-light Polo

Fitted

S → 5XL*

185 GSM

Description

- Set-in sleeve
- Flat knit rib on collar and sleeve hem
- Inside heavy single jersey back neck tape
- Front inserted placket with 2 buttons in matching body colour
- Slit and bartack finish at side seam hem
- Single needle topstitch at shoulder seams
- Bottom hem with narrow double needle topstitch

Composition

Shell - Piqué
100% Cotton - Organic Ring Spun Combed - 185.0 GSM
Panel washed

Care instruction

Wash similar colours together, no ironing on print, wash and iron inside out.



Country of origin

Weaving : Bangladesh
Dyeing : Bangladesh
Assembly : Bangladesh

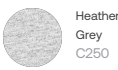
Whites



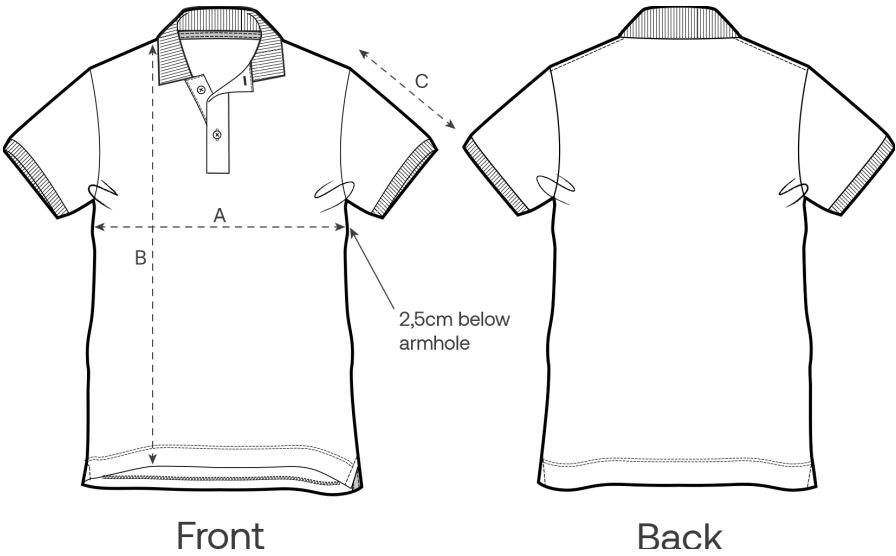
Colors



Essential Heathers



Size Guide



Measurement in cm	S	M	L	XL	XXL	3XL	4XL	5XL
A - Half Chest	48	51	54	57	61	65	70	75
B - Body Length	70	72	74	76	78	80	82	83
C - Sleeve Length	21	21.5	22	22.5	23	23.5	23.5	23.5

Packing

Sizes	S	M	L	XL	XXL	3XL	4XL	5XL
Pieces / bag	5	5	5	5	5	5	5	5
Pieces / box	50	50	50	50	50	25	25	25