



The Women's Mid-light Polo

Fitted XS > 3XL* 185 GSM

Details

- Set-in sleeve
- Flat knit rib on collar and sleeve hem
- Inside heavy single jersey back neck tape
- Front inserted placket with 2 buttons in matching body colour
- Slit and bartack finish at side seam hem
- Single needle topstitch at shoulder seams
- Bottom hem with narrow double needle topstitch

Composition

Shell - Piqué
100% Cotton - Organic Ring Spun Combed - , 185.0 GSM
Panel washed

Care

Wash similar colours together, no ironing on print, wash and iron inside out.

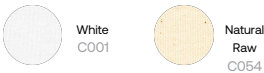


Country of origin

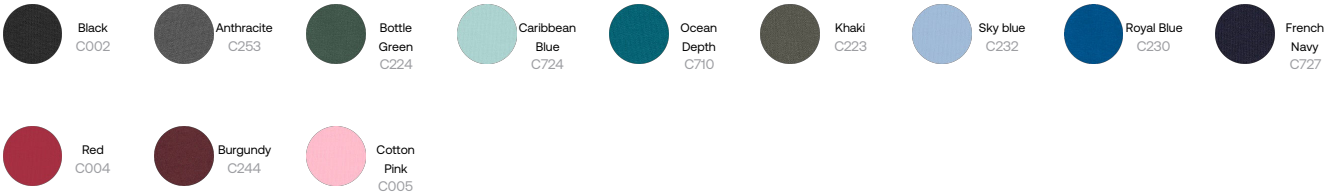
Weaving : Bangladesh
Dyeing : Bangladesh
Assembly : Bangladesh



Whites



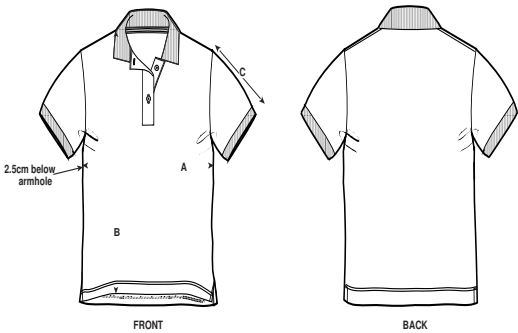
Colors



Essential Heathers



Size Guide



Sizes	XS	S	M	L	XL	XXL	3XL
A Half Chest	42	45	48	51	55	59	63
B Body Length	60	62	64	66	68	70	72
C Sleeve Length	18.5	19	19.5	20	20.5	21	21.5

Packing

Sizes	XS	S	M	L	XL	XXL	3XL
Pieces/bag	5	5	5	5	5	5	
Pieces/box	50	50	50	50	50	50	