



The iconic kids' crew neck sweatshirt

Medium Fit	3-4/98-104cm → 12-13/152-158cm	300 GSM
------------	--------------------------------	---------

Description

- Set-in sleeve
- 1x1 rib at neck collar, sleeve hem and bottom hem
- Inside back neck tape in single jersey
- Self fabric Half moon at back neck with 3 mm twin needle
- Single needle topstitch at neck collar
- 2 needle topstitch centered on seam at hem, cuff and armhole

Composition

Shell - Brushed
100% Cotton - Organic Ring Spun Combed - 300.0 GSM
Panel washed

Care instruction

Wash similar colours together, no ironing on print, wash and iron inside out.



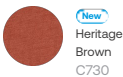
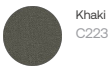
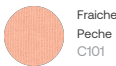
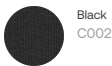
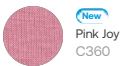
Country of origin

Weaving : Bangladesh
Dyeing : Bangladesh
Assembly : Bangladesh

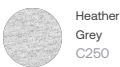
Whites



Colors



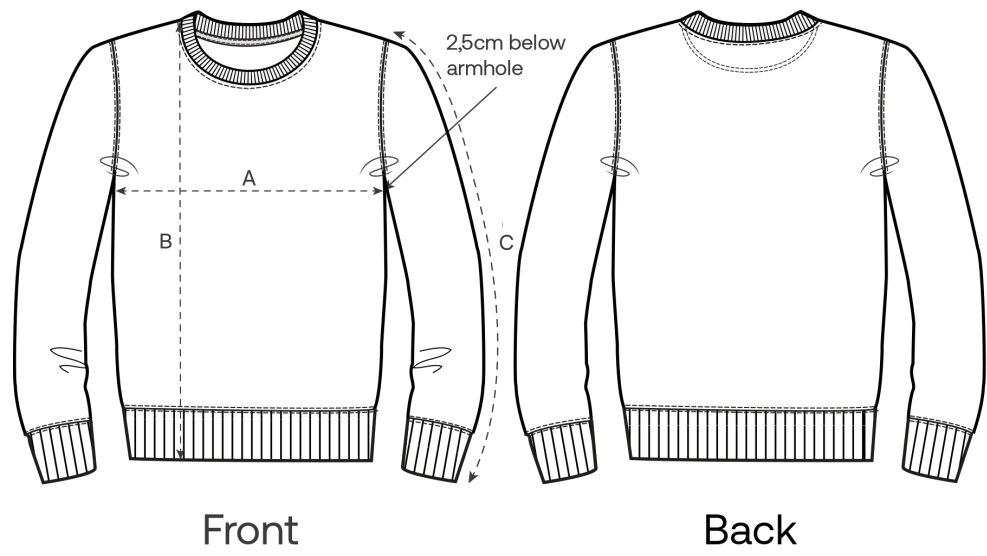
Essential Heathers



Special Heathers



Size Guide



Measurement in cm	3-4/98-104cm	5-6/110-116cm	7-8/122-128cm	9-11/134-146cm	12-13/152-158cm
A - Half Chest	38	40	42	46	50
B - Body Length	43	46	52	59	66
C - Sleeve Length	32	37.5	43.5	50.5	57.5

Packing

Sizes	3-4/98-104cm	5-6/110-116cm	7-8/122-128cm	9-11/134-146cm	12-13/152-158cm
Pieces / bag	5	5	5	5	5
Pieces / box	20	20	20	20	20

Product environmental impact

Carbon emission in Kg CO2eq	Natural Raw	Eco-heather	Whites & Colours	Heathers*
From cradle to gate ¹	3.2	3.33	4.44	4.16
From cradle to grave ²	4.26	4.39	5.5	5.22

Water usage in m³	Natural Raw	Eco-heather	Whites & Colours	Heathers*
From cradle to gate ¹	0.03	0.03	0.06	0.05
From cradle to grave ²	0.06	0.06	0.09	0.08

Please note that the following figures are calculated based on a product in size L for adults and size 9-11 years for children.

1 - From the extraction of raw materials to the point it leaves the manufacturer. 2 - From the extraction of raw materials to the product end-of-life. * Except Heather Haze