



The men's quarter zip sweatshirt

Fitted XS > XXL 300 GSM

Details

- Set-in sleeve
- Neck collar in self fabric
- Inside herringbone back neck tape
- Self fabric half moon at back neck
- Quarter zip at center front with inside facing
- 1x1 rib at sleeve hem and bottom hem
- Armhole, sleeve hem and bottom hem with twin needle topstitch

Composition

Shell - Brushed
85% Cotton - Organic Ring Spun Combed, 15% Polyester - Recycled - , 300.0 GSM
Fabric washed, Light sueded

Care

Wash similar colours together, do not iron on print, wash and iron inside out. Close zip before washing.



Country of origin

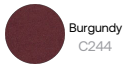
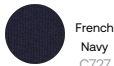
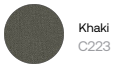
Weaving : Bangladesh
Dyeing : Bangladesh
Assembly : Bangladesh



Whites



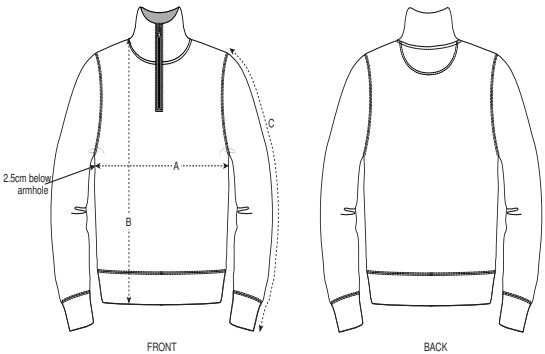
Colors



Essential Heathers



Size Guide



Sizes		XS	S	M	L	XL	XXL
A	Half Chest	48	50.5	53	56	59	62
B	Body Length	68	70	72	74	76	78
C	Sleeve Length	63	64.5	66	67.5	69	70.5

Packing

Sizes		XS	S	M	L	XL	XXL
Pieces/bag		5	5	5	5	5	5
Pieces/box		20	20	20	20	20	20