



**Medium Fit**                      **XXS → 3XL**                      **300 GSM**

- Set-in sleeve
- Double layered hood in self fabric
- Round drawcords in matching body colour with closed metal tipping
- Metal eyelets
- Inside herringbone back neck tape
- Self fabric half moon at back neck
- 1x1 rib at sleeve hem and bottom hem
- Armhole, sleeve hem and bottom hem with twin needle topstitch
- Kangaroo pocket at front

Shell - French Terry  
85% Cotton - Organic Ring Spun Combed, 15% Polyester - Recycled - 300.0 GSM  
Fabric washed, Light sueded

Wash similar colours together, no ironing on print, wash and iron inside out.



Weaving : Bangladesh  
Dyeing : Bangladesh  
Assembly : Bangladesh

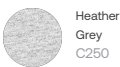
Whites



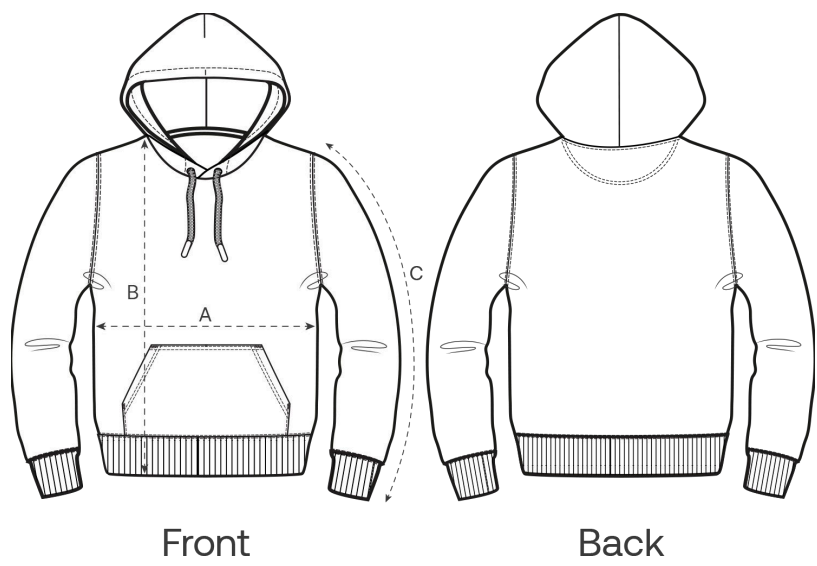
Colors



Essential Heathers



Size Guide



Measurement in cm	XXS	XS	S	M	L	XL	XXL	3XL
A - Half Chest	46	49	52	55	58	61	64	67
B - Body Length	60.5	62.5	68	72	74	76	78	80
C - Sleeve Length	57	59	62.5	65	68.5	69	69.5	70

Packing

Sizes	XXS	XS	S	M	L	XL	XXL	3XL
Pieces / bag	5	5	5	5	5	5	5	5
Pieces / box	10	20	20	20	20	20	20	10