



Relaxed Fit **XXS → 3XL** **280 GSM**

- Set-in sleeves
- Self fabric lined hood
- 1x1 rib at sleeve cuff and hem
- Kangaroo pocket
- Inside back neck herringbone tape
- Half moon at back neck

Shell - Brushed
85% Cotton - Organic Ring Spun Combed, 15% Polyester - Recycled - 280.0 GSM
Fabric washed

Wash similar colours together, no ironing on print, wash and iron inside out.

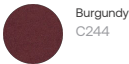
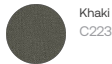


Weaving : Bangladesh
Dyeing : Bangladesh
Assembly : Bangladesh

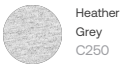
Whites



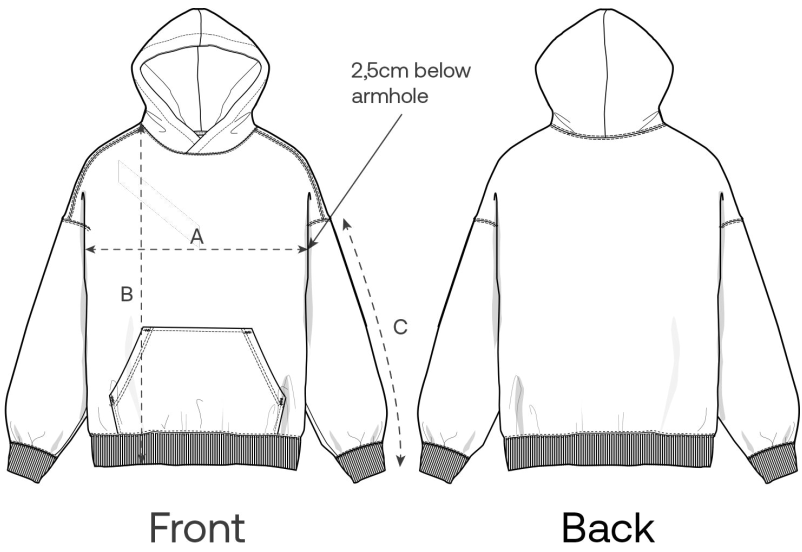
Colors



Essential Heathers



Size Guide



Measurement in cm	XXS	XS	S	M	L	XL	XXL	3XL
A - Half Chest	53	55	57	61	64	67	71	75
B - Body Length	58	61	65	69	71	73	73	75
C - Sleeve Length	50.5	52.5	56.5	58.5	60.5	61	61.5	61.5

Packing

Sizes	XXS	XS	S	M	L	XL	XXL	3XL
Pieces / bag	5	5	5	5	5	5	5	5
Pieces / box	10	20	20	20	20	20	20	10