



## The iconic unisex hoodie sweatshirt

<b>Medium Fit</b>	<b>XXS → 5XL*</b>	<b>350 GSM</b>
-------------------	-------------------	----------------

### Description

- Set-in sleeve
- Double self fabric lined hood
- Round drawcords in matching body colour
- Closed end metal tipping and metal eyelets
- Herringbone tape at inside back neck seam
- Self fabric half moon at back neck
- 2 needle topstitch centred on seam at hem, cuff and armhole
- 1x1 rib at sleeve hem and bottom hem
- Kangaroo pocket at front

### Composition

Shell - Brushed  
 100% Cotton - Organic Ring Spun Combed / Heather Haze : 80% Organic Cotton - 20% Recycled Cotton, Ring Spun Combed - 350.0 GSM  
 Fabric washed

### Care instruction

Wash similar colours together, no ironing on print, wash and iron inside out.



### Country of origin

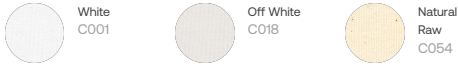
Weaving : Bangladesh  
 Dyeing : Bangladesh  
 Assembly : Bangladesh



### Certification information

All colours are GOTS certified except for Heather Haze, which is GRS certified.

Whites



Colors



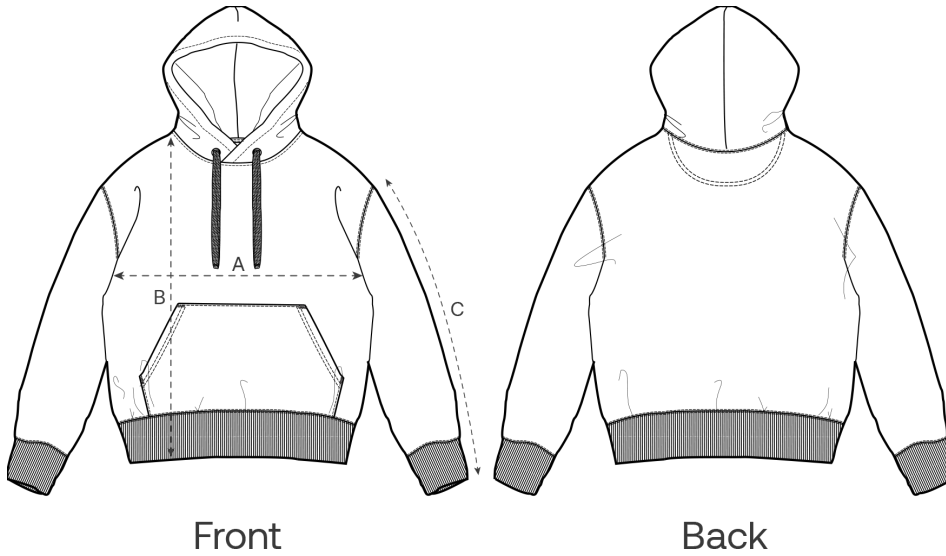
Essential Heathers



Special Heathers



Size Guide



Measurement in cm	XXS	XS	S	M	L	XL	XXL	3XL	4XL	5XL
A - Half Chest	51	53	55	59	62	65	69	73	78	83
B - Body Length	64	67	71	74	76	78	80	82	84	85
C - Sleeve Length	58.5	60.5	64.5	66.5	68.5	69	69.5	69.5	69.5	69.5

Packing

Sizes	XXS	XS	S	M	L	XL	XXL	3XL	4XL	5XL
Pieces / bag	5	5	5	5	5	5	5	5	5	5
Pieces / box	10	20	20	20	20	20	20	10	10	10

Product environmental impact

Carbon emission in Kg CO2eq	Natural Raw	Eco-heather	Whites & Colours	Heathers*
From cradle to gate <sup>1</sup>	8.3	8.65	11.08	11.34
From cradle to grave <sup>2</sup>	12.56	12.91	15.33	15.59

Water usage in m <sup>3</sup>	Natural Raw	Eco-heather	Whites & Colours	Heathers*
From cradle to gate <sup>1</sup>	0.05	0.07	0.12	0.12
From cradle to grave <sup>2</sup>	0.15	0.17	0.21	0.22

Please note that the following figures are calculated based on a product in size L for adults and size 9-11 years for children.

1 - From the extraction of raw materials to the point it leaves the manufacturer. 2 - From the extraction of raw materials to the product end-of-life. \* Except Heather Haze