



**Medium Fit**                      **XXS → 5XL\***                      **350 GSM**

- Set-in sleeve
- Double self fabric lined hood
- Round drawcords in matching body colour
- Closed end metal tipping and metal eyelets
- Herringbone tape at inside back neck seam
- Self fabric half moon at back neck
- 2 needle topstitch centred on seam at hem, cuff and armhole
- 1x1 rib at sleeve hem and bottom hem
- Kangaroo pocket at front
- Exposed metal zip at centre front

Shell - Brushed  
100% Cotton - Organic Ring Spun Combed - 350.0 GSM  
Fabric washed

Wash similar colours together, no ironing on print, wash and iron inside out.



Weaving : Bangladesh  
Dyeing : Bangladesh  
Assembly : Bangladesh

Whites



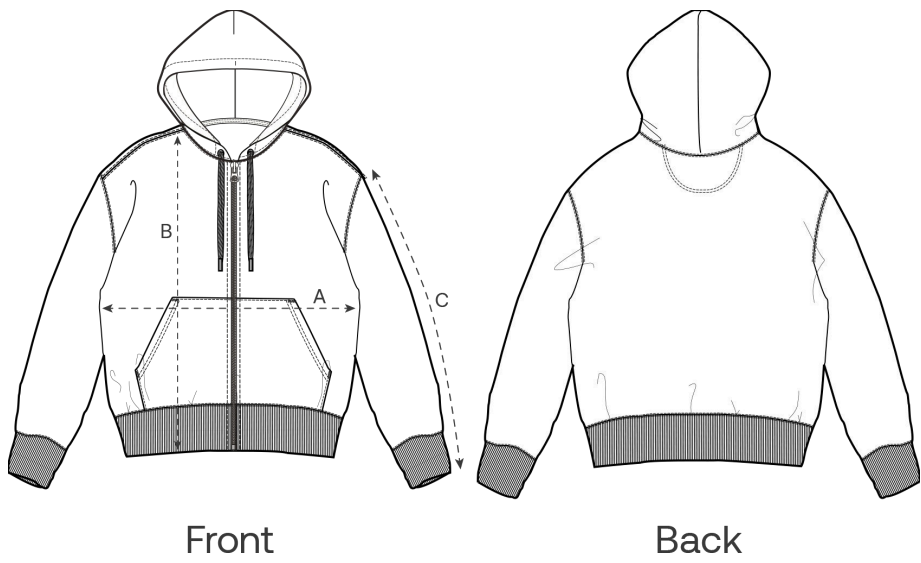
Colors



Essential Heathers



Size Guide



Measurement in cm	XXS	XS	S	M	L	XL	XXL	3XL	4XL	5XL
A - Half Chest	51	53	55	59	62	65	69	73	78	81
B - Body Length	64	67	71	74	76	78	80	82	84	85
C - Sleeve Length	58.5	60.5	64.5	66.5	68.5	69	69.5	69.5	69.5	69.5

Packing

Sizes	XXS	XS	S	M	L	XL	XXL	3XL	4XL	5XL
Pieces / bag	5	5	5	5	5	5	5	5	5	5
Pieces / box	10	20	20	20	20	20	20	10	10	10

Product environmental impact

Carbon emission in Kg CO2eq	Natural Raw	Eco-heather	Whites & Colours	Heathers*
From cradle to gate <sup>1</sup>	7.84	-	10.37	10.77
From cradle to grave <sup>2</sup>	12.1	-	14.62	15.03

Water usage in m³	Natural Raw	Eco-heather	Whites & Colours	Heathers*
From cradle to gate <sup>1</sup>	0.05	-	0.13	0.12
From cradle to grave <sup>2</sup>	0.15	-	0.22	0.21

Please note that the following figures are calculated based on a product in size L for adults and size 9-11 years for children.

1 - From the extraction of raw materials to the point it leaves the manufacturer.    2 - From the extraction of raw materials to the product end-of-life.    \* Except Heather Haze