



## The Unisex Side Pocket Hoodie Sweatshirt

Medium Fit

XXS → 3XL

280 GSM

### Description

- Set-in sleeves
- Self fabric lined hood
- Flat drawcords in matching body colour
- Embroidered buttonhole eyelets
- 1x1 rib at sleeves cuffs and bottom hem
- Slanted side seam with pockets
- 3 needles flatlock stitches on all seams
- Herringbone tape at inside back neck seam and inside of zipper
- Self fabric half moon at back neck

### Composition

Shell - Brushed  
85% Cotton - Organic Ring Spun Combed, 15% Polyester - Recycled - 280.0 GSM  
Fabric washed

### Care instruction

Wash similar colours together, no ironing on print, wash and iron inside out.



### Country of origin

Weaving : Bangladesh  
Dyeing : Bangladesh  
Assembly : Bangladesh

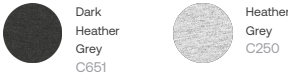
Whites



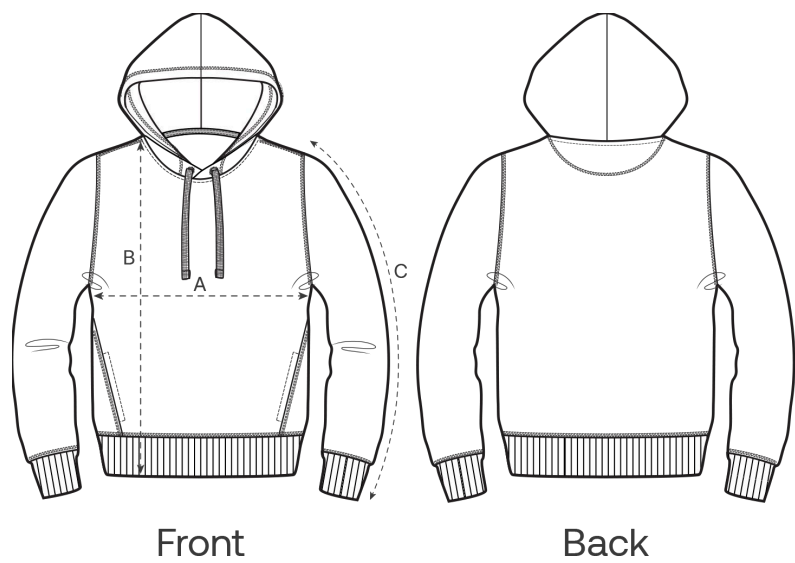
Colors



Essential Heathers



Size Guide



Measurement in cm	XXS	XS	S	M	L	XL	XXL	3XL
A - Half Chest	46	48	50	54	57	60	64	68
B - Body Length	59	62	66	70	72	74	76	78
C - Sleeve Length	56.5	58.5	63	65.5	67.5	68	68.5	68.5

Packing

Sizes	XXS	XS	S	M	L	XL	XXL	3XL
Pieces / bag	5	5	5	5	5	5	5	5
Pieces / box	10	20	20	20	20	20	20	10