



The women's hoodie sweatshirt

Medium Fit XS → XXL 300 GSM

Description

- Set-in sleeves
- Dropped shoulders
- Double layered hood in self fabric
- Flat drawcord in matching body colour
- Embroidered eyelet
- 1X1 ribs at collar, sleeves cuffs and bottom hem
- 2 needles topstitches on all seams
- Inside gros grain back neck tape
- Self fabric halfmoon at back neck

Composition

Shell - Brushed
100% Cotton - Organic Ring Spun Combed / Heather Haze : 80% Organic Cotton - 20% Recycled Cotton, Ring Spun Combed - 300.0 GSM
Fabric washed

Care instruction

Wash similar colours together, no ironing on print, wash and iron inside out.



Country of origin

Weaving : Bangladesh
Dyeing : Bangladesh
Assembly : Bangladesh

Certification information

All colours are GOTS certified except for Heather Haze, which is GRS certified.



Whites



Colors



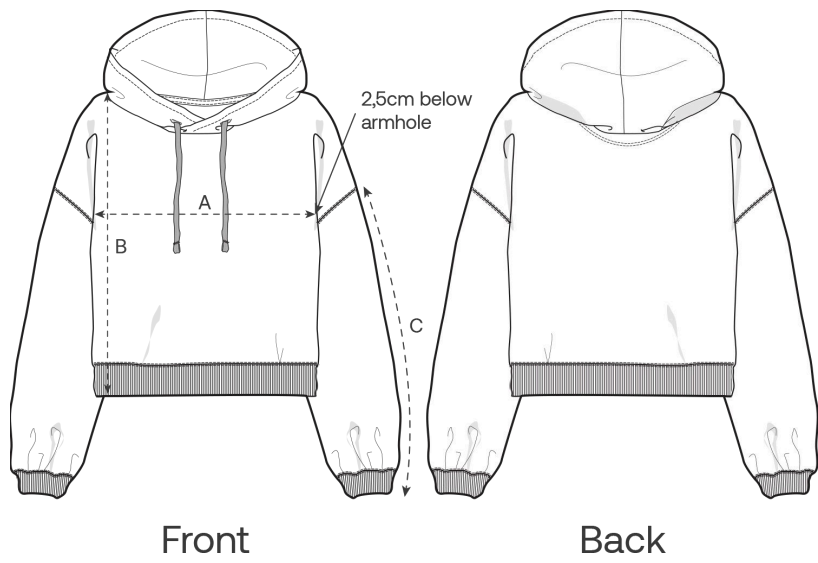
Essential Heathers



Special Heathers



Size Guide



Measurement in cm	XS	S	M	L	XL	XXL
A - Half Chest	57	60	63	66	69	73
B - Body Length	54	57	59	61	63	65
C - Sleeve Length	46	47.5	49	50.5	52	52

Packing

Sizes	XS	S	M	L	XL	XXL
Pieces / bag	5	5	5	5	5	5
Pieces / box	20	20	20	20	20	20