



The women's hoodie in recycled cotton

Medium Fit XS → 3XL 350 GSM

Description

- Double-layered hood in self-fabric
- Round drawcord in matching colour with closed-end metal tipping
- Tipping made from 65% recycled metal
- Embroidered eyelets
- Herringbone back neck tape
- Self-fabric half-moon at back neck
- Set-in sleeves
- Kangaroo pocket
- 1x1 rib at sleeve cuffs and hem
- Twin-needle topstitching at sleeve cuffs and hem

Composition

- Shell - Brushed
- 50% Cotton - Recycled Ring Spun Carded, 50% Cotton - Organic Ring Spun Carded
- 350.0 GSM
- Fabric washed

Care instruction

Wash similar colours together, no ironing on print, wash and iron inside out.



Country of origin

- Weaving : Bangladesh
- Dyeing : Bangladesh
- Assembly : Bangladesh

Whites



White
C001



Natural
Raw
C054

Colors



Black
C002



French
Navy
C727



Cotton Pink
C005



Burgundy
C244



Red
C004



Worker
Blue
C088



Stargazer
C702



Glazed
Green
C036



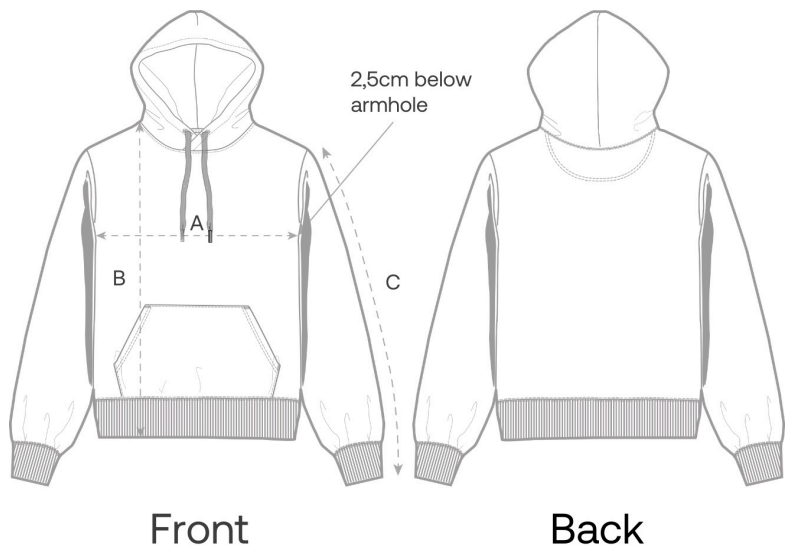
Anthracite
C253

Essential Heathers



Heather
Grey
C250

Size Guide



Measurement in cm	XS	S	M	L	XL	XXL	3XL
A - Half Chest	47	50	53	56	59	63	67
B - Body Length	61	64	66	68	70	72	74
C - Sleeve Length	59.5	61	62.5	64	65.5	65.5	65.5

Packing

Sizes	XS	S	M	L	XL	XXL	3XL
Pieces / bag	5	5	5	5	5	5	5
Pieces / box	20	20	20	20	20	20	10