



300 GSM

- Set-in sleeve
- 1x1 rib at neck collar, sleeve hem and bottom hem
- Inside herringbone back tape
- Self fabric half moon at back neck
- Twin needle topstitch on all seams

Shell - French Terry
85% Cotton - Organic Ring Spun Combed, 15% Polyester - Recycled - , 300.0 GSM
Fabric washed, Light sueded

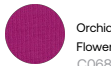
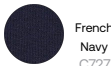
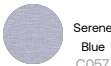
Weaving : Bangladesh
Dyeing : Bangladesh
Assembly : Bangladesh



Whites



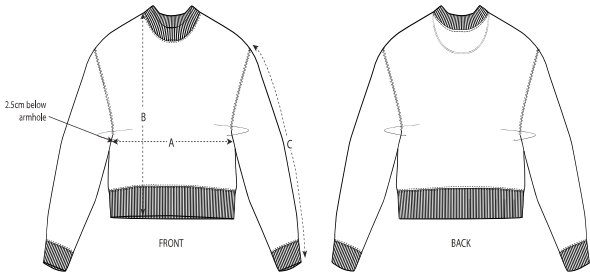
Colors



Essential Heathers



Size Guide



Sizes		XS	S	M	L	XL	XXL
A	Half Chest	47.5	50	53	56	59	62
B	Body Length	49.5	51.5	53.5	55.5	56.5	57.5
C	Sleeve Length	50	50	51	51.5	52	52

Packing

Sizes		XS	S	M	L	XL	XXL
Pieces/bag		5	5	5	5	5	5
Pieces/box		20	20	20	20	20	20