



The unisex dry handfeel and heavy weight t-shirt

Relaxed Fit

XXS > 3XL

240 GSM

Details

- Set-in sleeve
- 1x1 rib at neck collar
- Inside back neck tape in self fabric
- Sleeve hem and bottom hem with wide double needle topstitch
- Slightly rougher fabric characteristic

Composition

Shell - Single Jersey
100% Cotton - Organic Open End / Heather Haze : 70% Organic Cotton - 30%
Recycled Cotton, Open End - , 240.0 GSM
Fabric washed

Care

Wash similar colours together, no ironing on print, wash and iron inside out.



Country of origin

Weaving : Bangladesh
Dyeing : Bangladesh
Assembly : Bangladesh



Certification information

All colours are GOTS certified except for Heather Haze, which is GRS certified.

Whites



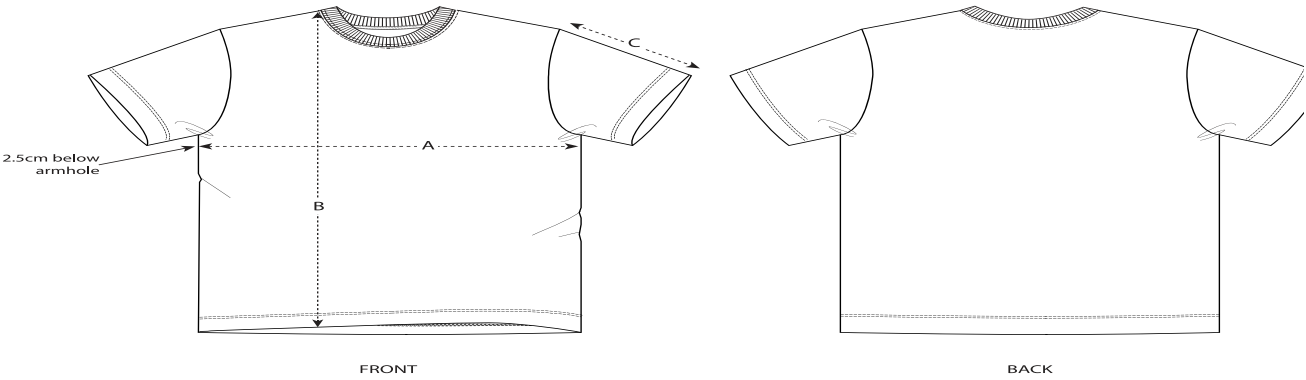
Colors



Essential Heathers



Size Guide



| Sizes | XXS | XS | S | M | L | XL | XXL | 3XL |
|-----------------|------|----|----|----|----|----|-----|-----|
| A Half Chest | 49.5 | 52 | 55 | 58 | 61 | 64 | 67 | 70 |
| B Body Length | 68 | 70 | 73 | 76 | 78 | 80 | 82 | 84 |
| C Sleeve Length | 22.5 | 23 | 24 | 25 | 26 | 26 | 27 | 28 |

Packing

| Sizes | XXS | XS | S | M | L | XL | XXL | 3XL |
|------------|-----|----|----|----|----|----|-----|-----|
| Pieces/bag | 5 | 5 | 5 | 5 | 5 | 5 | 5 | 5 |
| Pieces/box | 50 | 50 | 50 | 50 | 50 | 50 | 50 | 50 |