



The women's oversized rolled sleeve t-shirt

Oversized XS > XXL 155 GSM

Details

- Dolman sleeve
- 1x1 rib at neck collar
- Inside back neck tape in self fabric
- Sleeve cuff folded with bartacks
- Round bottom hem with wide double needle topstitch (back length longer than front length)

Composition

Shell - Single Jersey  
100% Cotton - Organic Ring Spun Combed - , 155.0 GSM  
Fabric washed

Care

Wash similar colours together, no ironing on print, wash and iron inside out.



Country of origin

Weaving : Bangladesh  
Dyeing : Bangladesh  
Assembly : Bangladesh



Whites



Colors



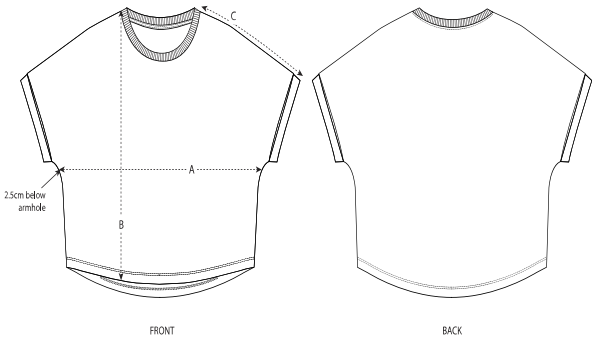
Essential Heathers



Special Heathers



Size Guide



	Sizes	XS	S	M	L	XL	XXL
A	Half Chest	58	60.5	63.5	66.5	69.5	72.5
B	Body Length	58.5	60.5	62.5	64.5	65.5	65.5
C	Sleeve Length	32.5	33	33.5	34	34.5	35

Packing

Sizes	XS	S	M	L	XL	XXL
Pieces/bag	5	5	5	5	5	5
Pieces/box	100	100	100	100	100	100