



The women's fitted t-shirt

Fitted XS > XXL 180 GSM

Details

- Set-in sleeve
- 1x1 rib at neck collar
- Inside back neck tape in self fabric
- Twin needle topstitch at sleeve cuff and hem

Composition

Shell - Loose Knit Single Jersey
100% Cotton - Organic Carded - , 180.0 GSM
Panel washed

Care

Wash similar colours together, no ironing on print, wash and iron inside out.



Country of origin

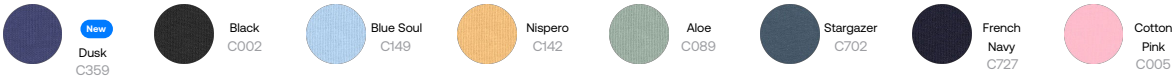
Weaving : Bangladesh
Dyeing : Bangladesh
Assembly : Bangladesh



Whites



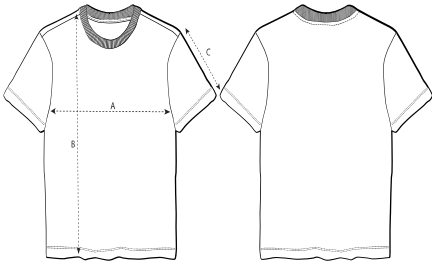
Colors



Essential Heathers



Size Guide



| Sizes | | XS | S | M | L | XL | XXL |
|-------|---------------|------|------|------|------|------|------|
| A | Half Chest | 39 | 42 | 45 | 48 | 51 | 55 |
| B | Body Length | 54.5 | 57.5 | 59.5 | 61.5 | 63.5 | 65.5 |
| C | Sleeve Length | 18 | 18.5 | 19 | 19.5 | 20 | 20.5 |

Packing

| Sizes | | XS | S | M | L | XL | XXL |
|------------|--|-----|-----|-----|-----|-----|-----|
| Pieces/bag | | 5 | 5 | 5 | 5 | 5 | 5 |
| Pieces/box | | 100 | 100 | 100 | 100 | 100 | 100 |