



Oversized

XXS → 3XL

11.8 OZ / 400.0 GSM

3-end Terry, 100% organic cotton face
Top yarn 22 Single
Pre Shrunk
Set-in sleeve
100% cotton, elastane free, 2x1 rib at neck collar, sleeve cuff and bottom hem
Herringbone back neck tape
Self fabric half moon at back neck
Twin needle topstitch centered on seam at hem, cuff and armhole
Easy tear away labels

Shell - French Terry
100% Cotton - Organic Ring Spun Combed - 11.8 OZ / 400.0 GSM
Panel washed, Dry Handfeel

Machine wash cold, do not bleach, tumble dry low, iron low heat, do not dry clean.

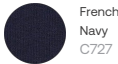
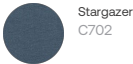
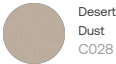


Weaving : Bangladesh
Dyeing : Bangladesh
Assembly : Bangladesh

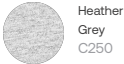
Whites



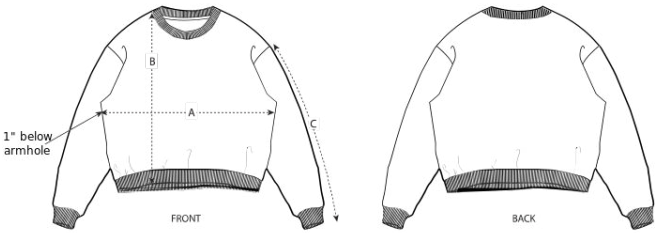
Colors



Essential Heathers



Size Guide



Measurement in inch	XXS	XS	S	M	L	XL	XXL	3XL
A - Half Chest	22	22 3/4	23 1/2	25 1/4	26 3/4	28 3/4	30 3/4	32 3/4
B - Body Length	26	26 3/4	27 1/2	28 1/4	29 1/4	30 1/4	31 1/4	32 1/4
C - Sleeve Length	23 1/4	23 1/2	24	24 3/4	25 1/2	25 3/4	26	26

Packing

Sizes	XXS	XS	S	M	L	XL	XXL	3XL
Pieces / bag	6	6	6	6	6	6	6	6
Pieces / box	12	24	24	24	24	24	24	12