



The women's zip thru hoodie sweatshirt

Medium Fit

XS → XXL

8.8 OZ / 300.0 GSM

Description

3-end Fleece, 100% organic cotton face
Top yarn 30 single
Dropped shoulders
100% cotton, elastane free, 1X1 ribs at sleeve cuff and bottom hem
Double layered hood in self fabric
Flat DTM drawcord
Embroidered eyelet
Covered metal zipper at center front
Twin needle topstitch on all seams
Inside grosgrain back neck tape
Self fabric halfmoon at back neck
Easy tear away labels

Composition

Shell - Brushed
80% Cotton - Organic Ring Spun Combed, 20% Polyester - Recycled - 8.8 OZ / 300.0 GSM
Fabric washed

Care instruction

Machine wash cold, do not bleach, tumble dry low, iron low heat, do not dry clean.



Country of origin

Weaving : Bangladesh

Whites



White
C001



Natural
Raw
C054

Colors



Black
C002



Bubble Pink
C129



Blue Ice
C728



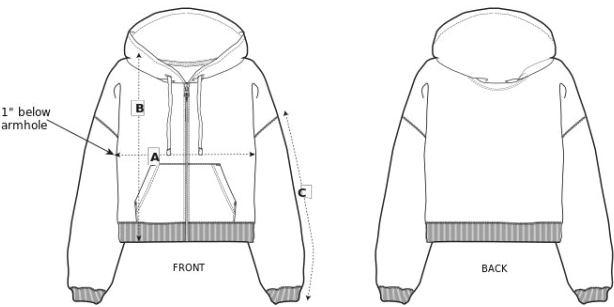
French
Navy
C727

Essential Heathers



Cool
Heather
Grey
C146

Size Guide



Measurement in inch	XS	S	M	L	XL	XXL
A - Half Chest	22 1/2	23 1/2	24 3/4	26 1/2	28 1/4	30 1/4
B - Body Length	21 3/4	22 1/2	23 1/4	24	24 3/4	25 1/2
C - Sleeve Length	18 1/4	18 1/4	18 1/4	18 1/4	18 1/4	18 1/4

Packing

Sizes	XS	S	M	L	XL	XXL
Pieces / bag	6	6	6	6	6	6
Pieces / box	18	18	18	18	18	18