



## The women's scoop neck t-shirt

Medium Fit

XS → XXL

4.6 OZ / 155.0 GSM

### Description

- 28 Single
- Set-in sleeve
- Side seamed
- Self fabric inserted neck binding
- Inside back neck tape in self fabric
- Narrow twin needle topstitch at sleeve cuff and hem
- Easy tear away labels

### Composition

Shell - Single Jersey  
100% Cotton - Organic Ring Spun Combed - 4.6 OZ / 155.0 GSM  
Fabric washed

### Care instruction

Machine wash cold, do not bleach, tumble dry low, iron low heat, do not dry clean.



### Country of origin

Weaving : Bangladesh  
Dyeing : Bangladesh  
Assembly : Bangladesh

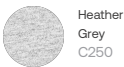
Whites



Colors



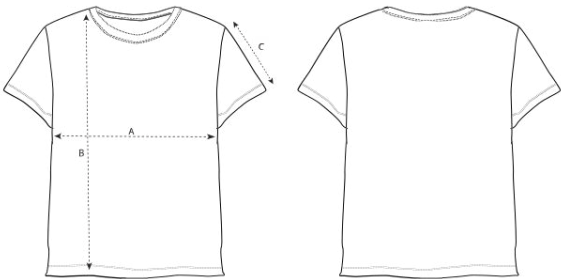
Essential Heathers



Special Heathers



Size Guide



Measurement in inch	XS	S	M	L	XL	XXL
A - Half Chest	18 1/2	19 3/4	20 3/4	22 1/2	24 1/2	26 1/2
B - Body Length	23 1/4	24 1/2	25 1/4	26	26 3/4	27 1/2
C - Sleeve Length	6 3/4	7	7	7 1/4	7 1/2	7 3/4

Packing

Sizes	XS	S	M	L	XL	XXL
Pieces / bag	6	6	6	6	6	6
Pieces / box	72	72	72	72	72	72