



ESSENTIAL
HEATHERS



MEN PADDED JACKET

STJM898 - STANLEY CLIMBER WOOL-LIKE

The wool-like men's body warmer

Fitted

- Sleeveless
- High collar
- Reverse nylon zip at center front
- Zipped welt pockets with extra grosgrain puller
- Elastic tape binding at armhole
- Fully quilted
- Side panels for better shape
- Inside seams with binding finish
- Bottom hem with adjustable plastic stopper and elastic cord

Combo options



Stella Climber Wool-Like

Shell : Plain Weave Brushed , 100% Polyester - Recycled , Fluorine-free DWR , 140 GSM

Padding : 100% Polyester - Recycled , 175 GSM

Lining : Plain Weave , 100% Polyester - Recycled , Fluorine-free DWR , 75 GSM

Printing Specifications

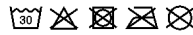
For suitable print techniques, please download our printing guide

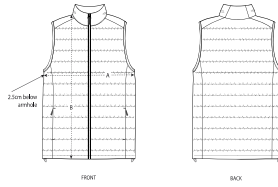
Certifications & memberships



Wash Instructions

Wash similar colours together, no ironing, wash inside out. Close all zips before washing.





SIZES		S	M	L	XL	XXL	3XL
A	Half Chest	53.5	56	59.5	63	66.5	70
B	Body Length	65	68.5	70.5	72.5	74.5	76.5

PACKING

SIZES	S	M	L	XL	XXL	3XL
PCS/BAG	5	5	5	5	5	5
PCS/BOX	10	10	10	10	10	10