

WOMEN HOODIE SWEATSHIRTS  
**STSWI48 - STELLA TRIGGER**



**COLORS**



**ESSENTIAL HEATHERS**



**The women's hoodie sweatshirt**

Medium Fit

- Raglan sleeve
- Double layered hood in self fabric
- Round drawcords in matching body colour with metal tipping
- Stitched buttonhole eyelets
- Inside herringbone back neck tape
- Self fabric half moon at back neck
- Single needle topstitch at neckline
- 1x1 rib at sleeve hem and bottom hem with twin needle topstitch
- Kangaroo pocket with wide double topstitch

Combo options



Stanley Flyer

Shell : French Terry , 85% Cotton - Organic Ring Spun Combed , 15% Polyester  
 - Recycled , Fabric washed , Light sueded , 350 GSM

Printing Specifications

For suitable print techniques, please download our printing guide

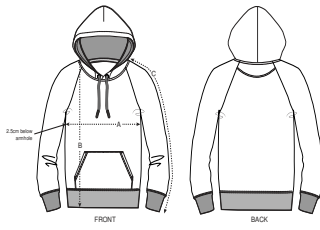
Certifications & memberships



Wash Instructions

Wash similar colours together, do not iron on print, wash and iron inside out.





SIZES		XS	S	M	L	XL	XXL
A	Half Chest	50.5	53	56	59	62	65
B	Body Length	59	61	63	65	66	67
C	Sleeve Length	69.8	71	72.5	73.8	75	76.2

Some sizes are only available on a limited number of colours. Please check our webshop for latest information

## PACKING

SIZES	XS	S	M	L	XL	XXL
PCS/BAG	5	5	5	5	5	5
PCS/BOX	20	20	20	20	20	20