



DONNA MAGLIETTE

## STTW089 - STELLA COLLIDER

### T-shirt da donna con manica arrotolata

#### Oversize

- Manica Dolman
- Collo a costine 1x1
- Fettuccia di rinforzo su interno collo nel tessuto principale
- Manica con risvolto fissato con cucitura a travetta
- Bordo inferiore arrotondato con doppia impuntura larga (retro più lungo del davanti)

Shell : Jersey , 100% cotone biologico filato e pettinato , Fabric washed , 155 GSM

#### WHITES



WHITE

#### COLORS



BLACK

BUTTER

SERENE BLUE

FRENCH NAVY

#### ESSENTIAL

#### HEATHERS



HEATHER GREY

#### SPECIAL

#### HEATHERS



HEATHER RAINBOW

#### Printing Specifications

For suitable print techniques, please download our printing guide

#### Certifications & memberships



Organic  
Certified by Control Union  
CU 919434



Stanley and Stella  
is a member of  
**FAIR WEAR**  
fairwear.org  
LEADER



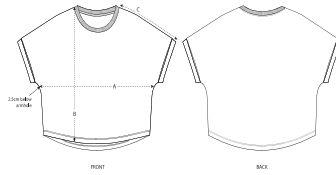
OEKO  
TEX®  
STANDARD  
100  
www.oeko-tex.com



#### Wash Instructions

Lavare con colori simili, non stirare sulla stampa, lavare e stirare al rovescio.





SIZES	XS	S	M	L	XL	XXL
A Half Chest	58	60.5	63.5	66.5	69.5	72.5
B Body Length	58.5	60.5	62.5	64.5	65.5	65.5
C Sleeve Length	32.5	33	33.5	34	34.5	35

## PACKING

SIZES	XS	S	M	L	XL	XXL
PCS/BAG	5	5	5	5	5	5
PCS/BOX	100	100	100	100	100	100