



The unisex dry handfeel and heavy weight t-shirt

Relaxed Fit	XXS → 3XL	240 GSM
-------------	-----------	---------

Description

- Set-in sleeve
- 1x1 rib at neck collar
- Inside back neck tape in self fabric
- Sleeve hem and bottom hem with wide double needle topstitch
- Slightly rougher fabric characteristic

Composition

Shell - Single Jersey
100% Cotton - Organic Open End Carded - 240.0 GSM
Fabric washed

Care instruction

Wash similar colours together, no ironing on print, wash and iron inside out.



Country of origin

Weaving : Bangladesh
Dyeing : Bangladesh
Assembly : Bangladesh

Certification information

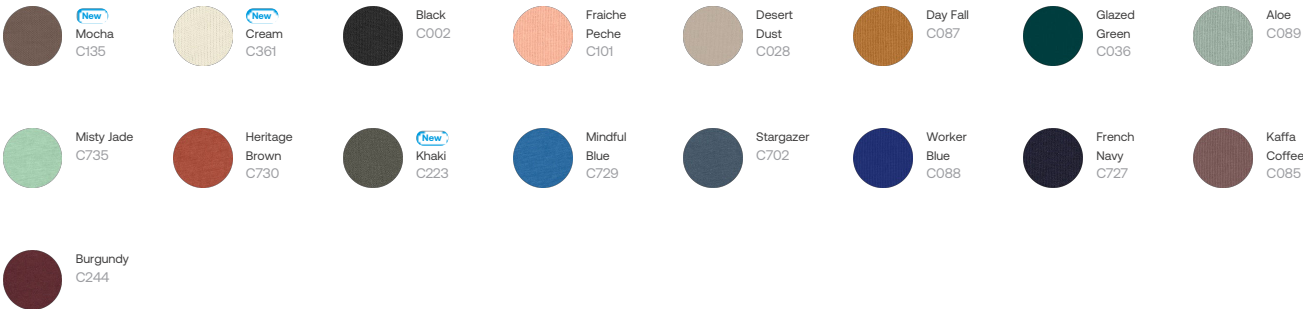
All colours are GOTS certified except for Heather Haze, which is GRS certified.



Whites



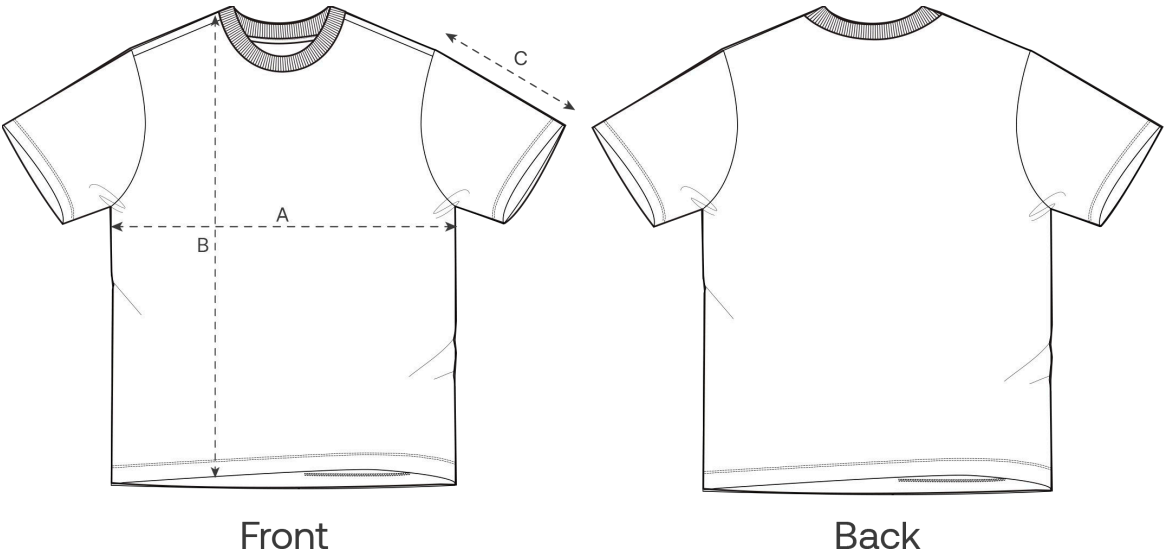
Colors



Essential Heathers



Size Guide



Measurement in cm	XXS	XS	S	M	L	XL	XXL	3XL
A - Half Chest	49.5	52	55	58	61	64	67	70
B - Body Length	68	70	73	76	78	80	82	84
C - Sleeve Length	22.5	23	24	25	26	26	27	28

Packing

Sizes	XXS	XS	S	M	L	XL	XXL	3XL
Pieces / bag	5	5	5	5	5	5	5	5
Pieces / box	50	50	50	50	50	50	50	50

Environmental impact

Please note that the table below shows data for an adult in size M.

Carbon emission in Kg CO2eq	Natural Raw	Eco-heather	Whites & Colours	Heathers*
From cradle to gate ¹	2.63	-	3.34	3.65
From cradle to grave ²	5.26	-	5.97	6.27

Water usage in m³	Natural Raw	Eco-heather	Whites & Colours	Heathers*
From cradle to gate ¹	1.01	-	1.63	1.85
From cradle to grave ²	2.73	-	3.35	3.56

1 - From the extraction of raw materials to the point it leaves the manufacturer. 2 - From the extraction of raw materials to the product end-of-life. * Except Heather Haze