

Speeder STJU834

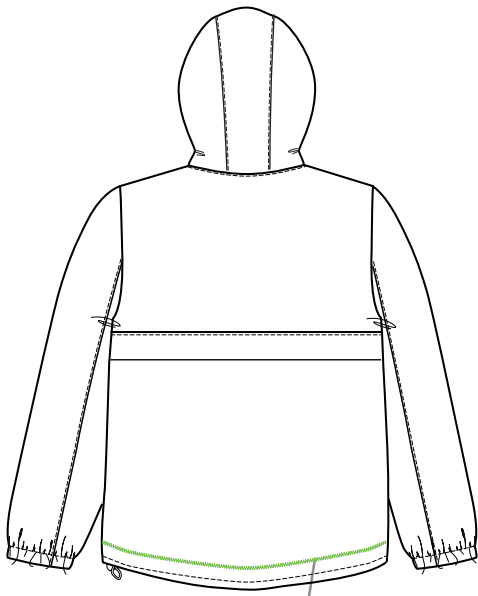
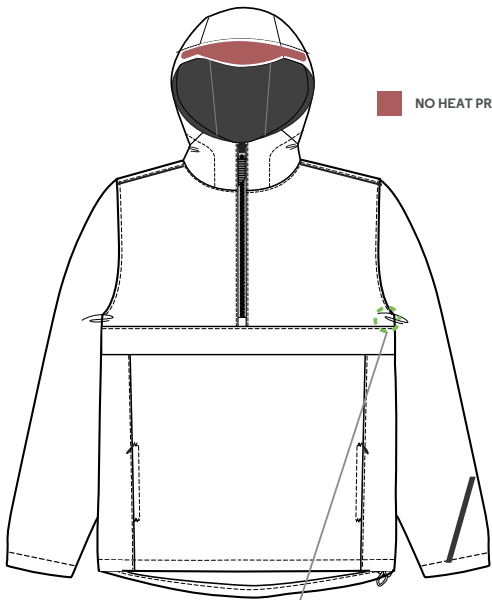
Composition

Shell - 100% recycled polyester
Fluorine-free durable water repellence
Lining - 100% recycled polyester

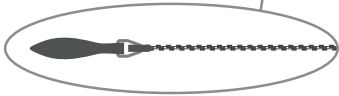
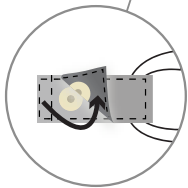
Printing guide

Screen print	● ○ ○	Waterbase / Plastisol Need special inks for low curing temperature. polyester can cause a colour migration: Blocking layer is recommended.
Discharge	○ ○ ○	Not applicable
Transfer - DTF, Flock, Flex, Screen Transfer, ...	● ● ●	Follow transfer supplier instructions. Use type of glue adequate for max 130°C. Anti-migration layer is recommended. Steam after press to limit shiny marks.
Direct To Garment	○ ○ ○	Not applicable
Embroidery	● ● ●	Direct embroidery, stitched patch, loop labels...
Sublimation	○ ○ ○	Not applicable

○ ○ ○ Not applicable ● ○ ○ Not recommended ● ● ○ Acceptable ● ● ● Excellent



Inner Strip
with opening snap button
for easy chest access
LEFT SIDE DECORATION



Large Inner Zip
for easy decoration access

→ [More information on our website](#)

STANLEY/STELLA