

CHITRAL

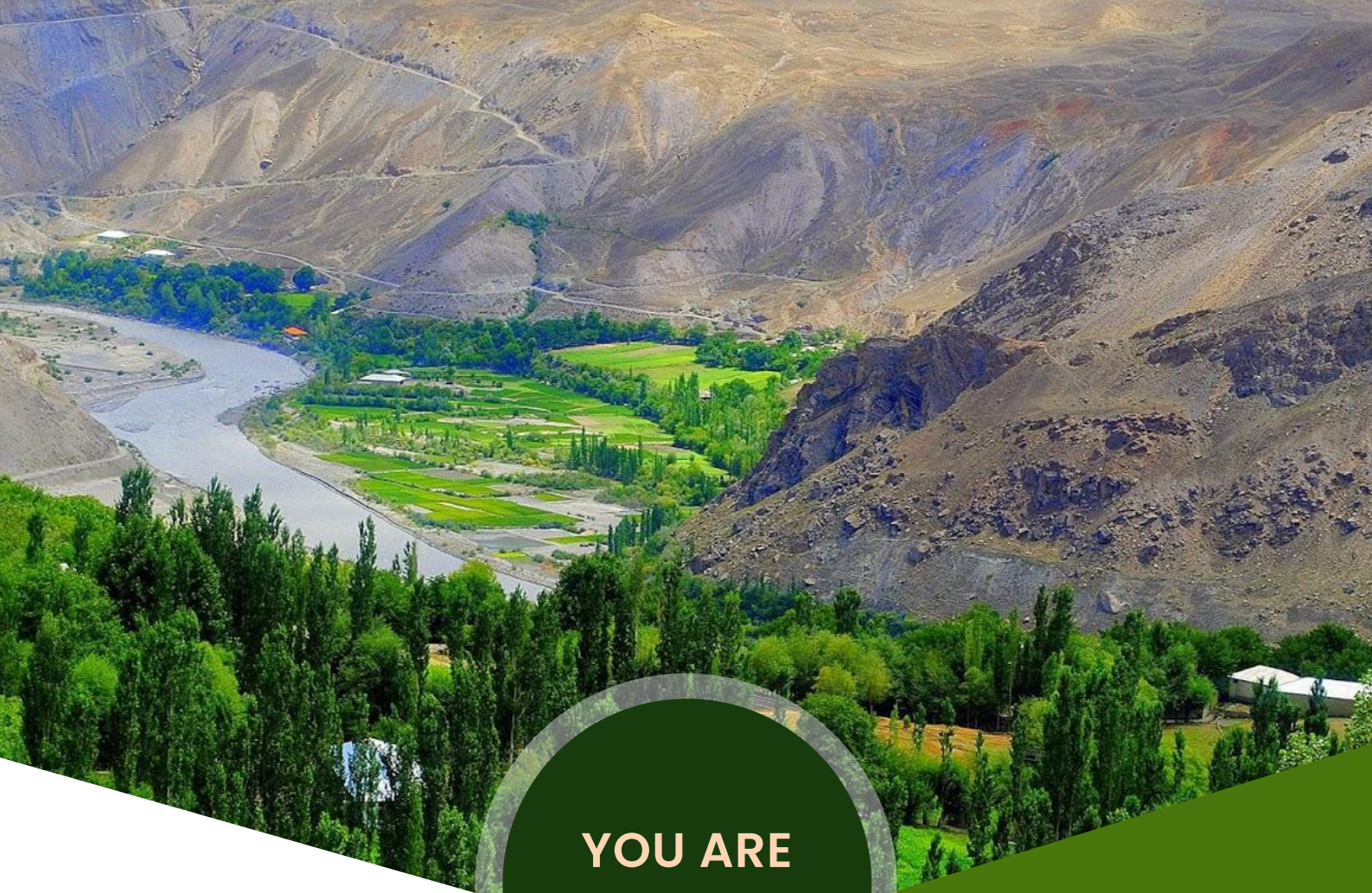
SUMMER EDITION

May - October, 2024



+92 314 5681728 | + 92 310 5660406

SCAN NOW



**YOU ARE
WELCOME**

ABOUT CHITRAL

Chitral is famous for its natural beauty, the simplicity of its residents and its unique culture. The landscape of Chitral is extremely mysterious, with its steep harsh mountains, lush green valleys, beautiful pastures and big glaciers.

Chitral is also famous because of the Kalash Valley, which is a place of Kalash people who are the descendants of Alexander the Great. Kalash Valley is a source of attraction for people all around the world. The unique culture and way of living of Kalash people make them different from the rest of the people. The following pictorial illustrations of Chitral speak louder than the words.

TRAVELPAKISTANI

Travel Pakistani is a platform that brings hosts and customers together. It is a community of explorers and creative people who want to share their passion, knowledge & experience with others.

Travelpakistani is an online marketplace where tour operators and hosts can sell their tours directly to customers. You can select from hundreds of packages or request a customized tour based on your needs and budget.

Day 1

1 Departure for Chitral

- 8:00 AM Departure from Islamabad.
- Continue travel towards Chitral via upper dir and lowari tunnel.
- Arrival at Ayun.
- Transfer to Hotel.
- Overnight stay at Ayun Fort Inn, Ayun.



Day 2

2 Explore Kalasha Culture

- 7:00 AM Breakfast & Departure for Kalash Valley.
- Exploration of Bumureet & Rambour valley & Visit to the homes of Kalash Family.
- Meetup with Kalash local community.
- Free time to explore.
- Drive back to hotel in evening.
- Overnight stay at Ayun Fort Inn, Chitral.



Day 3

3 Set to Explore Chitral Gol National Park

- 8:00 AM Breakfast.
- Visit to Shahi Moasque.
- Explore Chitral Gol National Park.
- Scenic views.
- In evening visit to Markhor sighting point.
- Overnight stay at Trichmir View Hotel, Chitral.



Day 4

4 Departure for Islamabad

- 8:00 AM Breakfast & departure for Islamabad.
- Lunch on Way.
- Drop at Islamabad.
- End of Services.



PLACES TO VISIT

Kalash Valley

Kalash valley has a tradition of being distinct from the nation's main religion, Islam, because of its geographical isolation. International and domestic tourists come to the beautiful valley not only because of its lively culture but the gorgeous mountains that surround the valley and the breath-taking panoramas one can see within the valley.



Chitral Museum:

Chitral Museum was built in 2010 and the idea to built a museum was to maintain the cultural heritage for the tourists. Chitral Museum has two section which are Archaeological & Kalash Gallery and Ethnological Gallery. You can see some notable things related to the Gods and Goddess of Chitrali people. You can also see jewelry, furniture and instruments of ancestors that was used in 12th Century.



Garam Chashma:

Garam Chashma is sometimes called "Hot Spring". Garam Chashma is famous for its breathtaking natural beauty, balmy weather and snow covered peaks. People who have skin disease should also visit Hot Spring for treatment. A local doctor of Chitral said taking bath in Hot Spring is a kind of physiotherapy. The water is very pure and refreshing. Tourists across the country come and visit this place.



Shandur National Park:

Shandur National Park is naturally designed as the small hills are on all four sides of the rectangular ground and is situated at an altitude of 12,500 feet (38000 meters) above sea level, enjoying the title of the highest polo ground of the world. It is sometimes called Roof of the World. The spectators enjoy an incredible view along with the game being played in the ground because of the surrounding landscape and Shandur Lake makes it even more beautiful.



Qaqlasht Meadows:

Qaqlasht Meadows is located about 80 kilometres north of Chitral town and approachable by a smooth drive of one and half-hour. When early spring sweeps through the valley, this Plateau type of plain transforms into a gorgeous picnic resort with a carpet grassy and tiny yellow flowers stretched miles and miles that attracts a great number of people from different parts of the district and other parts of the country.



Gol National Park:

Gol National Park was declared a wildlife sanctuary in 1979 and a National Park in 1984. This 7750-hectare area lies just west of the Town of Chitral, encompassing the watershed of Chitral Gol. Chitral Gol National Park is surrounded by high Hindukush peaks and is a habitat of a number of wildlife like Kashmir Markhor, Chakor, Ram Chakor, Pheasant and a large variety of birds and wild animals. National bird of Pakistan etc are found in Chitral Gol National Park.

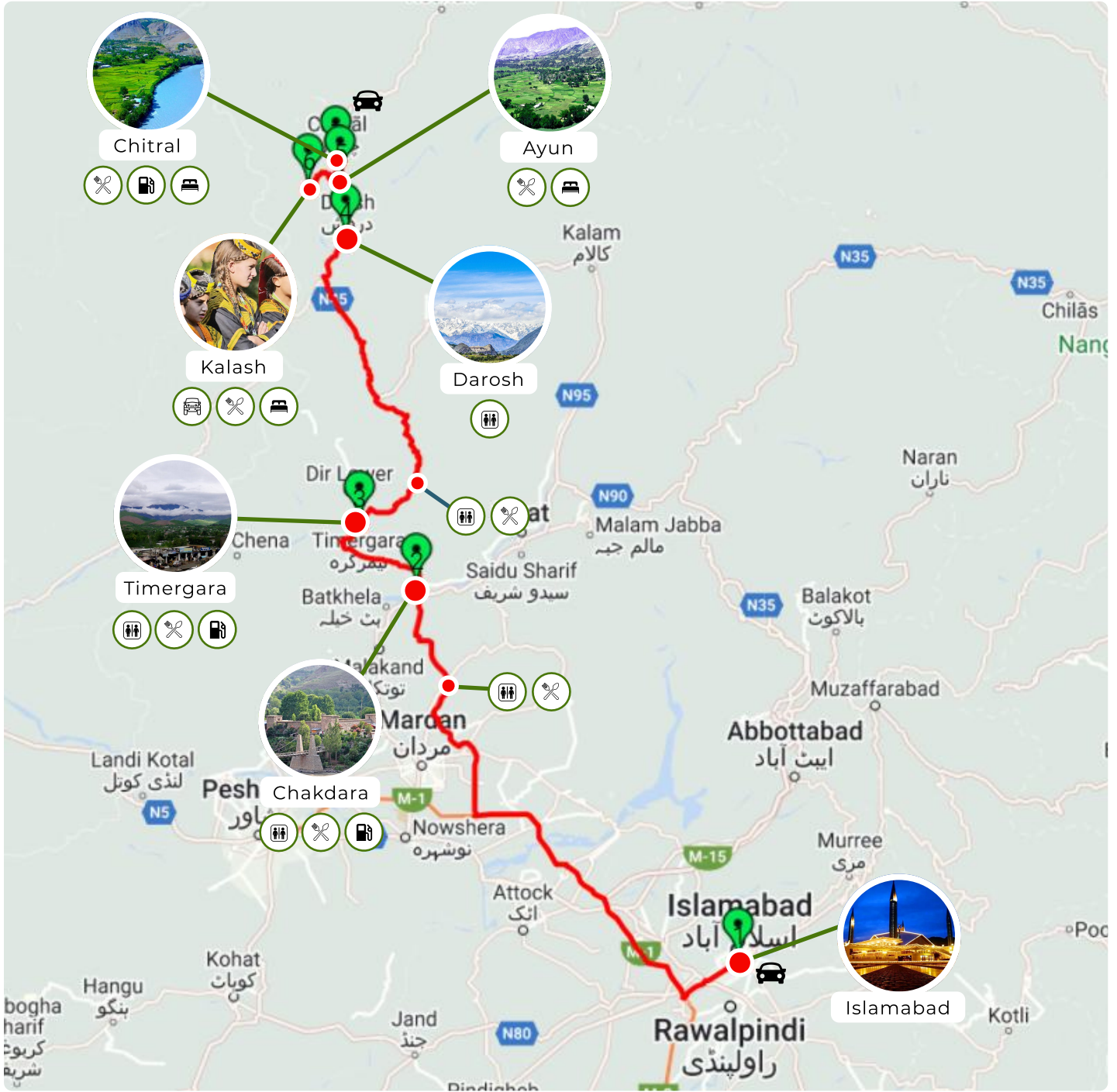


Ayun:

Ayun is a village in Chitral District, Khyber Pakhtoonkhwa Province of Pakistan, 12 km south of the town of Chitral. It is located on the Chitral River at its confluence with the Bumburet River. Mountains surround the village. The Bumburet River runs the length of the village and is harnessed to generate electricity for both Ayun and for the village of Broze. The Bumburet River also provides water for irrigation and for drinking.



ITINERARY MAP



- Washroom
- Food
- Accommodation
- Fuel
- Jeep Ride

PLACES TO VISIT

Kalash Valley

Kalash valley has a tradition of being distinct from the nation's main religion, Islam, because of its geographical isolation. International and domestic tourists come to the beautiful valley not only because of its lively culture but the gorgeous mountains that surround the valley and the breath-taking panoramas one can see within the valley.



Chitral Museum:

Chitral Museum was built in 2010 and the idea to built a museum was to maintain the cultural heritage for the tourists. Chitral Museum has two section which are Archaeological & Kalash Gallery and Ethnological Gallery. You can see some notable things related to the Gods and Goddess of Chitrali people. You can also see jewelry, furniture and instruments of ancestors that was used in 12th Century.



Garam Chashma:

Garam Chashma is sometimes called "Hot Spring". Garam Chashma is famous for its breathtaking natural beauty, balmy weather and snow covered peaks. People who have skin disease should also visit Hot Spring for treatment. A local doctor of Chitral said taking bath in Hot Spring is a kind of physiotherapy. The water is very pure and refreshing. Tourists across the country come and visit this place.



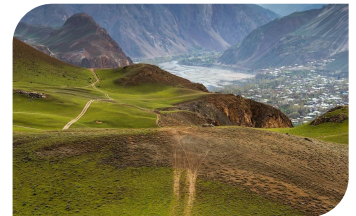
Shandur National Park:

Shandur National Park is naturally designed as the small hills are on all four sides of the rectangular ground and is situated at an altitude of 12,500 feet (38000 meters) above sea level, enjoying the title of the highest polo ground of the world. It is sometimes called Roof of the World. The spectators enjoy an incredible view along with the game being played in the ground because of the surrounding landscape and Shandur Lake makes it even more beautiful.



Qaqlasht Meadows:

Qaqlasht Meadows is located about 80 kilometres north of Chitral town and approachable by a smooth drive of one and half-hour. When early spring sweeps through the valley, this Plateau type of plain transforms into a gorgeous picnic resort with a carpet grassy and tiny yellow flowers stretched miles and miles that attracts a great number of people from different parts of the district and other parts of the country.



Gol National Park:

Gol National Park was declared a wildlife sanctuary in 1979 and a National Park in 1984. This 7750-hectare area lies just west of the Town of Chitral, encompassing the watershed of Chitral Gol. Chitral Gol National Park is surrounded by high Hindukush peaks and is a habitat of a number of wildlife like Kashmir Markhor, Chakor, Ram Chakor, Pheasant and a large variety of birds and wild animals. National bird of Pakistan etc are found in Chitral Gol National Park.



Ayun:

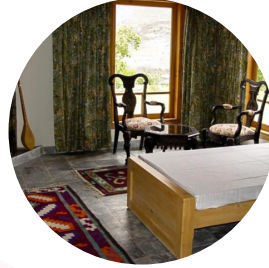
Ayun is a village in Chitral District, Khyber Pakhtoonkhwa Province of Pakistan, 12 km south of the town of Chitral. It is located on the Chitral River at its confluence with the Bumburet River. Mountains surround the village. The Bumburet River runs the length of the village and is harnessed to generate electricity for both Ayun and for the village of Broze. The Bumburet River also provides water for irrigation and for drinking.



Ayun fort inn hotel:

Ayun Fort Inn has a garden and a terrace in Darkhānāndeh. Among the facilities of this property are a restaurant, a 24-hour front desk and room service, along with free WiFi throughout the property. The resort features family rooms.

All rooms at the resort come with a seating area. Ayun Fort Inn has some rooms that feature a balcony and garden view, and the rooms come with a private bathroom and a desk. At the accommodation rooms come with bed linen and towels.



Hindukush Heights:

Hindukush Heights is precisely that; a family-run hotel that has focused on the uplift of the local community and its surroundings by taking active measures toward social responsibility and environmental sustainability. Built by a local workforce over a 5 year period, primarily using materials sourced in Chitral; those self-same local workers were then given the opportunity to be retained as service staff at the hotel. The emotional bond of these local Chitralis with Hindukush Heights has been the foundation upon which our success is based.



Roomy Hindukush Sarai:

Roomy Hindukush Sarai, Chitral in Chitral features 3-star accommodations with a terrace. Featuring a restaurant, this 3-star hotel has air-conditioned rooms with a private bathroom. The property provides a 24-hour front desk and room service for guests. All guest rooms in the hotel are equipped with a flat-screen TV and free toiletries.

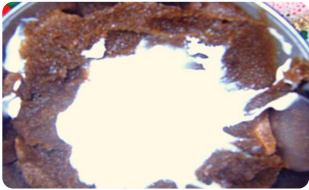


Poshoor Tikki



Poshoor Tikki is a piece of fat-rich mutton sandwich between layers of wheat dough. There is a variety of desserts that are made by mixing a small amount of special wheat flour produced from sprout wheat grain, which is also a traditional house product of Chitral. Most of the desserts are prepared with wheat flour, butter, animal fat, or walnut kernel.

Shroshrp:



A type of unsweetened halwa made from germinated wheat grain flour. The people of Chitral are passionate about their cuisines. therefore, the dishes are full of flavor and bursting with color. The cuisines of Chitral have a vast variety. However. a few of them has been mentioned above.

Rishiki:



Rishiki is a type of pancake commonly found in Chitral Pakistan. It is a bit thicker than a French crepe and comes with blackberries or a delicious cheese mixture. However, Rishiki is a very popular snack in chitrali cuisine.

Pandir:



As is the best food among the traditional dishes of Chitral. It is made up of nomadic pastoral families. So, it is popular in Lower Chitral. The people offer it for the guests. Kalash people like it as their favorite dish.

Lazhek:



It is fat-rich mutton cooked. Therefore, it is formally in large pots, with crushed wheat grain. It is nutritious, delicious, and wholesome. Similarly, it is considered as the favourite dish among the traditional dishes of Chitral.

Khesta:



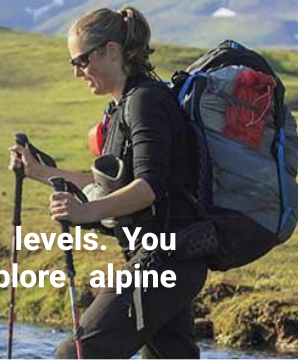
A bread made from a liquid batter. It ferments and prepared on a griddle. It has a slightly sour taste and a spongy.

Embrace The Great Outdoor

Find Your Next Adventure in CHITRAL

Hiking/Trekking

Chitral offers diverse trekking opportunities for all skill levels. You can embark on multi-day treks or day trips to explore alpine meadows, glaciers, and hidden valleys.



Rafting & Fishing

Enjoy rafting and fishing on rivers like the Kunar and Chitral Rivers. Try catching trout or have fun whitewater rafting.



Jeep Safari

In Chitral, take a thrilling jeep safari to explore Gol National Park, Qaqlashat Meadows, and Upper Chitral, crossing rough terrain and rivers for an adventurous off-road experience.



Yak safari at Broghil

Broghil Valley, a remote yet stunning area in Pakistan, offers visitors breathtaking landscapes and yak safaris in its vast meadows.



Horse Riding

Enjoy horse riding around the Shandur Polo Festival grounds to experience the stunning landscapes of Shandur Pass, with its rolling meadows and surrounding peaks.



Get in Touch



+92 314 5681728
+92 310 5660406



sales@travelpakistani.com



Rajput Arcade Office 1 & 8 2nd Floor
Pakistan Town Phase II, Islamabad

