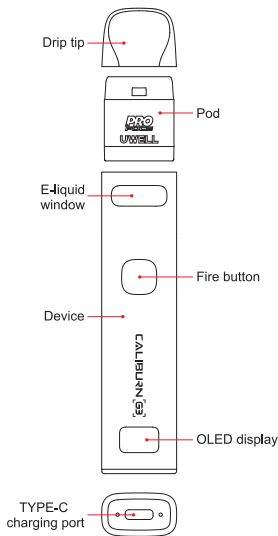


## Illustration



## Quick Guide

1. Take the pod off the device and remove the insulating film from the bottom, then insert the pod into the device.
2. Remove the drip tip and fill the e-liquid through the filling port. Put the drip tip back after the filling and let the pod sit for 10 minutes.
3. Press the fire button 5 times in 2 seconds to turn on the pod system, take a draw or press the fire button to start vaping.

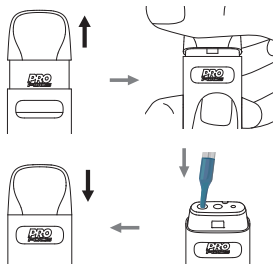
## Specifications

- Materials: PCTG, Aluminium Alloy
- Dimensions: 115.5 mm × 24 mm × 13.9 mm
- Net Weight: 47 g
- E-liquid Capacity: 2 ml
- Output Power: Maximum 25 W
- Pod Specifications:
  - FeCrAl Meshed 0,6 Ω CALIBURN G3 Refillable Pod (pre-installed)
  - FeCrAl Meshed 0,9 Ω CALIBURN G3 Refillable Pod (spare)
- Battery Capacity: 900 mAh

## Instructions

### 1. Pod filling and replacement

- a. Take the pod off the new device for the first filling, then remove the insulating film on the bottom of the pod and insert the pod into the device.
- b. Remove the drip tip from the pod.
- c. Fill the pod with e-liquid.
- d. Put the drip tip back.
- e. For pod replacement, please remove the used pod and insert a new one.

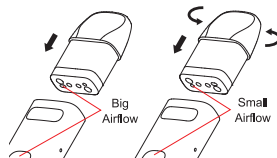


## Attention:

- a. Insert the nozzle of the e-liquid bottle into the filling port to fill the pod. Do not fill the e-liquid through the airway in the middle.
- b. Please make sure the drip nozzle is fully inserted into the filling port before the filling start.
- c. Please put the drip tip back as soon as the filling is done and make sure it is properly installed to prevent e-liquid leakage.
- d. Let the pod sit for 10 minutes after the first filling to avoid coil burning.
- e. Please make a timely refilling when the e-liquid is under the MIN level.

### 2. Airflow adjustment

Insert the pod into the device in different directions to switch between the big airflow and the small airflow.



### 3. Turn on/off

Press the fire button 5 times within 2 seconds to turn on/off the device. The display shows "UWELL" when the power is on, and the display shows "Goodbye!" when the power is off.



### 4. Standby

The device will switch to standby mode after 6 seconds without any operation.

## 5. Ignition mode switching

- a. When you turn on the device for the first time, the device will enter auto mode by default, which supports the air activation and the button activation.
- b. Press the fire button twice in 2 seconds to switch to the air activation mode and lock the button ignition function.



- c. Press the fire button twice in 2 seconds to switch to the button activation mode and lock the air ignition function.



- d. Press the fire button twice in 2 seconds to switch to the default auto mode again.



Every time you press the button twice, the ignition mode will be switched in a cycle according to the above sequence.

## 6. Power Adjustment

- a. Press the fire button 3 times continuously to enter into power adjustment mode. The power that displays on the screen will flash during the adjustment process.
- b. Press the fire button to choose a preferred power among the corresponding power range, or you can hold the fire button to adjust the power quickly, the value of the power will be displayed circularly while adjusting.

c. Wait 3 seconds or take a draw to confirm your selection, then the device will exit the power adjustment mode and the power displayed on the screen will stop flashing.



Compatible Pods	Power Range
0.6 Ω CALIBURN G3 Refillable Pod	5W - 25W
0.9 Ω CALIBURN G3 Refillable Pod	5W - 15W
1.2 Ω CALIBURN G3 Refillable Pod	5W - 11W

## 7. Vaping

Please take a draw or press the fire button to vape when the device is powered on.

## 8. Puff Records

- The device will only record puffs that last over 0.5 seconds. The puffs that last less than 0.5 seconds will not be counted.
- The largest number of records is 999, and the recorded numbers will return to 0 when exceeding 999.
- Press the button 4 times in 2 seconds to clear the recorded numbers of puffing manually.

## 9. Battery level indication

During vaping, the device will show the current battery level on the display.





Battery Level	Display on the screen
Over 80%	5 bars
60% ~ 80%	4 bars
40% ~ 60%	3 bars
20% ~ 40%	2 bars
1% ~ 20%	1 bar
Less than 1%	Low battery, the device will stop outputting.

## 10. Charging

Connect the device to a power source through a Type-C charging cable, and then the device will vibrate twice to indicate a successful connection and display the dynamic charging icon during charging. When the charging is done, the screen will turn off in 30 seconds. The device will vibrate once when disconnecting the charging cable.



## 11. Protection and indication

- Short-circuit protection: When short-circuit occurs, the screen displays "Atomizer Short", the motor vibrates 4 times, and the device will stop outputting. 
- Low voltage protection: When the power is low, the screen displays "Low Battery", the motor vibrates twice, and the device will stop outputting. 
- Overtime protection: The screen displays "OVER 8s" to indicate an over 8-second vaping. The motor vibrates twice and the device will stop outputting. 
- Open-circuit protection: When an open-circuit occurs under a no pod or disconnection situation, the screen displays "No Atomizer". The motor vibrates twice, and the device will stop outputting. 

## ATTENTION:

- Please charge with the certified power adaptor (5V/2A) and USB cable.
- Please remove the pod from the device and store it separately when you travel by air, for the air pressure change may cause leakage.
- Avoid high temperature, low temperature, flammables, explosives, water, and humid environment during the use or storage of the product. Please do not keep the product with hard objects to avoid damage. Please charge the device at least once a month.

## WARNING

The new FDA regulations apply to the sales and distribution of all E-cig products.

- Do not give away free samples.
- It is prohibited to sell all types of E-cig products to people under the age of 21.
- It is prohibited to sell all types of E-cig products in vending machines except those specified by laws and regulations.
- It is prohibited to introduce products with "light", "low", "mild", or other similar descriptions in labels or advertisements into interstate trade.
- It is strictly forbidden to be used by young children, pregnant women, and women during breastfeeding or patients with heart disease, hypertension, diabetes, depression, and asthma. Keep the product out of the reach of children, non-smokers, and animals.
- Please do not drink it.

- It may contain nicotine, which is known to be a highly addictive substance.
- Swallowing or skin contact with this product may cause intoxication.
- Please keep away from flammables and explosives when using or charging to avoid hazards.
- Do not disassemble the product. The company won't be responsible for any product damage or personal injury caused by the improper operation.
- Please consult your local vape shop or contact us through [service@myuwell.com](mailto:service@myuwell.com) if you need help using the product.

## Product Verification

- Visit UWELL's official website [www.myuwell.com](http://www.myuwell.com) to verify under the SUPPORT navigation bar.
- Please scan the QR code on the package with your phone camera to verify. The result will be displayed on the page.
- Or you can enter the 16-bit anti-counterfeit code on the surface of the user manual into the input box, and the result will be displayed within seconds.

## Attention:

Please keep your package and the warranty card.

## Warranty Period

180 days from the purchasing date.

## Warranty Parts

Device and atomizer only. Coil and pod are excluded.

## Warranty Service Excluded Conditions

- Expiration of warranty period.
- Damage caused by failure to use, maintain and keep the product according to the requirements of the product instructions.
- Damage caused by maintenance service personnel non-authorized by UWELL.
- Damage caused by using inferior accessories of other brands.
- Damage caused by the force majeure.

## Warranty Service Guide

- You can ask the shop you purchased your vaping device for the warranty service.
- You can visit [www.myuwell.com](http://www.myuwell.com) and ask for warranty service under the SUPPORT navigation bar.
- You can contact us through [service@myuwell.com](mailto:service@myuwell.com) if you have any questions.



Please use your phone camera to scan the QR code for further information.

# UWELL

©2023 BY SHENZHEN UWELL TECHNOLOGY CO., LTD.  
All Rights Reserved.