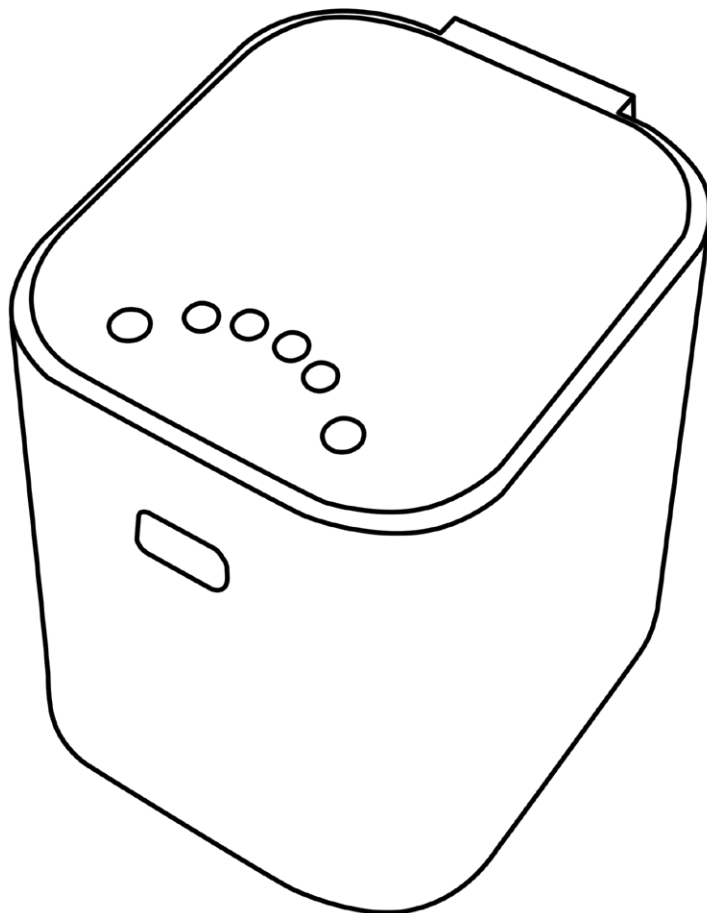


KITCHEN COMPOSTER

BY MICROGARDEN



Let's get started !

Instruction Manual

KC 300

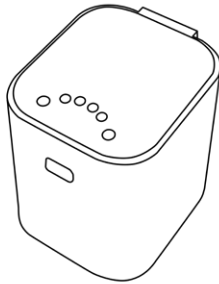
MD-11300

Important Safety Instructions

- Please read all accompanying instruction material before using your Composter.
- Ensure all electrical components (plug, cords) are kept away from water or other liquids to protect against electrical shocks.
- Close supervision is necessary when composter is used by or near children.
- Always unplug the unit when not in use or before cleaning. When adding / removing parts (such as filters or the bucket) also ensure the unit is unplugged.
- If trying to clear a jam, do not use your hands or fingers and always ensure that the composter is turned off and unplugged.
- Do not operate the composter if the cord or plug is damaged. Similarly, do not operate if the composter malfunctions or is dropped or damaged. Please contact the Microgarden support team kerry@microgarden.co.za for examination or repair.
- Do not use any attachments not recommended or sold by Microgarden as these could damage the composter or otherwise.
- This Composter is intended for household use only. Do not use the composter outdoors.
- Do not let the electric cord hang over the side of the counter or table or touch hot surfaces.
- Do not place the composter on or near a hot gas or electric burner or heated oven.
- Keep the unit out of direct sunlight and away from any appliances which produce heat.
- To disconnect the machine , turn the composter off, then remove the plug from the wall outlet.
- Ensure that the composter sits on a flat surface when in operation. To allow proper air flow, make sure to place the composter at least 15cm away from walls and in a well-ventilated space.
- Do not open the lid of the composter while it is running. Always turn off and unplug the composter before opening the lid.
- When the composter is not in use, always ensure the lid remains closed to prevent items from falling into it.
- Do not use the composter for anything other than its intended use. Do not alter or adapt the composter in any way.
- Do not lift lid while the composter is running. Heat warning – contents inside may be hot.
- Do not fill the bucket more than 75% full to avoid risk of injury or damage to the appliance.
- Do not immerse in water
- Do not touch the grinding blades when it is moving. Do not remove the bucket and touch the motor coupler when it is moving.



What's in the box?



Composter



Manual



Carbon Filter Cap

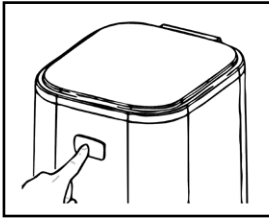


Carbon Filter

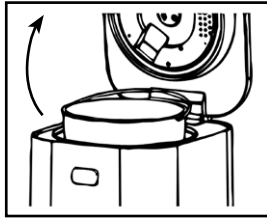


Disposal Bucket

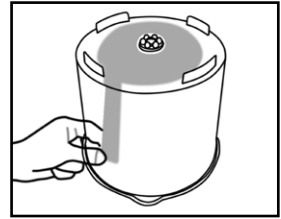
Get your composter ready!



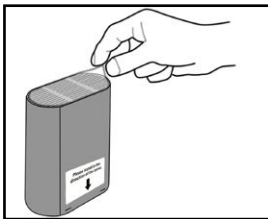
1 Press the OPEN BUTTON to open the cover



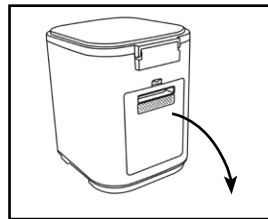
2 Take out the Disposal Bucket



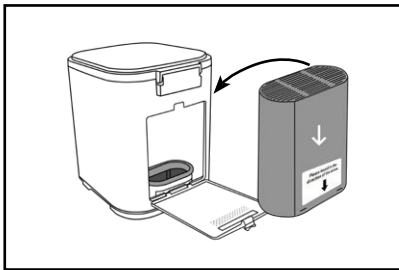
3 Remove the protective film and put the Disposal Bucket back in the composter



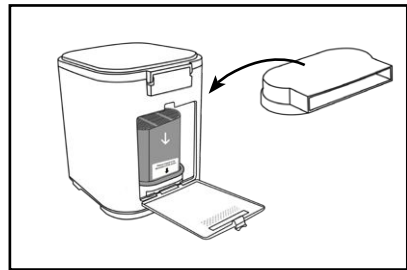
4 Remove the protective film from Carbon Filter



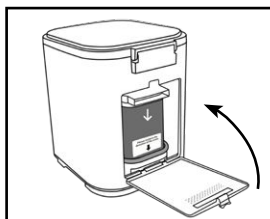
5 Open the Filter Lid



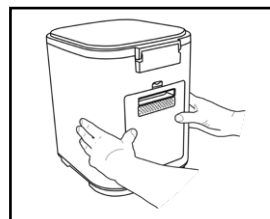
6 Insert the Carbon Filter into the Composter



7 Fit the Carbon Filter Cap on the Carbon filter



8 Close the filter lid



9 Press the sides of the lid until it is flush.

What can I put in my composter ?

Do's

- Fruit and vegetable scraps
- Food leftovers
- Plate scrapings
- Meat scraps
- Soft bones (*fish*)
- Soft shells (*egg, shrimp*)
- Coffee filters, grounds
- Tea bags
- Soft peels
- Starches (*bread, pasta, rice, potatoes, cereals, oats and other grains*)
- Dairy products (*cheese, yogurt*)
- Houseplants, plants and flowers

Don't's

- Hard bones (*chicken, beef, pork, lamb*)
- Cooking oils, grease, liquids
- Fruit pits (*avocados, peaches, apricots, nectarines, mango*)
- Lined bags (*chips, cookie, pet food*)
- Soiled diapers, baby wipes
- Cigarettes
- Metal, plastic, glass
- Foil wrap
- Alcohol
- Produce netting
- Styrofoam
- Pet waste
- Pineapple head

NOTE: Make sure to cut up rigid stems/ fibrous vegetables (e.g.: flower stems, broccoli stems, kale stems etc.) so that they don't get stuck during grinding. If the bucket appears to be damaged from the addition of any of the items listed on the don't column, warranty is void. See **page 6** for recommendations.



We recommend the following

Cut up Prior

+ - 10 cm



Corn cobs & husk



Fibrous herbs
(i.e. parsley & coriander)



Fibrous vegetables
(i.e. asparagus & celery)



Large fruit seeds
and peels



Dead plants/flower
stems and tougher
weeds

In Moderation



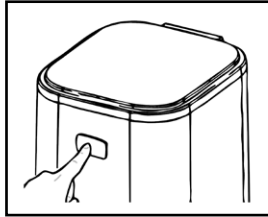
Starches
(i.e. rice, bread, pasta, noodles,
cereals, grains...)



Whole fruits or a high ratio of
sugar-rich fruits.



Let's get started

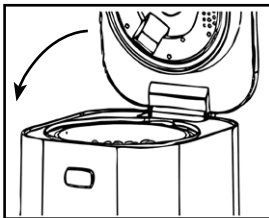


① Press the OPEN BUTTON to open the cover

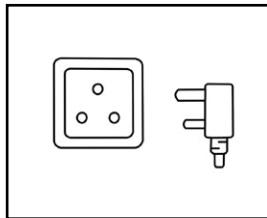


② Add waste to the bucket

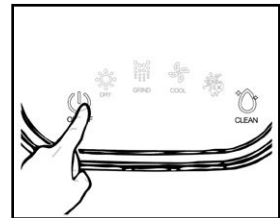
- Waste must fit into the bucket without using force.
- Cut waste into **smaller pieces** if necessary.
- Fill the bucket to a max of **75% full**.
- *Do not fill all the way to the rim of the bucket.*



③ Close the lid



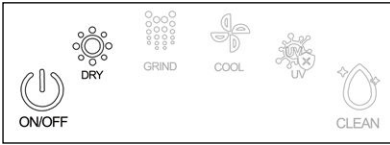
④ Safely Connect the Composter



⑤ Start a cycle by touching the ON/OFF button for **2 seconds**.

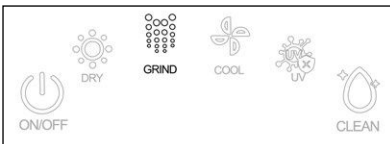
Normal Process

Phase 1



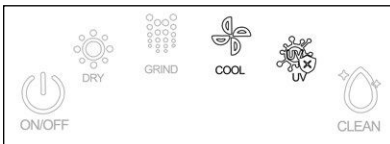
Drying Mode. During this cycle the food waste is heated. The blade will rotate periodically.

Phase 2



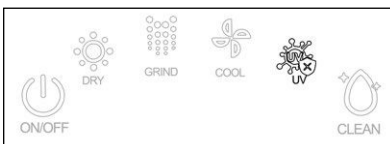
Drying / Grind Mode. During this cycle the heating of the food waste is continued . The blade will rotate at full speed.This Process will last for about 1.5.hours

Phase 3



Cooling & UV-C Mode. The food waste is now dry and the process of cooling and sterilisation starts.

Phase 4



Storage Mode. The food waste is now ready to be used as a pre compost . Turn off and unplug the composter. The unit will sterilise from time to time until unplugged or reset.

How to care for your Composter

Cleaning your composter:

- To keep your composter at optimal performance, clean routinely.
- Ensure your composter is unplugged before cleaning.
- To wash the exterior of the composter simply wipe with a damp dish cloth. If your composter is particularly dirty, add a small amount of dish soap to your cleaning process.
- Finally use a dry cloth to remove excess moisture.
- Never submerge your composter under water. There are electrical components, and any excess water would cause significant damage and could cause electric shock.

Cleaning your bucket:

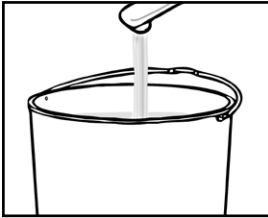
- The bucket can be easily removed and washed by hand or placed in the dishwasher, for more thorough cleaning.
- Ensure the bucket is free from any excess dirt/particles before placing in the dishwasher
- If placing in the dishwasher it should run on a hot cycle.
- As the bucket is made from steel , be sure to let it cool down before handling and placing it back inside the composter unit.

Smart Self-Cleaning mode:

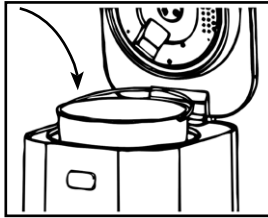
The Composter comes with a Smart Self-Cleaning Mode.
See instruction on **page 10**



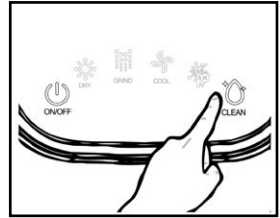
The Smart Self-Cleaning Mode



① Pour water into the bucket not more than 75% full

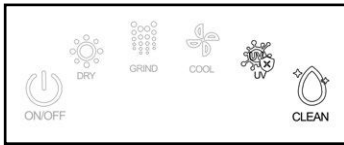


② Put the bucket back into the composter



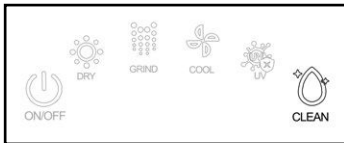
② Activate the Smart Self-Cleaning cycle

Phase 1



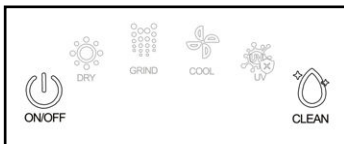
UV-C Mode. During this cycle sterilisation starts and will last for 30 min

Phase 2



Cleaning Mode. During this cycle the water will be heated for 30 min.

Phase 3

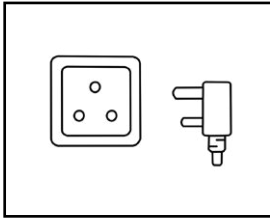


Storage Mode. The cycle is now finished and the water can be carefully disposed off.

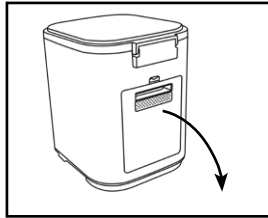


Replacing the Activated Carbon Filter

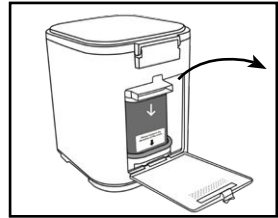
It is recommended that the Activated Carbon Filter is replaced every **2 months** with regular usage .



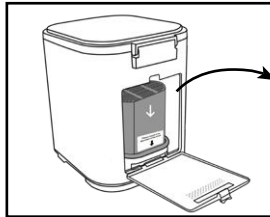
1 Safely Disconnect the Composter



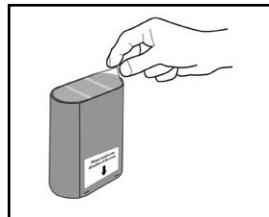
2 Open the Filter Lid



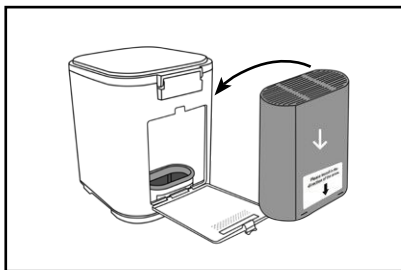
3 Remove the Filter Cap from the Carbon Filter



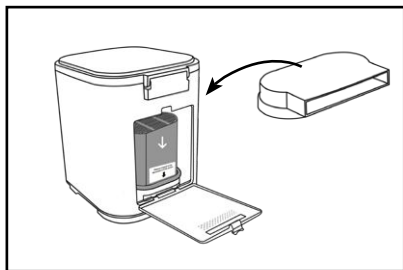
4 Remove the Carbon Filter from the Composter



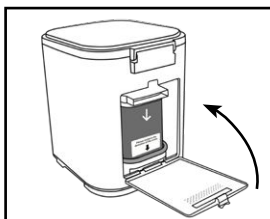
5 Remove the protective film from the New Carbon Filter



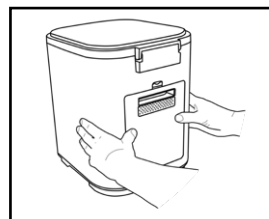
6 Insert the Carbon Filter into the Composter. Right side up !



7 Fit the Carbon Filter Cap on the Carbon filter



8 Close the filter lid



9 Press the sides of the lid until it is flush.



How to feed your garden with what comes out of the Composter.

- If you have a **compost heap** at home you can throw the pre-compost directly onto the heap – The pre-compost has no odour and does not attract unwanted animals. If mold occurs this is a good sign that decomposition is underway , the mold will disappear after a few days.
- If you have a **worm farm** – give it to your worms – ours LOVE it!
- Feed your **garden**. Sprinkle pre-compost amongst your shrubs – 1 bucket pre-compost to 3-5 square meters of garden .DO NOT PUT PRE-COMPOST on your grass.
- If you **don't have a garden**, you can store your pre-compost in a bin (odour free) When full drop off at your local composting site or municipal garden waste facility.
- Look for your closest drop off facility below.

Sustainable Seas Trust (SST) has a map of over 3000 recycle places in South Africa.

<https://sst.org.za/>

https://sstafrika.org.za/my_map/index_waste_recycle.html



Tips for Performance

1. Have an even mix of light and heavy food scraps interspersed.
2. Do not leave your unprocessed waste for a long period of time (over a week). Run a smaller cycle if necessary.
3. Avoid large amounts of dense or moisture-rich composition foods such as condiments and high sugar fruits.



Troubleshooting

What should I do if.....

My compost is too wet?

- Drain liquid from waste before placing it in the bucket
- Add dry waste – grains, bread etc.

My composter is producing bad odors?

- Replace Activated Carbon Filter.
- Check for old waste build up
- Don't let waste sit for too long

My Composter is taking too long?

- Listen for if the grinder is moving or if the fan is on. If not, there may be a jam.
- Unplug composter, open the lid and remove the waste causing the jam
- Close the lid and restart the cycle

I can't close the lid !

- Make sure the bucket is inserted correctly. The cogs on the bottom of the bucket need to slot into the drive shaft of the composter.



Frequently Asked Questions FAQ

If I open the lid or the composter stops or is unplugged in the middle of running, is it hot? What do I do to start it up again?

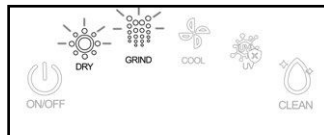
Bucket and contents will be hot CAUTION DO NOT TOUCH! There may be some steam so STAND BACK. To restart, close the lid and press ON. It starts the whole cycle again but will still process the waste. The cycle might take a shorter time with half processed waste. Composter will not start again if contents are too hot, you might need to allow for the composter to cool for 10 min before starting again.

Can I run a half load? How full is the minimum and maximum?

You can run a load as small as you want. The composter will run with low content capacity, however, the cycle may complete faster .DO NOT RUN EMPTY. Do not fill the bucket more than 75% full..

What does it mean if the “Dry” and “Grind” buttons flash?

Blade is jammed from pieces of food that are too big, long fibers in food or too much food in the bucket.



YOU WILL NEED TO CLEAR THE ERROR - Turn the composter off, unplug the composter . Carefully remove the food that is causing the jam.

CAUTION Contents **might be hot.**

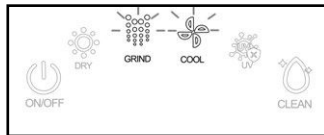
Once removed close lid, plug in composter, once the composter has sufficiently cooled you can start a cycle once again.

Frequently Asked Questions FAQ

What does it mean if the “Grind” and “Cooling” buttons flash?

The process was interrupted by opening the bucket or by the power being cut off.

When trying to restart The “Grind” and Cooling” buttons will flash. You can not reset this error . To reset the content needs to cool down .When the content is at room temperture you can start the process again.



Can my composter sit with unprocessed waste for a few days while I fill it? Will it smell?

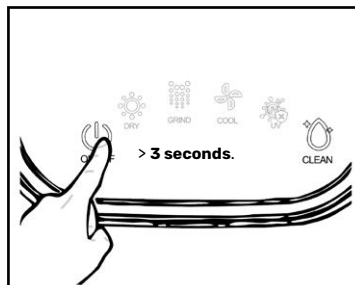
A few days are ok. We do not recommend leaving waste for longer than a week. Filter odour control is not active while the composter is not running, so you might smell it. We recommend running a smaller cycle if you can so that you are not leaving waste in there for too long.

What does it mean if the ON/OFF and UV light flash?

The full cycle is finished and the machine is now in Storage Mode , this mode makes sure the contents of the bucket stay hygienic; it will run the UV light very 15 min (using minimal energy) till you open the lid.

What do I do if I accidentally start a cycle?

Either immediately open the lid as this should stop the cycle OR reset by holding down the ON/OFF button as below for more then **> 3 Seconds.**



Product Specifications

Product Name:	Food Waste Composter
Model	KC300 /MD-11300
Processing Cycles	Drying, Mixing, Cooling
Input	220V-240V – 50 Hz
Wattage	550 W
Energy Usage per Cycle	2.75 Kw
Capacity	3 L
Colour	White / Dark Grey
Warranty	1 year -see full policy
Dimensions out of the box	H36 x L28 x W33 cm
Noise level	60 Decibels
Nett Weight	9.8 kg
Usage	Indoor Usage Only

Safety Standards:

IEC 60335-1 TEST REPORT / DL-20220827006S 2022

Online Help

You can read our online help manual , tips and FAQ online by scanning QR code below ?



<https://microgarden.co.za/kitchen-composter-instructions/>

Warranty

You can read the terms, effect and limitation of our warranty below by scanning QR code below ?



<https://microgarden.co.za/kitchen-composter-warranty/>

Registration of your warranty

You can read register you warranty by scanning QR code below ?



<https://microgarden.co.za/kitchen-composter-register-warranty/>